

Link to the product: <https://stair-lighting.com/wl-433-milight-433mhz-gateway-p-2317.html>

## WL-433 - MILIGHT - 433MHz Gateway

Price	<b>41.14 Euro</b>
Availability	<b>Available</b>
Shipping time	<b>42 days</b>
Number	<b>2317</b>
Manufacturer	<b>Mi.Light</b>

### Product description

Product Name: 433MHz Gateway  
Model No.: WL-433  
Input: DC5V/500mA ( 5.5\*2.1mm)  
Working Temperature: -20~60°C  
Communication Mode: WiFi-IEEE 802.11 b/g/n 2.4GHz  
Input Signal: DMX512(1990)  
RF: 433MHz ( Transmitting Power: 15dBm)  
Modulation Method: LoRa spread spectrum  
Control Distance: 50m (Lamps into 0.5m under freshwater)  
Control Distance: 1000m (Lamps on the open area)

# 433MHz Gateway

- Control MiBoxer 433MHz series products
- Smart phone App control
- Support DMX512(1990) control
- Support third party voice control



WORKS WITH  
amazon alexa



works with the  
Google Assistant



## Compatible with MiBoxer 433MHz series products



# Support Third Party Voice Control

Adjust ON/OFF, brightness, color temperature and change light colors through voice command



# Smart Phone APP Control at any time and place

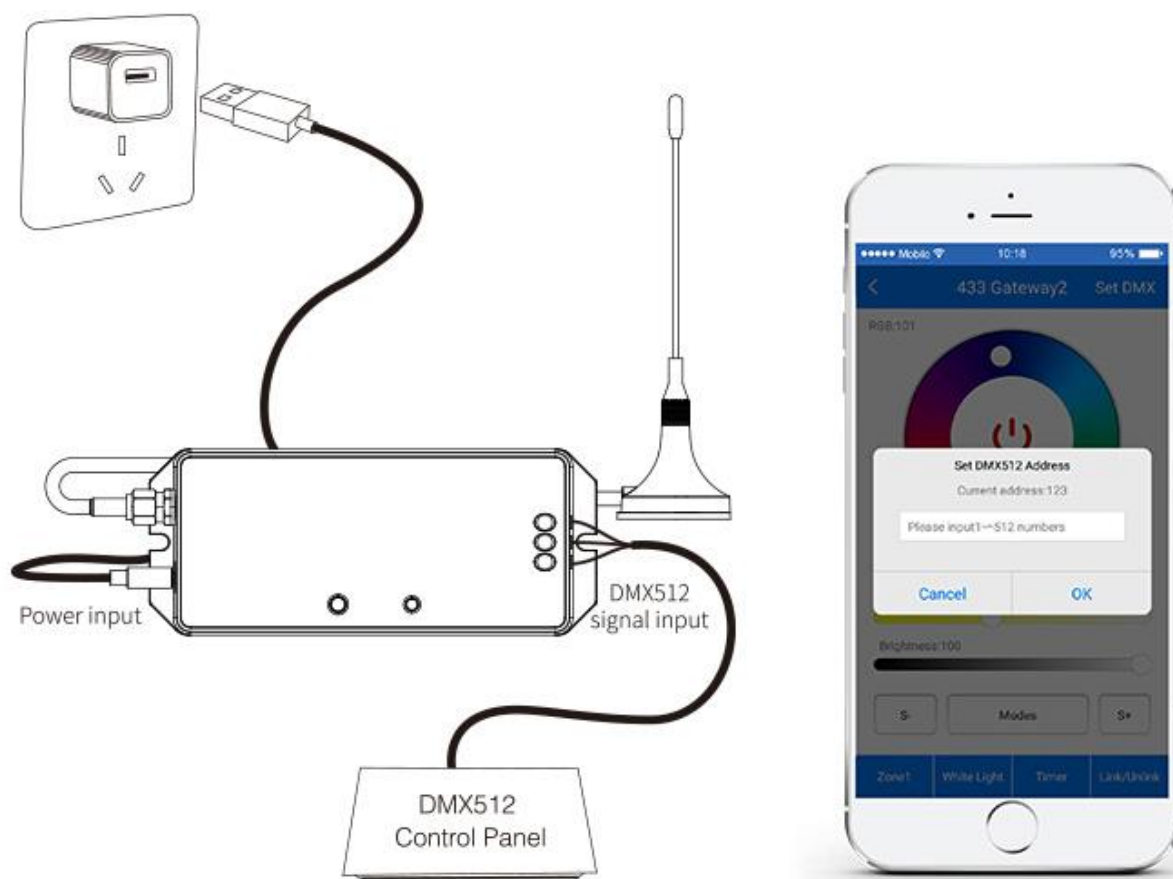
3G/4G controlling by Smart Phone at any time and place





# Support DMX512(1990) control

Set DMX512 address for gateway on Popup window via Smart Phone APP

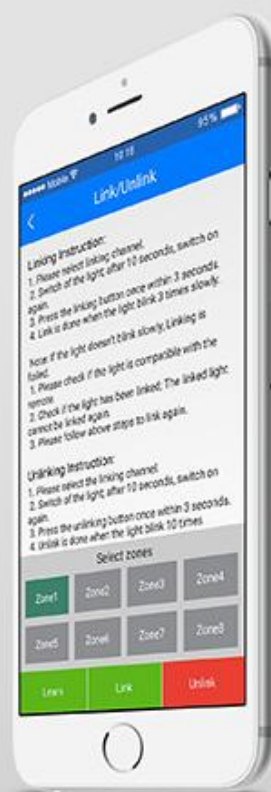
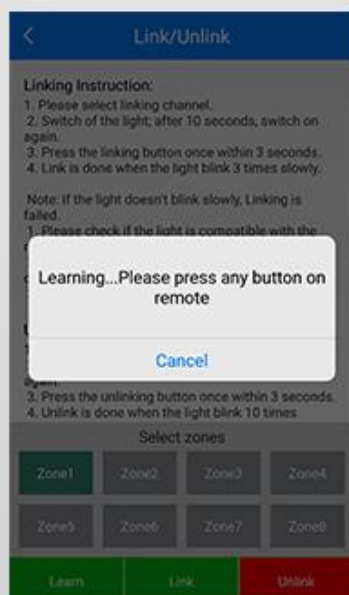




## Learning function; easy operation

Gateway copy the remote ID to fulfill the gateway and remote ID no difference;  
after linking with remote, the gateway can control the lamps directly without linking again.

- [1. click "Learn" button, device indicating lamp blinking.
2. within 10 seconds, click any button on the remote, APP will hint learning successfully. ]





## Timer Function

Setting the ON and OFF time as per your lifestyle; Enjoy your life easily





# 433MHz Gateway

- Control MiBoxer 433MHz series products
- Smart phone App control
- Support DMX512(1990) control
- Support third party voice control



WORKS WITH  
amazon alexa



works with the  
Google Assistant

