

Link to the product: <https://stair-lighting.com/profile-tapo-p-2473.html>

## Profile TAPO

Price	<b>5.41 Euro</b>
Availability	<b>Available</b>
Shipping time	<b>4 days</b>
Number	<b>2473</b>
Manufacturer	<b>KLUS</b>

### Product description

#### Important Information

The purchase a piece in the store means the purchase 1 linear meter of the profile or cover

If you want to buy a profile that has a length of 2 meters you have to buy 2 pieces, 3 meters you have to buy 3 pieces, and the multitude of quantity when ordering.

The total length of the aluminum profile or the panel to the profile - is the total quantity of the piece number that was bought in the store.

The choice of the appropriate shipping method will take place at the end of the order process.

[The details of the shipping method and packaging of the aluminum profiles you will find here \(click in the link\)](#)

The product you have selected contains only - aluminum profile - does not include the accessories located in the Accessories tab.

Additional accessories like covers, end caps, electricity conductive end cap, mounting bracket, fasteners, mounting springs, proximity switch, micro switch, mounting system and others are available under "Accessories".

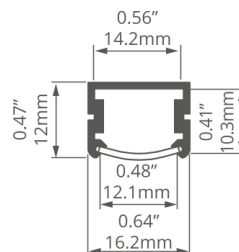
If you are interested in longer lengths than one meter, write to us we will quote the delivery cost to you. Transport companies expect additional charges for long shipments.

For each country is different maximum length of the profile that we can send. It does not depend on us only by courier. We also do service cutting aluminum profiles to the indicated size - write or call get comprehensive information.

Profile uniwersalne do montażu na powierzchni, wbudowania lub podwieszenia /  
Universalprofile zur Aufputz, Unterputzmontage oder zum Abhängen

## TAPO

REF. C1919



Ekonomiczna zaślepka z PP.  
Ekonomiczna osłona „T” o uproszczonej konstrukcji.  
Minimalny gabaryt dla pasków 14 mm.

#### PRZEZNACZENIE PRODUKTU:

- do budowy ekonomicznych opraw o podstawowych parametrach.

#### MONTAŻ:

- za pośrednictwem mocowników z oferty .

#### DODATKOWE INFORMACJE:

- dla uzyskania w pełni rozświetlonej osłony (bez cieni przy zaślepkach), zaleca się stosowanie pasków LED o maksymalnej szerokości 10 mm.



Wirtschaftliche Endkappe aus PP.  
Wirtschaftliche T-Abdeckung mit vereinfachtem Design.  
Mindestabmessungen für 14 mm Streifen.

#### ANWENDUNG

- Zum Aufbau wirtschaftlicher Leuchten mit Basisparametern

#### MONTAGE

- Mit Befestigungsclips von

#### ZUSÄTZLICHE INFORMATIONEN

- Für eine vollständig beleuchtete Abdeckung (ohne Schatten an den Endkappen) verwenden Sie LED-Streifen mit einer maximalen Breite von 10 mm.

#### profil / Profil

długość / Länge	szerokość LED / LED-Breite	wykończenie powierzchni / Oberfläche	numer artykułu / Artikelnummer
1 m	14 mm	● Srebrny anodowany / Silber eloxiert	<b>C1919ANODA_1</b>
2 m			<b>C1919ANODA_2</b>

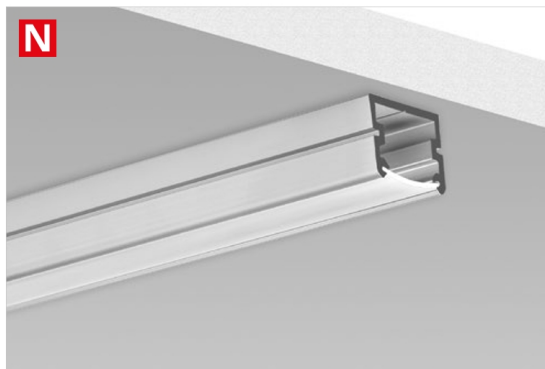
#### akcesoria / Zubehör

osłony mleczne / opale Abdeckungen	zestawy mocowań / Befestigungssätze	sprężyny mocujące / Befestigungsfedern	inne akcesoria / sonstiges Zubehör
T <b>17004</b>	M3 <b>42303</b>	PDS <b>00800</b>	DŁAWNICA 8.8X1.2 / KA- BELVERSCHRAU- BUNG 8.8X1.2 <b>00802</b>
zaślepki białe / weisse Endkappen	M4 <b>42301</b>	zawieszki / Befestigungen	
TAPO <b>20055</b>	M5 <b>42302</b>	DP-MOC <b>00645</b>	
mocowniki / Befestigungsclips	M13 <b>42611</b>	DP-MOC-ZO <b>00646</b>	
PDS <b>24189</b>	M14 <b>42612</b>		
PDS <b>24223</b>	W9 <b>42607</b>	głowice / Köpfe	
PDS-STN <b>24190</b>	W10 <b>42608</b>	ST <b>42216</b>	
	RG-1 <b>42647</b>	ZO <b>42217</b>	
	RG-1 <b>42648</b>	ZZ <b>42218</b>	

Universal Extrusions for surface mount, recessed or suspended applications /  
Perfiles universales para aplicaciones de montaje en superficie, empotradas o suspendidas

## TAPO

REF. C1919



Economical end cap made of PP.  
Economical T-cover with a simplified design.  
Minimum dimensions for 0.55" / 14 mm LED strips.

### APPLICATION

- for the construction of economic lighting fixtures with basic parameters.

### ASSEMBLY

- using the PDS/MICRO, PL-PDM, REG-PD mounting brackets with appropriate mounting adhesives or professional double-sided adhesive tapes.

### ADDITIONAL INFORMATION

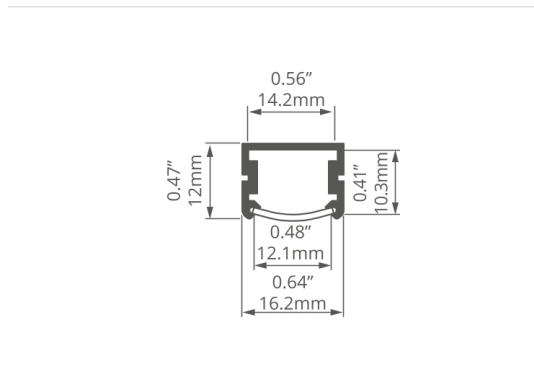
- To obtain a fully lit cover (without shadows at the end caps), it is recommended to use LED strips with a maximum width of 0.39" / 10 mm.

### extrusion / perfil

length / longitud	space for LED strip / espacio para tira de LED	surface finish / terminado de superficie	reference number / número de artículo
39.4" / 1 m	0.55" / 14 mm	● Silver anodized / Ánodo de plata	<b>C1919ANODA_1</b>
78.7" / 2 m			<b>C1919ANODA_2</b>

### accessories / accesorios

frosted covers / difusores escarchados	mounting sets / sets de montaje	mounting springs / resortes de montaje	other accessories / otros accesorios
T <b>17004</b>	M3 <b>42303</b>	PDS <b>00800</b>	8,8x1,2 GLAND / GLÁNDULA <b>00802</b>
white end caps / tapas finales blanco	M4 <b>42301</b>	fasteners / soportes	
TAPO <b>20055</b>	M5 <b>42302</b>	DP-MOC <b>00645</b>	
mounting brackets / soporte de montaje	M13 <b>42611</b>	DP-MOC-ZO <b>00646</b>	
PDS <b>24189</b>	M14 <b>42612</b>	heads / cabezales	
PDS <b>24223</b>	W9 <b>42607</b>	ST <b>42216</b>	
PDS-STN <b>24190</b>	W10 <b>42608</b>	ZO <b>42217</b>	
	RG-1 <b>42647</b>	ZZ <b>42218</b>	
	RG-1 <b>42648</b>		



Tapa final económica de PP.  
Difusor "T" económico de estructura sencilla.  
Tamaño mínimo para tiras de LED 0.55" / 14 mm.

### APLICACIÓN

- para crear luminarias económicas con parámetros básicos.

### MONTAJE

- utilizando los soportes de montaje PDS / MICRO, PL-PDM, REG-PD con adhesivos de montaje adecuados o cintas adhesivas profesionales de doble cara.

### INFORMACIÓN ADICIONAL

- para obtener un difusor totalmente iluminado (sin sombras junto a las tapas finales), se recomienda usar tiras de LED con un ancho máximo de 0.39" / 10 mm.

- Minimum dimensions for 14 mm strips
- Economical end cap made of PP
- Economical T-cover with a simplified design

**Application**

- for the construction of economic lighting fixtures with basic parameters

**Assembly**

- with mounting brackets from our offer

**Additional information**

- to obtain a fully illuminated cover (without shadows at the end caps), it is recommended to use LED strips with a maximum width of 10 mm



