

Link to the product: <https://stair-lighting.com/profile-led-por-to-the-handrail-and-balustrade-p-1112.html>



Profile LED POR - to the handrail and balustrade

Price	8.88 Euro
Availability	Available
Shipping time	4 days
Number	1112
Manufacturer	KLUS

Product description

Important Information

The purchase a piece in the store means the purchase 1 linear meter of the profile or cover

If you want to buy a profile that has a length of 2 meters you have to buy 2 pieces, 3 meters you have to buy 3 pieces, and the multitude of quantity when ordering.

The total length of the aluminum profile or the panel to the profile - is the total quantity of the piece number that was bought in the store.

The choice of the appropriate shipping method will take place at the end of the order process.

[The details of the shipping method and packaging of the aluminum profiles you will find here \(click in the link\)](#)

The product you have selected contains only - aluminum profile - does not include the accessories located in the Accessories tab.

Additional accessories like covers, end caps, electricity conductive end cap, mounting bracket, fasteners, mounting springs, proximity switch, micro switch, mounting system and others are available under "Accessories".

If you are interested in longer lengths than one meter, write to us we will quote the delivery cost to you. Transport companies expect additional charges for long shipments.

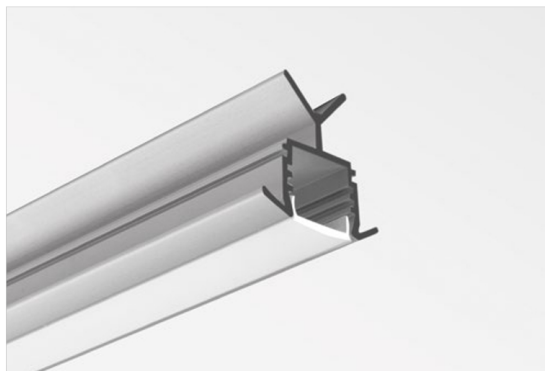
For each country is different maximum length of the profile that we can send. It does not depend on us only by courier.

We also do service cutting aluminum profiles to the indicated size - write or call get comprehensive information.

Profile do oświetlenia poręczy, schodów, korytarzy, ciągów pieszych /
Profile zur Beleuchtung von Geländern, Treppen, Fluren und Bereichen des Fußverkehrs

POR

REF. B6144



Współpracuje z szerokim zakresem średnic poręczy rurowych.

Podświetlenie osadzone w poręczy schodów.

Łatwość montażu i demontażu „na klik”.

PRZEZNACZENIE PRODUKTU:

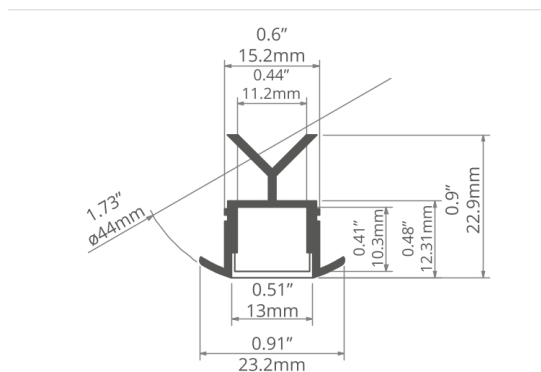
- montaż oświetlenia w rurach stalowych.

MONTAŻ:

- za pomocą dedykowanych zatrzasków, osadzanych wewnątrz poręczy.

DODATKOWE INFORMACJE:

- dwa różne zatrzaski pozwalają mocować profil w poręczach o średnicy wewnętrznej od 42 mm do 49 mm,
- możliwość uszczelnienia profilu do klasy IP67.



Mit Rohrhandläufen mit verschiedenen Durchmessern verwendbar.

Beleuchtung im Treppengeländer.

Einfache Montage und Demontage durch Einrasten.

ANWENDUNG

- Montage der Beleuchtung in Stahlrohren

MONTAGE

- mit speziellen Einrastern, befestigt im Geländer

ZUSÄTZLICHE INFORMATIONEN

- mit zwei Arten von Einrastern kann das Profil in Geländern
- mit dem Innendurchmesser von 42 mm bis 49 mm befestigt werden das Profil kann bis zur Schutzart IP67 abgedichtet werden

profil / Profil

długość / Länge	szerokość LED / LED-Breite	wykończenie powierzchni / Oberfläche	numer artykułu / Artikelnummer
1 m	11 mm	● Srebrny anodowany / Silber eloxiert	B6144ANODA_1.05
2 m			B6144ANODA_2.10

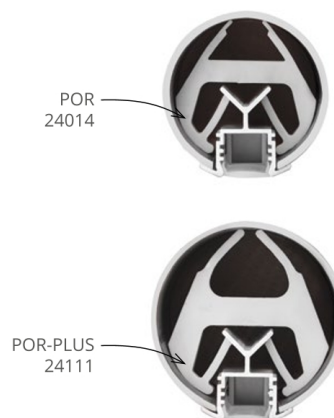
akcesoria / Zubehör

osłony mleczne / opale Abdeckungen	
KA	17035
KA-COM	17121
HS	1369
LIGER	17037
KA-PRO	17064
osłony przezroczyste / transparente Abdeckungen	
KA	17036
KA-COM	17122
HS	1370
KA-PRO	17065

osłony czarne / schwarze Abdeckungen	
LIGER	17040

242

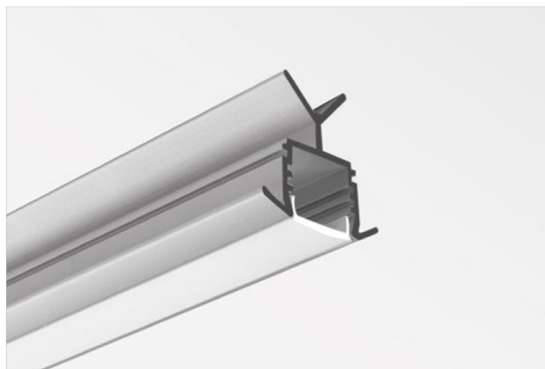
zaślepki szare / graue Endkappen	
POR	24021
POR-OTW	24137
mocowniki / Befestigungsclips	
POR	24014
POR-PLUS	24111
inne akcesoria / sonstiges Zubehör	
DŁAWNICA 8.8X1.2 / KABELVERSCHRAU- BUNG 8.8X1.2	00802



Extrusions for handrail, stair, corridor and footpath lighting /
Perfiles para barandillas, escalones, pasillos e iluminación de caminos

POR

REF. B6144



Fits various pipe handrail diameters.
Backlighting embedded in stair handrails.
Easy assembly and disassembly with latches.

APPLICATION

- lighting assembly in steel pipe handrails.

ASSEMBLY

- using dedicated latches, embedded inside the handrail.

ADDITIONAL INFORMATION

- two different mounting inserts allow mounting the extrusion in handrails with an inner diameter from 1.65" / 42 mm to 1.92" / 49 mm.
- the extrusion can be sealed to IP67.

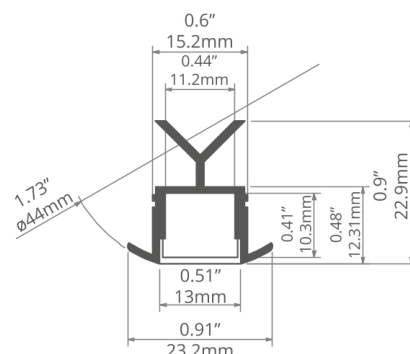
extrusion / perfil

length / longitud	space for LED strip / espacio para tira de LED	surface finish / terminado de superficie	reference number / número de artículo
39.4" / 1 m	0.43" / 11 mm	● Silver anodized / Ánodo de plata	B6144ANODA_1
78.7" / 2 m			B6144ANODA_2

accessories / accesorios

frosted covers / difusores escarchadas	grey end caps / tapas finales gris
KA 17035	POR 24021
KA-COM 17121	POR-OTW 24137
HS 1369	mounting brackets / soporte de montaje
LIGER 17037	POR 24014
KA-PRO 17064	POR-PLUS 24111
clear covers / difusores transparentes	other accessories / otros accesorios
KA 17036	8.8x1.2 GLAND / GLÁNDULA 00802
KA-COM 17122	
HS 1370	
KA-PRO 17065	
black covers / difusores negro	
LIGER 17040	

242



Se adapta a una amplia gama de diámetros de pasamanos.

Retroiluminación incrustada en la barandilla de las escaleras.

Fácil montaje y desmontaje con pestillos.

APLICACIÓN

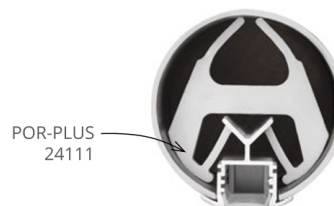
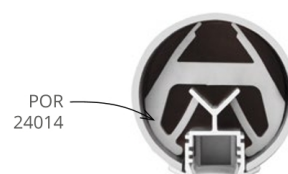
- Montaje de iluminación en barandillas de tubo de acero.

MONTAJE

- utilizando pestillos dedicados, incrustados dentro de la barandilla.

INFORMACIÓN ADICIONAL

- dos inserciones de montaje diferentes permiten montar el perfil en barandillas con un diámetro interior de 1.65" / 42 mm to 1.92" / 49 mm.
- el perfil puede ser sellada a IP67.



Aluminium profile specialized - is designed to mount LED lighting in the armrests and railings made of steel pipe, stainless steel, steel or aluminum, with a diameter of 42 mm and a wall thickness of 2 mm. You can seal profile to IP67.

Aluminium profile specialist - is designed to mount LED lighting in the handrails and balustrades made of steel pipe, stainless steel, steel or aluminum, with a diameter of 42 mm and a wall thickness of 2 mm. It is possible to seal the profile to IP67.

LED lighting successfully displace conventional light sources. His invaluable advantages are, of course, energy efficiency, mainly through efficient consumption of power consumption, as well as ecology and economy at the same time. LED products do not contain environmentally harmful substances are extremely durable 50 thousand. This burning hours up to 25 years of operation. As a result, we do not pollute our environment management often light.

Liked by the customers advantage is the miniaturization, because instead of bulbs, even the smallest, yet here we have a smaller diode and increasingly LEDs within a module, not only about the white color of light, but also in RGB versions. It is this feature allows light the corners of whether the usable space, which has been lightened thanks to kinkietom, then recessed luminaires. Today we have a LED strip that size, the ability to cut and compatibility with the most varied drivers, beats types of lighting, where we grew up.

Aluminium profiles for balustrades are two major features decorative - help illuminate the stairs in a very individual way, but above all provide security, regardless of the structure of degrees, in collaboration with the drivers, you can leisurely wander down the stairs even in the middle of the night.

LED profiles for hand rails contributed significantly to change the arrangement of staircases, or the entrance to the attic. They have the advantage over lamps, sconces or recessed luminaires that can be mounted permanently and in the security and lighting in a place where there are no walls. Customers fantasy knows no boundaries here. Aluminium profiles LED handrail and balustrade can be embedded directly in the place where usually hold, or in the stair treads.

Thanks casings, zaślepkom and snap buttons, the profiles are precisely fixed, but also gain additional protection for LED strips. Does not penetrate in a non dust, it is even more limited access to moisture. In addition, the casing surface unify strictly adhere to the profile, of which it is an integral part and thus affecting the impressive and elegant decoration.

To install the profile, you must cut the balustrade or railing and using double-sided tape or glue to attach the tray created a sufficiently long aluminum profile.

Level of 12V makes the installation is safe for all users. Using profiles simultaneously with podstopnicach and such. In the handrail with a suitably translucent casing makes lit corridor have not only sufficient for use, but also in our imaginary individual category.

Lighting hand rails with LED technology, thanks to its modern solution, can be part of intelligent lighting systems. To illuminate the staircase perfectly, efficiently and effectively, you must complete several items are all available in our store. We recommend planning the purchase of a stair driver for LED lighting - has special features dedicated staircase, buttons and motion sensors to automate start-up or dimming the lighting in its use at the time. In addition, of course, the equipment that will emit light, or light source with fixtures and profiles precisely. In addition, the power supplies, cables and a cabinet / box mounting adapter.

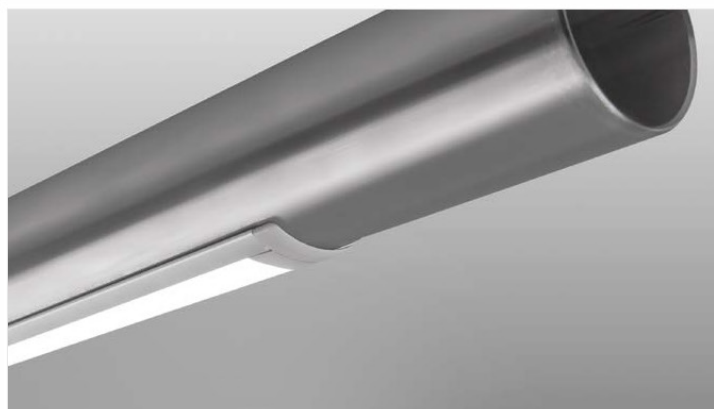
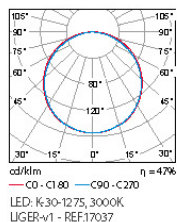
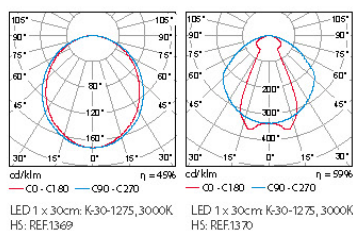
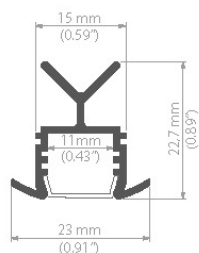
11/ Profil do oświetlania poręczy, schodów / Extrusions for handrails, stair lighting / Handlaufbeleuchtung

POR

PL/ Profil POR przeznaczony jest do **montowania oświetlenia LED w poręczach i balustradach** wykonanych z rury ze stali, stali nierdzewnej, kwasoodpornej lub aluminium.

EN/ POR Extrusion is designed to **mount LED lighting into handrails** made of steel, stainless steel or aluminum tubing.

DE/ Das POR Profil ist für eine **LED Beleuchtung in Handläufe** aus Stahl-Edelstahl- oder Aluminiumrohr mit einem.



POR

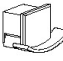

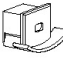

dlugość length Länge	szerokość paska LED LED strip width Breite LED Band	wykończenie powierzchni surface finish Oberfläche	numer artykułu article number Artikelnummer
1,05m (standard) 2,10m (standard)	1 x LED strip max. 10,8 mm	● anodowany / anodized / eloxiert	B6144ANODA

akcesoria / accessories / Zubehör



OSŁONKI / COVERS / ABDECKUNGEN

	KA-BIS	łatwy montaż, dobre rozpraszanie światła / easy to assemble, very good light dispersion / einfach zu montieren sehr gute Lichtstreuung	1m, 2m, 3m (standard)	PC	mleczna / frosted / opak	17071
					przezroczysta / transparent	17072
	HS	certyfikat UV, dobra klasa ognioodporności / UV certificate, good class of refractory-resistance / UV-Zertifikat, gute Feuerwiderstandsklasse	1m, 2m, 3m (standard)	PC	mleczna / frosted / opak	1369
					przezroczysta / transparent	1370
	LIGER-v1	doskonałe właściwości rozpraszające, wysoka jakość / excellent diffusing properties, high quality / Hervorragende diffundierende Eigenschaften, hohe Qualität	1m, 2m, 3m (standard)	PC	mleczna / frosted / opak	17037

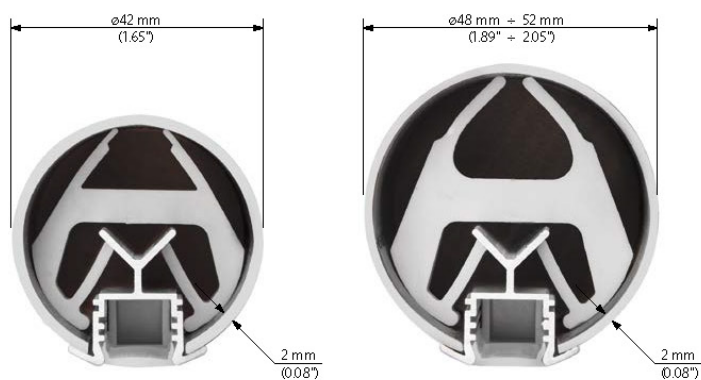
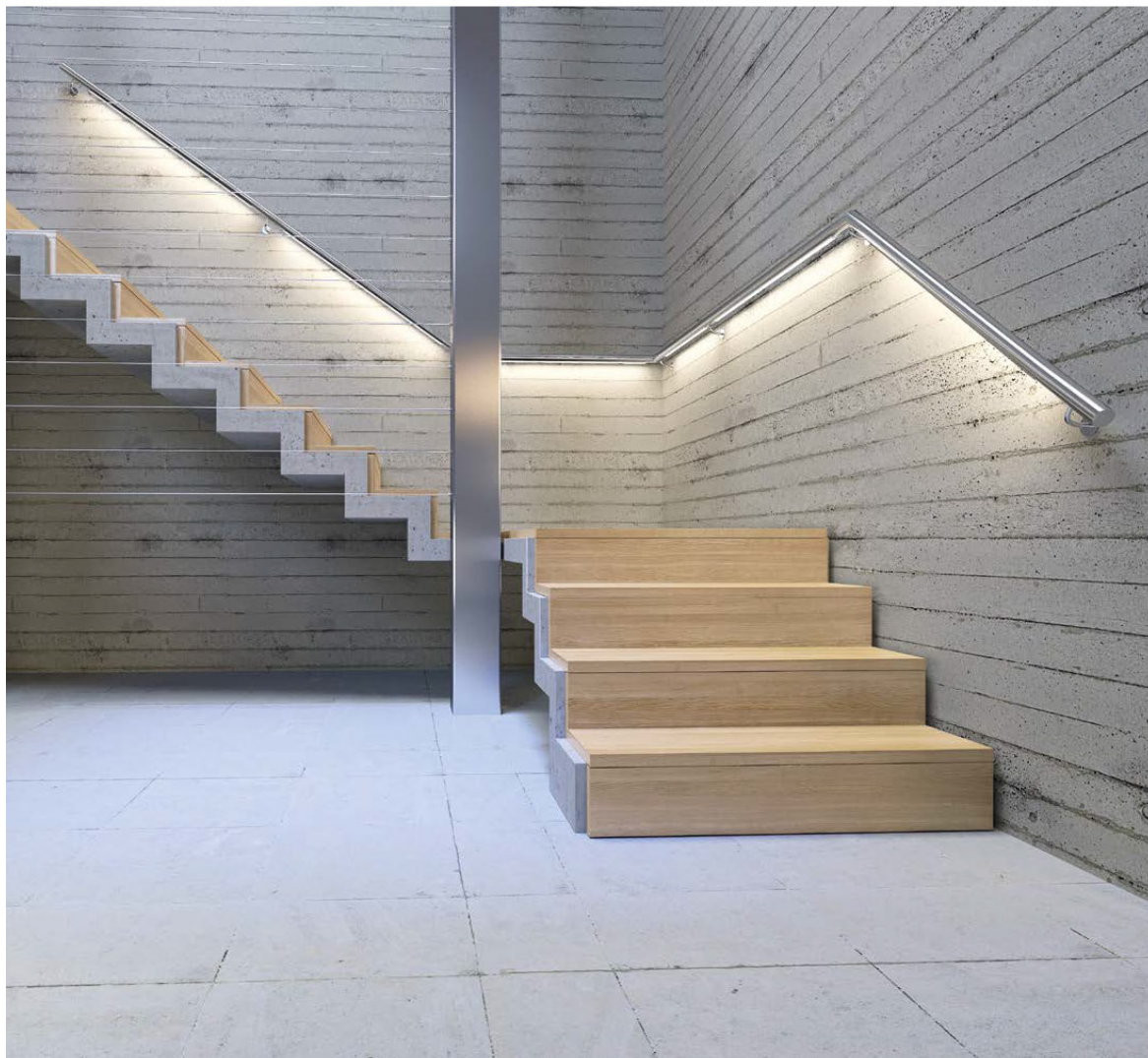
ZASŁEPKI / END CAP / ENDKAPPEN

	POR	zaślepka podstawowa / basic end cap / Endkappe	PP		jasnoszara / light gray / hellgrau	24021
	POR	zaślepka z otworem / end cap with hole / Endkappe mit Kabelausgang	PP		jasnoszara / light gray / hellgrau	24137

AKCESORIA MONTAŻOWE / MOUNTING ACCESSORIES / MOUNTING ACCESSORIES

	POR	zatrząsk / mounting insert / Einraster	PP			24014
	PORPLUS	zatrząsk / mounting insert / Einraster	PP			24111

POR



PROSTA KONSTRUKCJA, SZYBKİ MONTAŻ

Profil POR pasuje do rur ze stali, stali nierdzewnej, kwasoodpornej lub aluminium, o grubości ścianki 2 mm i średnicy 42 mm lub od 48 mm do 52 mm. Istnieje możliwość uszczelnienia profilu do IP67.

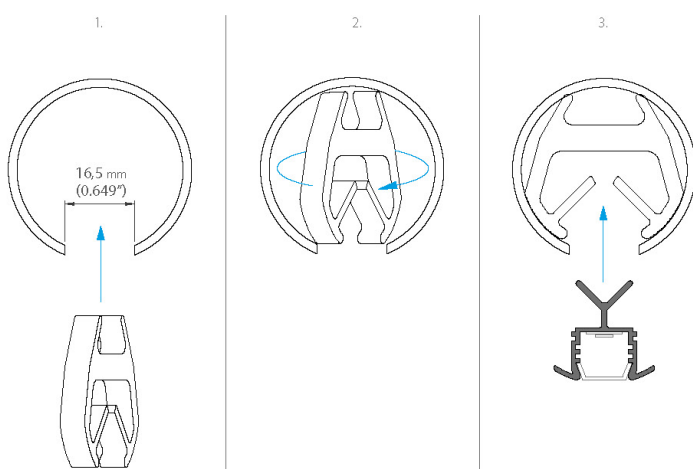
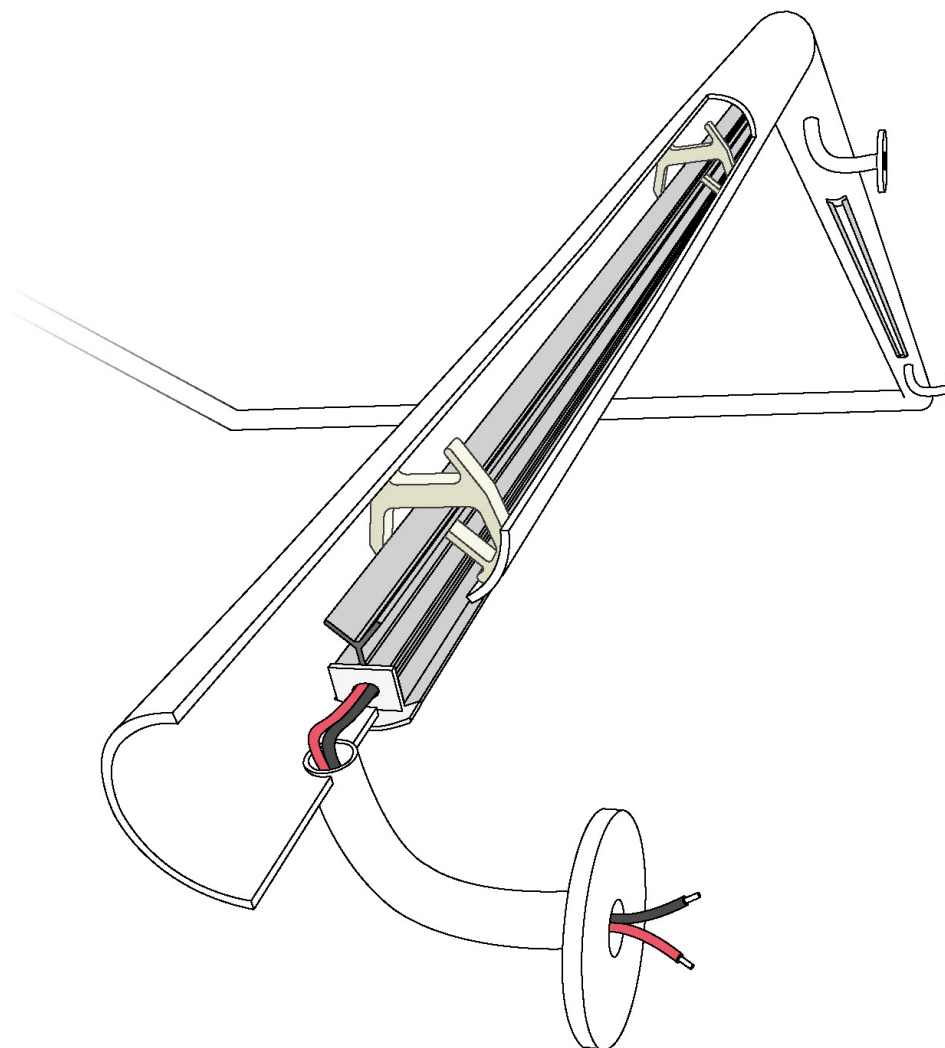
SIMPLE CONSTRUCTION, FAST ASSEMBLY

The POR extrusion is suitable for pipes made of steel, stainless steel, acid resistant steel or aluminium with a wall thickness of 2 mm and diameter of 42 mm or from 48 to 52 mm. It is possible to seal the extrusion to IP67.

EINFACHE KONSTRUKTION, SCHNELLE MONTAGE

Das Profil POR ist an die Rohre aus Stahl, Edelstahl, Stahl oder Aluminium mit der Wandstärke von 2 mm und dem Durchmesser von 42 mm oder von 48 mm bis 52 mm angepasst. Es ist möglich, das Profil bis zur Schutzklasse IP67 abdichten.

POR



MONTAŻ

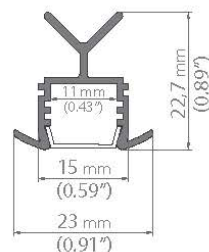
Montaż oprawy opiera się na zastosowaniu zatrzasków POR ukrytych wewnątrz poręczy. Możliwy jest demontaż profilu. Należy go wykonać stosując dźwignię i podważając oprawę za kołnierze po obu stronach bezpośrednio przy zatrzaskach.

MOUNTING

Mounting of the light fixture is based on application of the POR latches hidden inside the handrail. It is possible to disassemble the extrusion which should be carried out by levering the lighting fixture using flanges on both sides, directly at the latches.

MONTAGE



Die Montage der Leuchte basiert auf dem Einsatz von den POR-Klammern, die im Geländer versteckt wird. Mit dem Hebel sollen die Leuchtenflansche auf den beiden Seiten direkt bei Klammern geöffnet werden.



POR PROFIL	dlugość length Länge	szerokość paska LED LED strip width Breite LED Band	wykończenie powierzchni surface finish Oberfläche	numer artykułu article number Artikelnummer
	1,05 m	1 x LED strip max. 10,8 mm	anodowany anodized eloxiert	B6144

możliwość uzyskania poziomu szczelności IP 67 / IP 67 waterproof level can be achieved / Sonderanfertigung: wasserdicht bis IP67

OSŁONKI / COVERS / ABDECKUNGEN

			UV CERTIFICATE
HS  	1,05 m	mleczna / frosted / opak	1369
		przezroczysta / transparent	1370

płaska, dobre rozpraszanie światła / flat, very good light dispersion / flach, sehr gute Lichtstreuung

			LINE OF LIGHT
LIGER 	1,05 m	mleczna matowa / frosted matte / opak	17031

tworzywo optyczne / optical material / optisches Material

POR - ZAŚLEPKA / END CAP / ENDKAPPE



24021

ZATRZASK POR / MOUNTING INSERT / MONTAGEEINSATZ



24014

LED Profile

* Dostępne po uzgodnieniu z działem handlowym / Available by arrangement with sales department /
verfügbar nach Absprache mit dem Vertrieb

POR

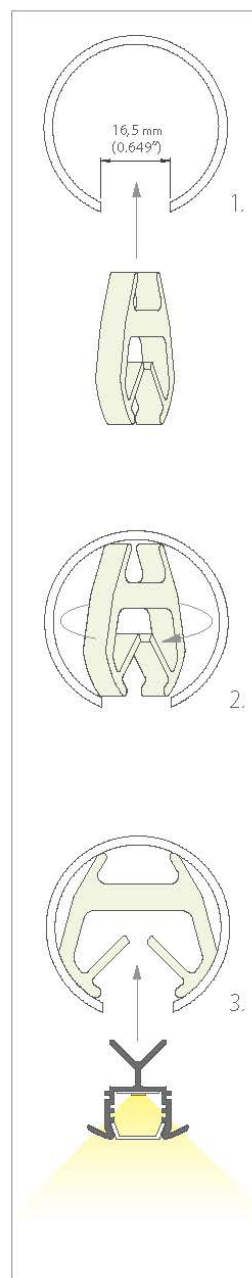
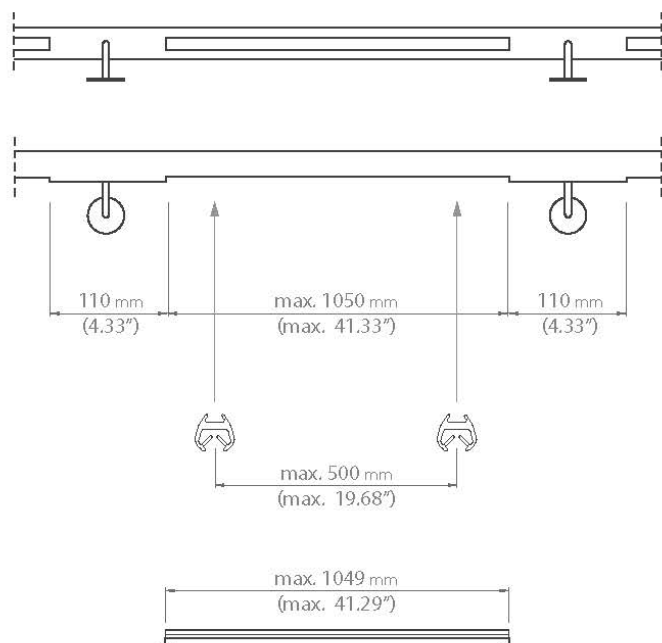
111



PL Profil POR przeznaczony jest do montowania oświetlenia LED w poręczach i balustradach wykonanych z rury ze stali, stali nierdzewnej, kwasoodpornej lub aluminium, o średnicy 42 mm i grubości ścianki 2 mm. Możliwość uszczelnienia profilu POR do IP67.

EN POR Extrusion is designed to mount LED lighting into handrails made of steel, stainless steel or aluminum tubing with a diameter of 42mm and wall thickness of 2mm. POR extrusion has the ability to be sealed to IP67.

DE Das POR Profil ist für eine LED Beleuchtung in Handläufe aus Stahl-Edelstahl- oder Aluminiumrohr mit einem Durchmesser von 42 mm und 2 mm Wandstärke vorgesehen. Als Sonderanfertigung kann mit dem POR Profil eine Wasserdichtheit von IP67 erreicht werden.



PL Demontaż opraw należy wykonać stosując dźwignię i podważając oprawę za kolnierze po obu stronach bezpośrednio przy zatrzaskach. Demontaż opraw może spowodować ich odkształcenie. W zastosowaniach zewnętrznych w oprawach POR należy stosować diody wodoodporne lub oprawy uszczelnione. W poręczach należy wykonać otwory umożliwiające ujęcie dla wody z jej wnętrza.

EN Removing the fixture should be performed by releasing the flanges from both sides of the latches. Removing the fixture can cause their deformation. In outdoor applications waterproof LEDs should be used or the fixture should be sealed. Holes should be made in the handrails to allow an outlet for water trapped inside.

DE Das Entfernen der Halterung kann durch Lösen der Flansche auf beiden Seiten durchgeführt werden, dabei kann es zu Verformung der Halterung kommen. Im Außenbereich sollten wasserdichte LEDs verwendet werden. LEDs die nicht wasserdicht sind, sollten abgedichtet werden. Es müssen Löcher in die Handläufe gebohrt werden, um den Abfluss von Kondenswasser zu ermöglichen.

