

Link to the product: <https://stair-lighting.com/profile-led-pds-4-plus-black-p-2803.html>

Profile LED PDS-4-PLUS black

Price	7.35 Euro
Availability	Available
Shipping time	3 days
Number	2803
Manufacturer	KLUS

Product description

Important Information

The purchase a piece in the store means the purchase 1 linear meter of the profile or cover

If you want to buy a profile that has a length of 2 meters you have to buy 2 pieces, 3 meters you have to buy 3 pieces, and the multitude of quantity when ordering.

The total length of the aluminum profile or the panel to the profile - is the total quantity of the piece number that was bought in the store.

The choice of the appropriate shipping method will take place at the end of the order process.

[The details of the shipping method and packaging of the aluminum profiles you will find here \(click in the link\)](#)

Anodized aluminum profile

The product you have selected contains only - aluminum profile - does not include the accessories located in the Accessories tab.

Additional accessories like covers, end caps, electricity conductive end cap, mounting bracket, fasteners, mounting springs, proximity switch, micro switch, mounting system and others are available under "Accessories".

If you are interested in longer lengths than one meter, write to us we will quote the delivery cost to you. Transport companies expect additional charges for long shipments.

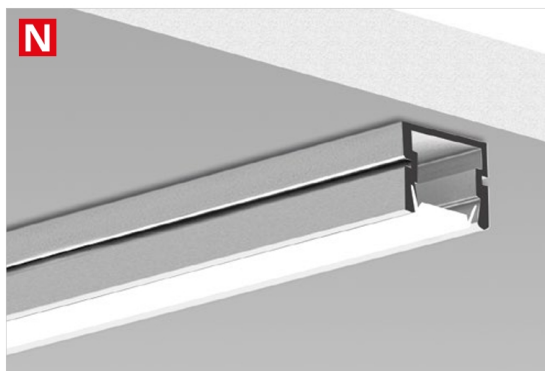
For each country is different maximum length of the profile that we can send. It does not depend on us only by courier.

We also do service cutting aluminum profiles to the indicated size - write or call get comprehensive information.

Profile uniwersalne do montażu na powierzchni, wbudowania lub podwieszenia /
Universalprofile zur Aufputz-, Unterputzmontage oder zum Abhängen

PDS-4-PLUS

REF. C1263



Minimalne gabaryty dla pasków LED o szerokości 14 mm.
oraz dla uzyskania linii światła.

Dedykowana zaślepka PDS-4-PLUS – nie ma konieczności
docinania osłon pod zaślepkę.

Błyskawiczny i pewny montaż uszczelnionych pasków
LED rękawem silikonowym „8-KLIK”.

Łatwe i „czyste” serwisowanie uszczelnionych pasków
LED w profilu (bez narzędzi i kleju).

Duża ilość akcesoriów dodatkowych.

PRZEZNACZENIE PRODUKTU:

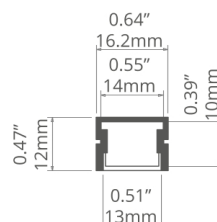
- jego przeznaczenie jest uniwersalne
- umożliwia budowanie opraw oświetleniowych zewnętrznych
o podwyższonej szczelności.

MONTAŻ:

- za pośrednictwem akcesoriów mocujących firmy
- za pośrednictwem klejów montażowych, profesjonalnych
taśm dwustronnie przylepnych.

DODATKOWE INFORMACJE:

- linia światła możliwa do uzyskania z osłoną LIGER oraz
z paskiem LED z minimalną ilością 120 LED/m,



Mindestabmessungen für 14 mm breite LED-Streifen
und um eine Lichtlinie zu bilden.

Spezielle PDS-4-PLUS Endkappe - Abdeckungen müssen
für die Endkappe nicht zugeschnitten werden.

Schnelle und sichere Montage von versiegelten
LED-Streifen mit der "8-CLICK" Silikonhülle.

Einfache und "saubere" Wartung von versiegelten
LED-Streifen im Profil (ohne Werkzeuge und Kleber).

Zahlreiche Zubehörteile.

ANWENDUNG

- ein Mehrzweck-Profil
- damit können Außenleuchten mit erhöhter Dichtheit gebaut
werden

MONTAGE

- mit Befestigungszubehör von
- mit Montageklebstoffen, professionellen doppelseitigen
Klebebändern

ZUSÄTZLICHE INFORMATIONEN

- Lichtlinie möglich mit einer LIGER Abdeckung und einem
LED-Streifen mit mindestens 120 LEDs/m

profil / Profil

długość / Länge	szerokość LED / LED-Breite	wykończenie powierzchni / Oberfläche	numer artykułu / Artikelnummer
1 m	14 mm	● Srebrny anodowany / Silber eloxiert	C1263ANODA_1
2 m			C1263ANODA_2
3 m			C1263ANODA_3
1 m		● Czarny anodowany / Schwarz eloxiert	C1263K7_1
2 m			C1263K7_2
3 m			C1263K7_3

akcesoria / Zubehör

osłony mleczne / opale Abdeckungen	osłony przezroczyste / transparente Abdeckungen	osłony czarne / schwarze Abdeckungen	zaślepki szare / graue Endkappen
KA 17035	KA 17036	LIGER 17040	PDS-4-ALU-OTW-MW 00027
HS 1369	HS 1370		PDS-4-ALU-MW 00026
KA-COM 17121	KA-COM 17122	zaślepki metalizowane / metallisierte Endkappen	PDS-4-ALU-OTW 1057
LIGER 17037	KA-PRO 17065	PDS-4-ALU 24061	PDS-4-ALU 1056
LIGER 17037OP			PDS-4-PLUS 24337
KA-PRO 17064			

PDS-4-PLUS



akcesoria / Zubehör

zaślepki czarne / schwarze Endkappen

PDS-4-ALU	24066
PDS-4-ALU-OTW-MW	24162
PDS-4-ALU-OTW	24081
PDS-4-PLUS	24344

zaślepki przewodnikowe / leitende Endkappen

PDS-4-ALU	1407
-----------	-------------

wysięgniki / Ausleger

KSG-AB	42051
--------	--------------

sprężyny mocujące / Befestigungsfedern

PDS	00800
-----	--------------

zawieszki / Befestigungen

PUSZ-LIN-MR	42258
PUSZ-PRET-MR	42252
DP	00644
DP-MOC	00645
DP-MOC-ZO	00646
DP-MOC-ZZ	00647
DP-ZO	00649
DP-ZZ	00651

główce / Köpfe

BZP	42213
BZP-ZO	42214
BZP-ZZ	42215
ST	42216
ZO	42217
ZZ	42218

zestawy mocowań / Befestigungssätze

M3	42303
M4	42301
M5	42302
M11	42609
M12	42610
M13	42611
M14	42612
W1	42602
W2	42603
W6	42604
W7	42605
W9	42607
W10	42608
RG-1	42647
RG-1	42648

mocowniki / Befestigungsclips

PDS-STN	24190
PL-PDM	24041
REG-PD-UV	24270
PDS	24189
PDS	24223

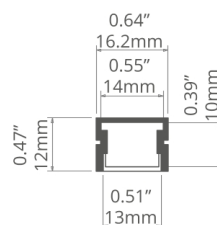
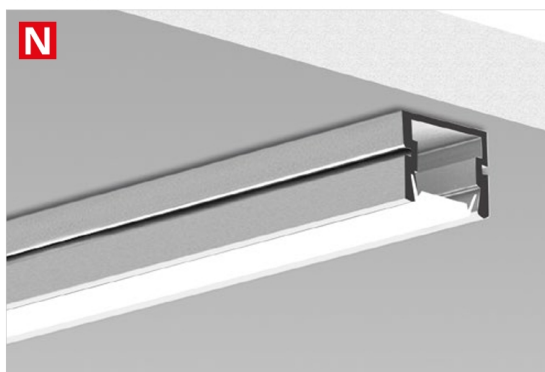
inne akcesoria / sonstiges Zubehör

DLAWNICA 8.8X1.2 / KABELVERSCHRAU- BUNG 8.8X1.2	00802
---	--------------

Universal Extrusions for surface mount, recessed or suspended applications /
Perfiles universales para aplicaciones de montaje en superficie, empotradas o suspendidas

PDS-4-PLUS

REF. C1263



Minimum dimensions for (0.55" / 14 mm) wide LED strips and to obtain a line of light.

8-KLIK series LED strips can be mounted quickly and securely.

Easy and clean servicing of watertight LED strips in the extrusion (without tools or glue).

Multiple additional accessories.

APPLICATION

- multipurpose.
- designed for the construction of indoor lighting fixtures with increased ingress protection.

ASSEMBLY

- with mounting accessories from.
- with fixing glues, professional double-sided adhesive tapes.

ADDITIONAL INFORMATION

- line of light obtainable with the various cover an LED strip with at least (36 LED/ft 120 LED/m).



Tamaño mínimo para tiras de LED con un ancho de (0.55" / 14 mm) y para obtener un haz de luz.

Las tiras LED de la serie 8-KLIK se pueden montar de forma rápida y segura.

Servicio fácil y limpio de tiras LED herméticas en la extrusión (sin herramientas ni pegamento).

Múltiples accesorios adicionales.

APLICACIÓN

- multipropósito.
- diseñado para la construcción de luminarias interiores con protección de prueba de agua aumentado.

MONTAJE

- con accesorios de montaje de.
- con pegamentos de fijación, cintas adhesivas profesionales de doble cara.

INFORMACIÓN ADICIONAL

- línea de luz que se puede obtener con el difusor varios y la tira LED con al menos (36LED/ft 120 LED/m).

extrusion / perfil

length / longitud	space for LED strip / espacio para tira de LED	surface finish / terminado de superficie	reference number / número de artículo
39.4" / 1 m	0.55" / 14 mm	● Silver anodized / Ánodo de plata	C1263ANODA_1
78.7" / 2 m			C1263ANODA_2
118" / 3 m			C1263ANODA_3
39.4" / 1 m		● Black anodized / Negro anodizado	C1263K7_1
78.7" / 2 m			C1263K7_2
118" / 3 m			C1263K7_3

accessories / accesorios

frosted covers / difusores escarchadas	clear covers / difusores transparentes	black covers / difusores negro	grey end caps / tapas finales gris
KA 17035	KA 17036	LIGER 17040	PDS-4-ALU-OTW-MW 00027
HS 1369	HS 1370		PDS-4-ALU-MW 00026
KA-COM 17121	KA-COM 17122	metallized end caps / tapas finales metalizados	PDS-4-ALU-OTW 1057
LIGER 17037	KA-PRO 17065	PDS-4-ALU 24061	PDS-4-ALU 1056
LIGER 17037OP			PDS-4-PLUS 24337
KA-PRO 17064			

PDS-4-PLUS



accessories / accesorios

black end caps / tapas finales negro		fasteners / soportes		mounting sets / sets de montaje		mounting brackets / soporte de montaje	
PDS-4-ALU	24066	PUSZ-LIN-MR	42258	M3	42303	PDS-STN	24190
PDS-4-ALU-OTW-MW	24162	PUSZ-PRET-MR	42252	M4	42301	PL-PDM	24041
PDS-4-ALU-OTW	24081	DP	00644	M5	42302	REG-PD-UV	24270
PDS-4-PLUS	24344	DP-MOC	00645	M11	42609	PDS	24189
		DP-MOC-ZO	00646	M12	42610	PDS	24223
electricity conductive end caps/ tapas finales conductora de electricidad		DP-MOC-ZZ	00647	M13	42611		
PDS-4-ALU	1407	DP-ZO	00649	M14	42612	other accessories / otros accesorios	
		DP-ZZ	00651	W1	42602	8,8x1,2 GLAND / GLÁNDULA	00802
				W2	42603		
arms / brazo-varillas		heads / cabezales		W6	42604		
K5G-AB	42051	BZP	42213	W7	42605		
		BZP-ZO	42214	W9	42607		
mounting springs / resortes de montaje		BZP-ZZ	42215	W10	42608		
PDS	00800	ST	42216	RG-1	42647		
		ZO	42217	RG-1	42648		
		ZZ	42218				

- Designed to reach an IP67 waterproof rating
- Minimum dimensions for 14 mm wide LED strips and to obtain a line of light
- Dedicated PDS-4-PLUS end cap - no need to cut the covers to fit the end cap
- LED strips mounted quickly and securely with the 8-KLIK silicone sleeve
- Easy and clean servicing of watertight LED strips in the profile (without tools or glue)
- Multiple additional accessories

Application

- multipurpose
- designed for the construction of indoor lighting fixtures with increased ingress protection

Assembly

- with mounting accessories from KLUŚ
- with fixing glues, professional double-sided adhesive tapes

Additional information

- possibility of making a linear fixture with IP67 protection, which means the fixture is dustproof and waterproof
- line of light obtainable with the LIGER cover an LED strip with at least 120 LED/m 9.6W
- space for LED strip: 14 mm

Profile bending with covers: HS, LIGER, KA. Can be bent in the plane adjacent to the LED strip.

Minimum internal radius
180 mm

Minimum external radius
200 mm

- minimum radius - bending radius which when exceeded causes destruction (deformation, bending or lack of compatibility with other accessories, e.g. covers, end caps, etc.) of the profile
- internal radius - refers to the profile bent so that the cover is facing the inside of the arch
- external radius - refers to the profile bent so that the cover is facing the outside of the arch
- irregular curves are possible after consultation and individual quotation
- when bending anodized profiles, one should be aware of cracking of the anode coating (which may be more or less visible depending on the radius)

