

Link to the product: <https://stair-lighting.com/profile-led-nisa-kon-p-1929.html>

Profile LED NISA-KON

Price	13.40 Euro
Availability	Available
Shipping time	4 days
Number	1929
Manufacturer	KLUS

Product description

Important Information

The purchase a piece in the store means the purchase 1 linear meter of the profile or cover

If you want to buy a profile that has a length of 2 meters you have to buy 2 pieces, 3 meters you have to buy 3 pieces, and the multitude of quantity when ordering.

The total length of the aluminum profile or the panel to the profile - is the total quantity of the piece number that was bought in the store.

The choice of the appropriate shipping method will take place at the end of the order process.

[The details of the shipping method and packaging of the aluminum profiles you will find here \(click in the link\)](#)

Aluminum profile

The product you have selected contains only - aluminum profile - does not include the accessories located in the Accessories tab.

Additional accessories like covers, end caps, electricity conductive end cap, mounting bracket, fasteners, mounting springs, proximity switch, micro switch, mounting system and others are available under "Accessories".

If you are interested in longer lengths than one meter, write to us we will quote the delivery cost to you. Transport companies expect additional charges for long shipments.

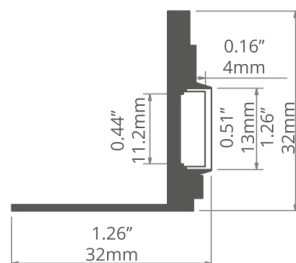
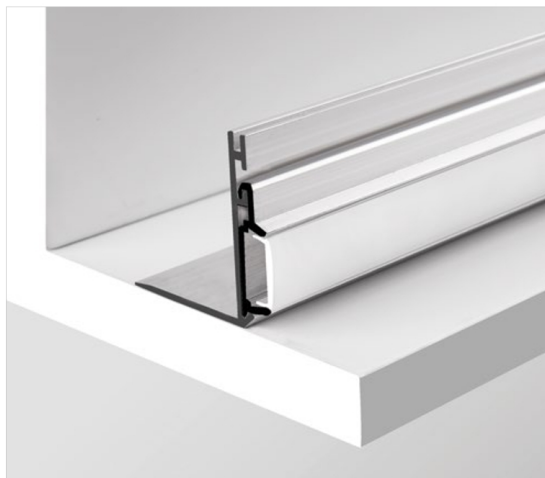
For each country is different maximum length of the profile that we can send. It does not depend on us only by courier.

We also do service cutting aluminum profiles to the indicated size - write or call get comprehensive information.

Profile do oświetlenia nisz /
Profile Nischenbeleuchtung

NISA-KON

REF. 18027



Oświetlanie nisz o dowolnej grubości, głębokości i wysokości.

Możliwość montażu w dowolnej odległości od krawędzi niszy.

PRZEZNACZENIE PRODUKTU:

- nastrojowe podświetlenie nisz architektonicznych znajdujących się w niewielkiej odległości od ściany i skierowanych w jej kierunku.

MONTAŻ:

- za pomocą wkrętów odpowiednio dobranych do rodzaju podłoża.

DODATKOWE INFORMACJE:

- możliwość montażu w orientacji poziomej i pionowej,
- źródło światła w łatwo demontowalnej oprawie ONISA.



Beleuchtung von beliebig dicken, tiefen und hohen Nischen.

Beliebige Entfernung vom Nischenrand.

ANWENDUNG

- stimmungsvolle Hintergrundbeleuchtung von Nischen, die sich in geringer Entfernung von der Wand befinden und auf sie gerichtet sind

MONTAGE

- mit Schrauben angepasst an den Untergrund

ZUSÄTZLICHE INFORMATIONEN

- horizontal oder vertikal montierbar
- Lichtquelle in der leicht demontierbaren Leuchte ONISA

profil / Profil

długość / Länge	szerokość LED / LED-Breite	wykończenie powierzchni / Oberfläche	numer artykułu / Artikelnummer
1 m	11 mm	Nieanodowany (surowe aluminium) / Nicht eloxiert (Aluminum Natur)	18027NA_1
2 m			18027NA_2

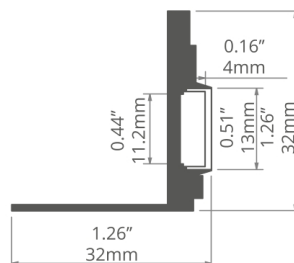
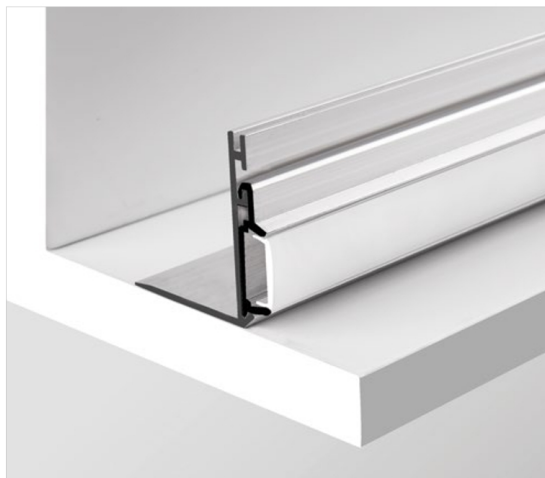
akcesoria / Zubehör

osłony mleczne / opale Abdeckungen	osłony przezroczyste / transparente Abdeckungen	zaślepki szare / graue Endkappen	inne akcesoria / sonstiges Zubehör
KA 17035	KA 17036	ONISA 24100	DŁAWNICA 8.8X1.2 / KABELVERSCHRAUBUNG 8.8X1.2 00802
KA-COM 17121	KA-COM 17122	łączniki / Verbindungsstücke	
HS 1369	HS 1370	ZM-NA-180 42724	
KA-PRO 17064	KA-PRO 17065	ZM-NA-90 42723	
LIGER 17037		ZM-NA-120 42729	
		ZM-NA-135 42725	
		ZM-NA-PION-90 42726	
		ZM-NA-PION-135 42727	

Extrusions for niche lighting /
Perfiles para iluminar nichos

NISA-KON

REF. 18027



Illumination of niches of any thickness, depth and height.
Can be mounted at any distance from the edge of the niche.
Easy servicing.

APPLICATION

- ambient lighting of architectural niches located a short distance from the wall and directed towards it.

ASSEMBLY

- using screws appropriately selected for the mounting surface.

ADDITIONAL INFORMATION

- can be mounted horizontally or vertically.
- the light source is placed in the easily disassembled ONISA lighting fixture.



Iluminación de nichos de cualquier grosor,
profundidad y altura.
Se puede montar a cualquier distancia desde
el borde del nicho.

Servicio fácil.

APLICACIÓN

- iluminación ambiental de nichos arquitectónicos ubicados a poca distancia de la pared y dirigidos hacia ella.

MONTAJE

- utilizando tornillos seleccionados adecuadamente para la superficie de montaje.

INFORMACIÓN ADICIONAL

- se puede montar horizontal o verticalmente.
- la fuente de luz se coloca en la luminaria ONISA fácilmente desmontable.

extrusion / perfil

length / longitud	space for LED strip / espacio para tira de LED	surface finish / terminado de superficie	reference number / número de artículo
39.4" / 1 m	0.43" / 11 mm	 Non anodized (raw) / Aluminio crudo (no anodizado)	18027NA_1
78.7" / 2 m			18027NA_2

accessories / accesorios

frosted covers / difusores escarchados	clear covers / difusores transparentes	grey end caps / tapas finales gris	other accessories / otros accesorios
KA 17035	KA 17036	ONISA 24100	8.8x1.2 GLAND / GLÁNDULA 00802
KA-COM 17121	KA-COM 17122	connectors / conectores	
HS 1369	HS 1370	ZM-NA-180 42724	
KA-PRO 17064	KA-PRO 17065	ZM-NA-90 42723	
LIGER 17037		ZM-NA-120 42729	
		ZM-NA-135 42725	
		ZM-NA-PION-90 42726	
		ZM-NA-PION-135 42727	

Architectural niches are places that require thoughtful and non-accidental lighting.

Where it is difficult to ensure that the traditional light illuminates all the necessary elements, the lighting of the led will be perfect. We recommend NISA-KON niche illumination profiles, due to which each niche will gain an excellent and reliable light source. Where simple ceiling or standing lamps do not work, LED lighting in the form of technologically advanced and functional profiles will do its job perfectly. Due to led profiles, it is possible to position the light source exactly where it is most needed.

Led lighting is a solution that will perfectly work in any interior. It is durable, reliable and long lasting, yet energy-efficient. The LEDs mounted in the profiles shine in full light and perfectly illuminate the interior while also taking up very little electricity from the mains. By selecting led profiles you can be sure that even long-term use of lighting will not generate high electricity bills.

The NISA-KON set is a set of two profiles that are perfect for illuminating architectural niches of all shapes and sizes. They are so constructed that they can be installed at a distance from the edge of the niche and still provide an adequate level of illumination. The NISA-KON consists of the TENIKON mounting strip and the ONISA profile, which is embedded in the mounting strip. Once assembled, the kit allows the light to be directed perpendicular to the wall. The mounting strip is angular. Its horizontal edge is mounted directly to the plasterboard. Its vertical edge allows the ONISA profile to be attached. The combination of the two rails provides a durable and durable combination that will provide the right light in any niche for a long time. In order for the ONISA profile to be rigid and durable, it is necessary to use a special silicone cord that is included with the other components. The design provides the perfect illumination, but it is invisible to the eyes and imperceptible to the occupants of the room.

Assembly of the entire set is fast and hassle-free. Each NISA-KON kit comes with a simple and clear user guide that will guide you through the correct installation step by step. The mounting strip is fastened to the plasterboard using specially adapted screws. Prior to installation, the bar must be drilled in order to avoid non-aesthetic and non-functional deformation. All necessary steps are described in the operating manual, so that the installation should not be a problem. NISA-KON profiles work perfectly in any interior, both representative and functional. They will find their use in residential construction and in various types of public utilities. They will be practical and functional in galleries, museums, restaurants and office space. It is an excellent light source that ensures proper illumination of the room, but at the same time the strips and the way they are assembled will be imperceptible.

NISA-KON is a high quality led profile made of the finest materials and accessories with attention to detail. The profile has all the necessary certificates and approvals that should have products intended to illuminate the premises. We invite you to familiarize yourself with the offer of unique, highest quality profiles for niche lighting. They will surely meet all your expectations. If you have any questions, mounting problems or problems in your daily life, we will be pleased to provide you with professional advice and support. Led profiles are a solution that will be 100% reliable in any interior. We highly recommend.

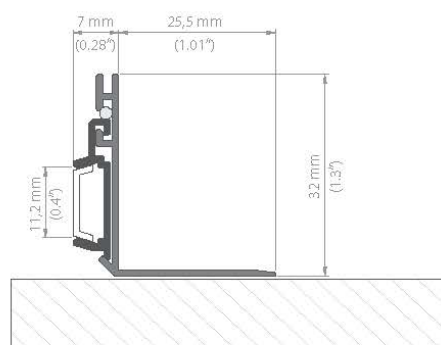


NISA-KON KPL.

REF. 18027NA

OPRAWĘ NISA-KON KPL. MOŻNA MONTOWAĆ DALEJ OD KRAWĘDZI NISZY PRZY ZACHOWANIU MOCNEGO PODŚWIECZENIA

THE NISA-KON KPL FIXTURE CAN BE MOUNTED FURTHER FROM THE EDGE OF A NICHE, WHILE MAINTAINING STRONG ILLUMINATION



NISA-KON KPL. składa się z listwy montażowej TENIKON, profilu ONISA oraz sznura silikonowego.

- długość: 1m, 2m (standard); 3m (dostępne po uzgodnieniu z działem handlowym firmy)
- wykończenie powierzchni: nieanodowany

NISA-KON KPL. consists of TENIKON mounting strip, ONISA extrusion and silicone cord.

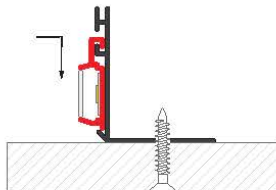
- length: 1m, 2m (standard); 3m (available by arrangement with the sales department)
- surface finish: non anodized



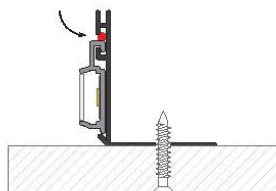
NISA-KON KPL.

1. / Listwa montażowa **TENIKON** mocowana jest do płyty kartonowo-gipsowej na wkręty. Przed montażem sama listwa musi zostać nawiercona aby uniknąć odkształceń.
TENIKON mounting strip is fixed to drywall using mounting screws. Prior to mounting, the strip must be pre-drilled to avoid unwanted deflection.

2. / Na pionowej powierzchni profilu TENIKON montowany jest profil **ONISA**. Montaż nie wymaga użycia specjalistycznych narzędzi.
ONISA extrusion is mounted on the vertical edge of TENIKON strip. Mounting doesn't require the use of specific tools.



3. / Sztwyrne zamocowanie profilu ONISA umożliwia **sznur silikonowy (zawarty w komplecie)**. Konstrukcja oprawy uwzględnia demontaż profilu świecącego, w celach serwisowych.
Rigid mounting of ONISA extrusion is performed with a **silicone cord (included in the set)**.
The fixture's design takes into account unmounting the lighting extrusion for service.



AKCESORIA / ACCESSORIES

4. / pasek LED, szerokość maks. 10,8mm
LED strip, width max. 10,8mm
5. / osłonki / covers
K:
mleczna / frosted, REF. 1547
przezroczysta / transparent, REF. 1548

KA-BIS:
mleczna / frosted, REF. 17071
przezroczysta / transparent, REF. 17072

KA-COM:
mleczna / frosted, REF. 17121
przezroczysta / transparent, REF. 17122
6. / ONISA, zaślepka / end cap, REF. 24100
material - tworzywo sztuczne, kolor - jasnoszary.
Uwaga: zaślepkę należy montować po zamocowaniu osłonki. Zalecamy wklejanie zaślepki.
material - plastic, color - light gray.
Caution: End cap should be mounted after inserting the cover. We recommend gluing the end cap.





