

Link to the product: <https://stair-lighting.com/profile-led-imet-with-space-for-power-supply-p-1116.html>



## Profile LED IMET with space for power supply

Price	<b>37.93 Euro</b>
Availability	<b>Available</b>
Shipping time	<b>4 days</b>
Number	<b>1116</b>
Manufacturer	<b>KLUS</b>

### Product description

#### Important Information

The purchase a piece in the store means the purchase 1 linear meter of the profile or cover

If you want to buy a profile that has a length of 2 meters you have to buy 2 pieces, 3 meters you have to buy 3 pieces, and the multitude of quantity when ordering.

The total length of the aluminum profile or the panel to the profile - is the total quantity of the piece number that was bought in the store.

The choice of the appropriate shipping method will take place at the end of the order process.

[The details of the shipping method and packaging of the aluminum profiles you will find here \(click in the link\)](#)

Profile for the construction of wall fixtures (sconce fixtures), with the light beam angle of 30° up or down. It has integrated functions: fitting of LEDs and protecting them with a cover (diffuser), surface mounting, as well as an option of installation of power supply and other electronic components.

The product you have selected contains only - aluminum profile - does not include the accessories located in the Accessories tab.

Additional accessories like covers, end caps, electricity conductive end cap, mounting bracket, fasteners, mounting springs, proximity switch, micro switch, mounting system and others are available under "Accessories".

If you are interested in longer lengths than one meter, write to us we will quote the delivery cost to you. Transport companies expect additional charges for long shipments.

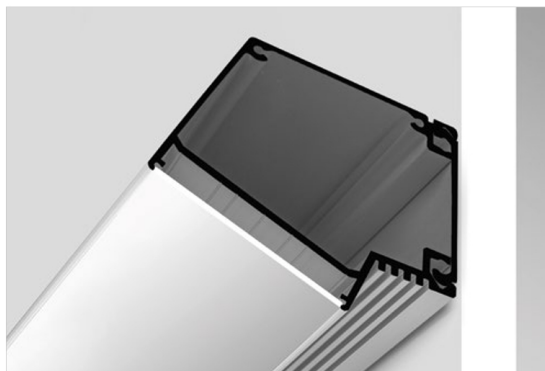
For each country is different maximum length of the profile that we can send. It does not depend on us only by courier.

We also do service cutting aluminum profiles to the indicated size - write or call get comprehensive information.

Profile z komorą na zasilacz /  
Profile mit Raum für Netzgeräte

## IMET

REF. 18012



Duża przestrzeń na zasilacz, elementy elektroniczne i przyłącze elektryczne.

Prostota konstrukcja.

Łatwy montaż oraz demontaż.

### PRZEZNACZENIE PRODUKTU:

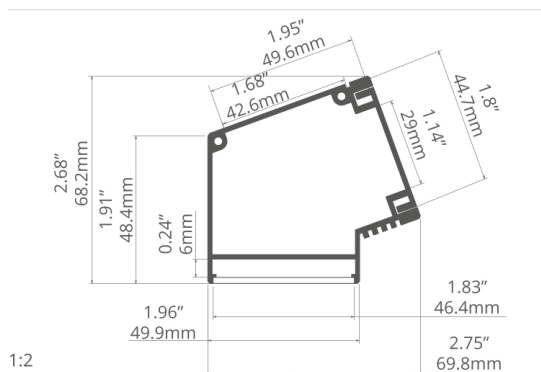
- do budowy opraw kinkietowych świecących pod kątem 30 stopni.

### MONTAŻ:

- za pomocą listwy montażowej, przytwierdzonej wkrętami odpowiednio dobranymi do rodzaju podłoża.

### DODATKOWE INFORMACJE:

- dedykowany głównie do oświetlenia ciągów pieszych,
- do zastosowań wewnętrznych.



Grosser Raum für das Netzteil, den Stromanschluss und elektronische Komponenten.

Einfacher Aufbau.

Leichte Montage und Demontage.

### ANWENDUNG

- zur Montage von Wandleuchten, die im Winkel von 30 Grad leuchten

### MONTAGE

- mit einer Montageleiste, die mit an den Untergrund angepassten Schrauben angeschraubt wird

### ZUSÄTZLICHE INFORMATIONEN

- vor allem zur Beleuchtung von Bereichen des Fußverkehrs
- für Innenanwendungen

### profil / Profil

długość / Länge	szerokość LED / LED-Breite	wykończenie powierzchni / Oberfläche	numer artykułu / Artikelnummer
1 m	44 mm	● Srebrny anodowany / Silber eloxiert	<b>18012ANODA_1</b>
2 m			<b>18012ANODA_2</b>
3 m			<b>18012ANODA_3</b>

### akcesoria / Zubehör

osłony mleczne / opale Abdeckungen	
HSP-47	<b>17051</b>
osłony przezroczyste / transparente Abdeckungen	
HSP-47	<b>17062</b>

zaślepki szare / graue Endkappen	
IMET-P	<b>24016</b>
IMET-L	<b>24017</b>
Inne akcesoria / sonstiges Zubehör	
DŁAWNICA / KABELVERSCHRAU- BUNG 24x1.6	<b>00820</b>
DŁAWNICA 8.8X1.2 / KABELVERSCHRAU- BUNG 8.8X1.2	<b>00802</b>
WKŁADKA MONTA- ŻOWA 45 / MONTA- GEEINSATZ	<b>70011</b>

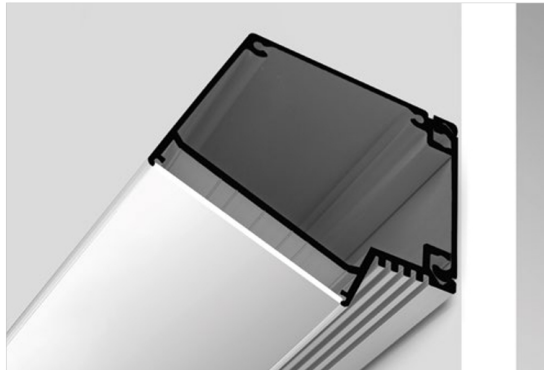




Extrusions with space for power supply /  
Perfiles con alojamiento para suministro de corriente

## IMET

REF. 18012



Large chamber for power supply, electronic components and electrical connection.

Simple design.

Easy assembly and disassembly.

### APPLICATION

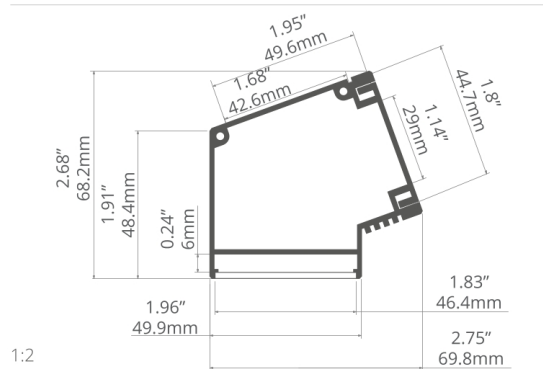
- for construction of wall lamps illuminating at a 30° angle.

### ASSEMBLY

- by means of a mounting strip, fixed with screws appropriately selected for the mounting surface.

### ADDITIONAL INFORMATION

- dedicated mainly to lighting pedestrian routes.
- for indoor applications.



1:2



Cámara grande para el suministro de corriente, componentes electrónicos y conexión eléctrica.

Diseño simple.

Fácil montaje y desmontaje.

### APLICACIÓN

- para la construcción de las lámparas de pared que iluminan en un ángulo de 30°.

### MONTAJE

- por medio de una tira de montaje, fijada con los tornillos seleccionados apropiadamente para la superficie de montaje.

### INFORMACIÓN ADICIONAL

- dedicado principalmente a la iluminación de rutas peatonales.
- para aplicaciones interiores.

### extrusion / perfil

length / longitud	space for LED strip / espacio para tira de LED	surface finish / terminado de superficie	reference number / número de artículo
39.4" / 1 m			<b>18012ANODA_1</b>
78.7" / 2 m	1.73" / 44 mm	● Silver anodized / Ánodo de plata	<b>18012ANODA_2</b>
118" / 3 m			<b>18012ANODA_3</b>

### accessories / accesorios

frosted covers / difusores escarchados	grey end caps / tapas finales gris
HSP-47 <b>17051</b>	IMET-P <b>24016</b>
	IMET-L <b>24017</b>
clear covers / difusores transparentes	other accessories / otros accesorios
HSP-47 <b>17062</b>	8.8x1.2 GLAND / GLÁNDULA <b>00802</b>
	24x1.6 GLAND / GLÁNDULA <b>00820</b>
	MOUNTING IN- SERT 45 / INSER- TO DE MONTAJE <b>70011</b>



Profile LED IMET with space for the power supply has been made of high-grade aluminum, which has been subjected to double anodizing, so that the product has a high resistance to corrosion and any mechanical damage. Profile has two compartments in which to place the light source. They may be attached both to the LED light source, but one chamber may be found only three or four bands / LED strip of width, respectively of 12 mm and 10 mm, respectively, as well as the electronic equipment, which is necessary to power and control sources.

Profile is mostly used to produce a variety of lighting fixtures, which are then mounted on the walls, and have the ability to light up or down, depending on your preference. The lamp is lit at an angle of 30 degrees dismissing the stream of light from the plane to which it is attached.

The profile LED IMET consists of two elements:

- U, which is the main part which assembles LED and all necessary accessories electronic
- Z, i.e., the portion which is attached to the substrate

Assembling the structure is very simple. Both elements are joined together by the so-called. "Click" and the additional protection connections are plastic rods that can be found in a set, and as a separate item in our store. This profile is in standard lengths of up 1 m and 2 m, in the case of interest length of 3 m, please contact the service.

The profile has been designed to allow a perfect hiding power supply and other electronic components in its interior, so that it can be used to illuminate the pedestrian pathways that run along the walls and ceilings, as well as all kinds of corridors, stairways and other such facilities.

Power LED profile LED IMET recommended to override a special cover of HSP47, which is dedicated specifically for him. You can choose from iris milk and transparent. Both are made of polycarbonate and both the one and the other has a certificate that guarantees resistance to all weather conditions, which could damage the iris and UV radiation.

Profile are dedicated accessories, including polypropylene caps, as well as elements that are designed to enable connection of all electrical and mechanical components that are part of the luminaire. All optional accessories can be found on our website under "Accessories".

We invite you to familiarize yourself with our offer.

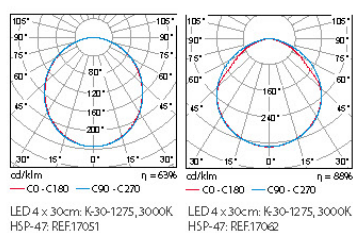
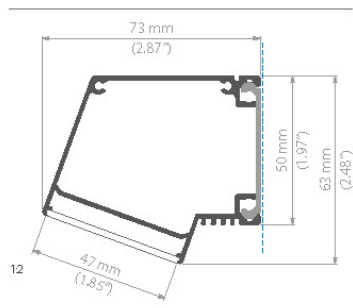
0.9 / Profile z komorą na zasilacz / Extrusions with space to conceal power supplies / Profile mit raum für Netzgeräte

## IMET-KPL

PL / Komplet profili do budowy  
wydajnych opraw ściennych  
(kinkietowych), z kierunkiem świecenia  
pod kątem 30 stopni w dół lub w górę.

EN / A set of extrusions for **construction  
of efficient wall lighting fixtures**  
(wall lamps), with the possibility  
to illuminate downwards or upwards at  
a 30 degree angle.

DE / Ein Satz zum Bau der effizienten  
**Wandleuchten**, mit dem Leuchtwinkel  
30° nach unten oder nach oben zu  
leuchten.




### IMET-KPL

dlugość length Länge	szerokość paska LED LED strip width Breite LED Band	wykończenie powierzchni surface finish Oberfläche	numer artykułu article number Artikelnummer
1m (standard) 2m (standard) 3m (standard) 3 - 6m *	4 x LED strip max. 10,8 mm	● anodowany / anodized / eloxiert	18012ANODA


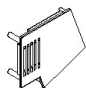
\*\* Na specjalne zamówienie / Special order / Sonderbestellung.

akcesoria / accessories / zubehör



OSŁONKI / COVERS / ABDECKUNGEN

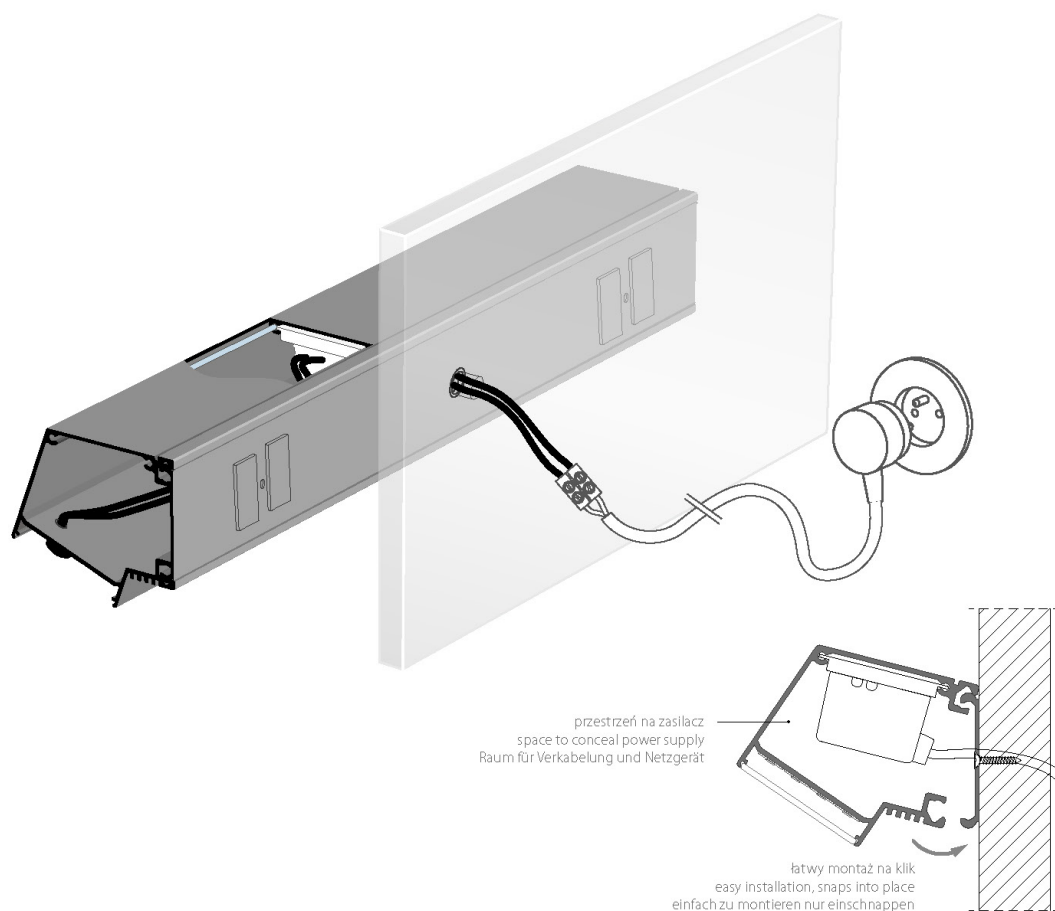
	HSP-47	łatwy montaż, dobre rozpraszanie światła / easy to assemble, very good light dispersion / einfach zu montieren sehr gute Lichtstreuung	1m, 2m, 3m (standard)	PC	mleczna / frosted / opak	17051
					przezroczysta / transparent	17062

ZAŚLEPKI / END CAP / ENDKAPPEN

	IMET	zaślepka prawa / right end cap / rechts Endkappe	PP	● jasno szara / light gray / hellgrau	24016
	IMET	zaślepka lewa / left end cap / links Endkappe	PP	● jasno szara / light gray / hellgrau	24017

AKCESORIA MONTAŻOWE / MOUNTING ACCESSORIES / MOUNTING ACCESSORIES

	Płyta montażowa pod zasilacz / Power supply mounting plate / Montageplatte für Netzgerät					70011
	Pręt z tworzywa ø 2,4mm. Do blokady płyty montażowej pod zasilacz / Plastic rod ø 2.4 mm. For the locking of the power supply mounting plate / Kunststoffstange von ø 2,4 mm. Zur Blockade der Montageplatte für Netzgerät					42221



## IMET KPL.

Przestrzeń na zasilacz Space to conceal power supply  
Raum für Verkabelung und Netzgerät

88



### IMET KPL. PROFIL

długość  
length  
Länge

szerokość paska LED  
LED strip width  
Breite LED Band

wykończenie powierzchni  
surface finish  
Oberfläche

numer artykułu  
article number  
Artikelnummer



1m (standard)  
2m (standard)  
3m \*

4 x LED strip  
max. 10 mm  
3 x LED strip  
max. 12 mm

profil: anodowany  
profile: anodized  
Profil: eloxiert

18012

### OSŁONKI / COVERS / ABDECKUNGEN

#### HSP47



2m (standard)  
3m \*

mleczna / frosted / opak  
przezroczysta / transparent

17051

17062

### IMET- ZAŚLEPKI / END CAPS / ENDKAPPEN



prawa  
right  
rechts

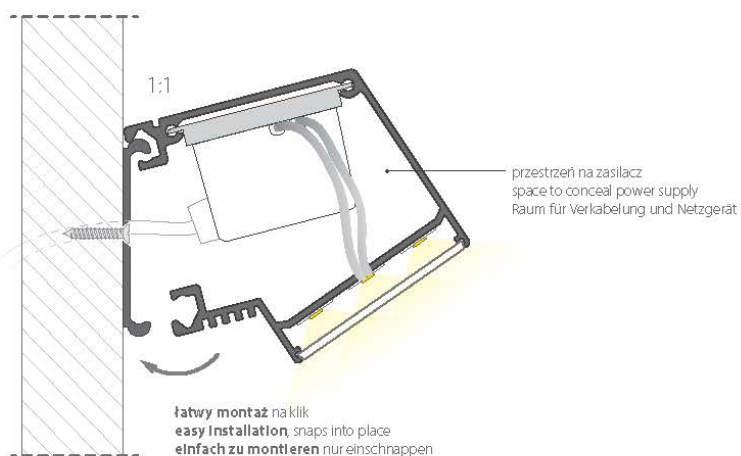
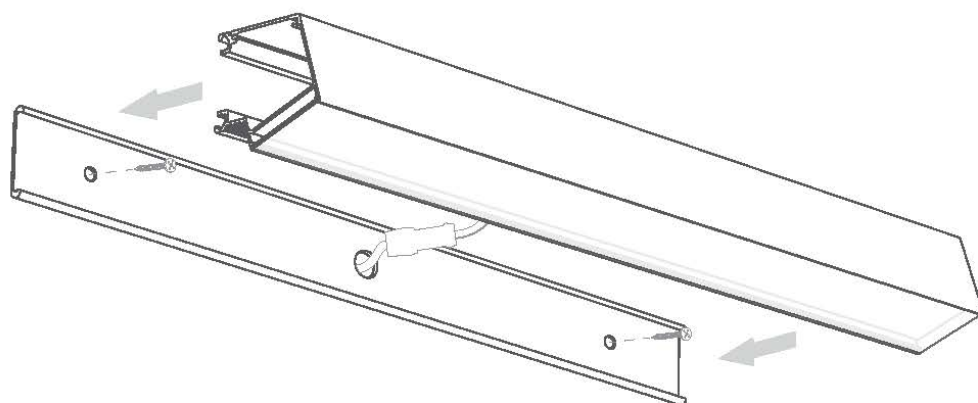


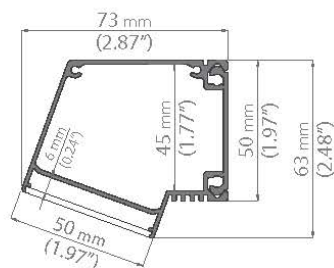
lewa  
left  
links

LED Profile

\* Dostępne po uzgodnieniu z działem handlowym / Available by arrangement with sales department /  
verfügbar nach Absprache mit dem Vertrieb







IMETSET	długość length Länge	szerokość paska LED LED strip width LED Strip Breite	wykończenie powierzchni surface finish Oberfläche	osłona cover Abdeckung	numer artykułu article number Artikelnummer
	330 mm				43114
	1000 mm			mleczna frosted opak	43115
	2000 mm	4 x LED strip max. 10 mm	profil: anodowany profile: anodized Profil: eloxiert		43116
	330 mm	3 x LED strip max. 12 mm			43135
	1000 mm			przezroczysta transparent	43136
	2000 mm				43137

PL **Komplet do budowy opraw sufitowych.** Nie zawiera źródeł światła LED oraz zasilacza!

Komora z przestrzenią na zasilacz wyposażona jest w płytke montażową służącą do bezpiecznego mocowania zasilacza, zrywki i innych elementów.  
Zestaw zawiera: profil IMET, profil BOX-Z, 2 zaślepki, osłona, płytka montażowa, pręty z tworzywa, klucze imbusowe, dociski.

EN **Set for construction of ceiling fixtures.** Does not include LED lights and power supply.

Compartment with space for the power supply is equipped with a mounting plate for the secure mounting of the power supply, electric terminal and other items.  
Set contains: IMET profile, BOX-Z profile, 2 end caps, cover, mounting plate, plastic rods, allen keys, pressure screws.

DE **Set zum Bau einer Deckenleuchte.** Leergehäuse ohne Netzgerät!

Der Platz für die Stromversorgung und die Anschlußklemmen ist vorhanden.

Set Inhalt: Profil IMET, Profil BOX-Z, 2 Endkappen, Abdeckung, Montageplatte für Spannungsversorgung, Plastik Verbindungsstifte, Inbusschlüssel, Verschraubung.



