

Link to the product: <https://stair-lighting.com/profile-led-box-with-space-for-power-supply-p-1113.html>



## Profile LED BOX with space for power supply

Price	<b>42.74 Euro</b>
Availability	<b>Available</b>
Shipping time	<b>4 days</b>
Number	<b>1113</b>
Manufacturer	<b>KLUS</b>

### Product description

#### Important Information

The purchase a piece in the store means the purchase 1 linear meter of the profile or cover

If you want to buy a profile that has a length of 2 meters you have to buy 2 pieces, 3 meters you have to buy 3 pieces, and the multitude of quantity when ordering.

The total length of the aluminum profile or the panel to the profile - is the total quantity of the piece number that was bought in the store.

The choice of the appropriate shipping method will take place at the end of the order process.

[The details of the shipping method and packaging of the aluminum profiles you will find here \(click in the link\)](#)

The product you have selected contains only - aluminum profile - does not include the accessories located in the Accessories tab.

Additional accessories like covers, end caps, electricity conductive end cap, mounting bracket, fasteners, mounting springs, proximity switch, micro switch, mounting system and others are available under "Accessories".

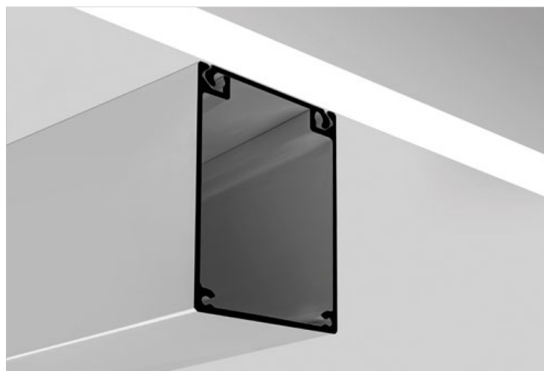
If you are interested in longer lengths than one meter, write to us we will quote the delivery cost to you. Transport companies expect additional charges for long shipments.

For each country is different maximum length of the profile that we can send. It does not depend on us only by courier. We also do service cutting aluminum profiles to the indicated size - write or call get comprehensive information.

Profile z komorą na zasilacz /  
Profile mit Raum für Netzgeräte

## BOX

REF. 00640



Duża przestrzeń dla przyłącza zasilania i elementów elektronicznych.

Prosty montaż i demontaż.

### PRZEZNACZENIE PRODUKTU:

- do podwieszania opraw do sufitów, ukrywa przyłącze prądowe, zasilacz i inne urządzenia elektroniczne.

### MONTAŻ:

- na listwie montażowej, przytwierdzonej do powierzchni wkrętami.

### DODATKOWE INFORMACJE:

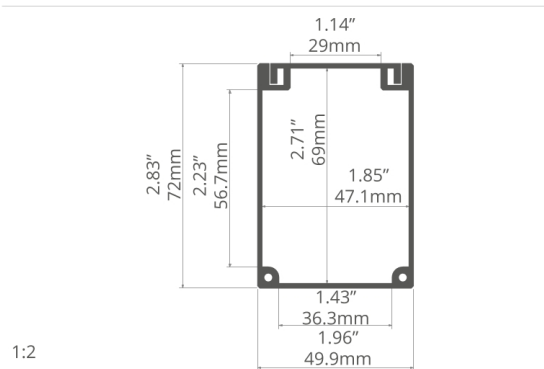
- profil można wykorzystać także do montażu na pionowych ścianach oraz do przykręcania opraw oświetleniowych bezpośrednio do niego.

### profil / Profil

długość / Länge	wykończenie powierzchni / Oberfläche	numer artykułu / Artikelnummer
1 m	● Srebrny anodowany / Silber eloxiert	<b>00640ANODA_1</b>
2 m		<b>00640ANODA_2</b>
3 m		<b>00640ANODA_3</b>

### akcesoria / Zubehör

zaśleпки szare / graue Endkappen	zawieszki / Befestigungen	zestawy mocowań / Befestigungssätze	inne akcesoria / sonstiges Zubehör
BOX <b>00314</b>	P-BOX-Z <b>42554</b> W-BOX-Z <b>00643</b>	M15 ZESTAW MOCO- WAŃ /BEFESTIGUNGS <b>42614</b> SET	DŁAWNICA / KABELVERSCHRAU- BUNG 24x1.6 <b>00820</b> DŁAWNICA 8.8X1.2 / KABELVERSCHRAU- BUNG 8.8X1.2 <b>00802</b> WKŁADKA MONTA- ŻOWA 45 / MONTA- GEEINSATZ <b>70011</b>



1:2



Grosser Raum für den Stromanschluss und elektronische Komponenten.

Einfache Montage und Demontage.

### ANWENDUNG

- für Hängen der Leuchten unter der Decke, verdeckt den Stromanschluss, das Netzteil und andere elektronische Komponenten

### MONTAGE

- auf der mit Schrauben verschraubten Montageleiste

### ZUSÄTZLICHE INFORMATIONEN

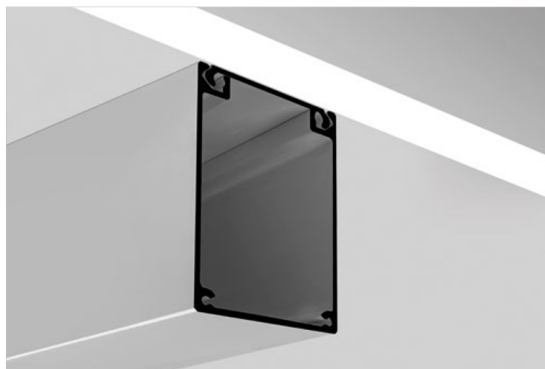
- das Profil kann auch zur Montage an senkrechten Wänden und zum direkten Verschrauben von Leuchten verwendet werden



Extrusions with space for power supply /  
Perfiles con alojamiento para suministro de corriente

## BOX

REF. 00640



Large space for power connection  
and electronic components.  
Easy assembly and disassembly.

### APPLICATION

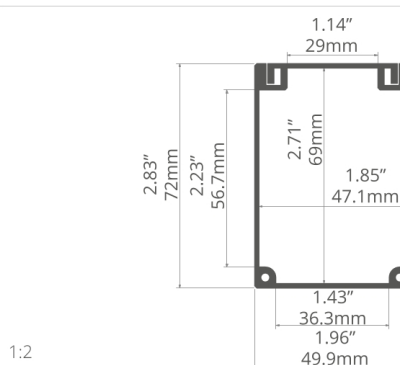
- for suspending lighting fixtures from the ceiling, hides the power connection, power supply and other electronic devices.

### ASSEMBLY

- on a mounting strip, fixed to the surface with screws.

### ADDITIONAL INFORMATION

- the extrusion can also be used for mounting on vertical walls and for mounting lighting fixtures directly to it.



1:2



Amplio espacio para conexión eléctrica  
y componentes electrónicos.  
Fácil montaje y desmontaje.

### APLICACIÓN

- para suspender los accesorios de iluminación al techo, esconde la conexión de corriente, suministro de corriente y otros dispositivos electrónicos.

### MONTAJE

- sobre una tira de montaje, fijada a la superficie con tornillos.

### INFORMACIÓN ADICIONAL

- el perfil se puede también utilizar para montar en las paredes verticales y para montar las luminarias directamente a él.

### extrusion / perfil

length / longitud	surface finish / terminado de superficie	reference number / número de artículo
39.4" / 1 m	● Silver anodized / Ánodo de plata	<b>00640ANODA_1</b>
78.7" / 2 m		<b>00640ANODA_2</b>
118" / 3 m		<b>00640ANODA_3</b>

### accessories / accesorios

grey end caps / tapas finales gris	fastener / soportes	mounting sets / sets de montaje	other accessories / otros accesorios
BOX <b>00314</b>	P-BOX-Z <b>42554</b>	M15 FASTENER SET / SETS DE MONTAJE <b>42614</b>	8.8x1.2 GLAND / GLÁNDULA <b>00802</b>
	W-BOX-Z <b>00643</b>		24x1.6 GLAND / GLÁNDULA <b>00820</b>
			MOUNTING IN- SERT 45 / INSER- TO DE MONTAJE <b>70011</b>

Profile LED BOX with space for the power supply has been made of high-quality aluminum, subjected to double anodizing. It consists of two elements: an element U, which is a main portion in which the assembly of electronic equipment (function of the body), and the element Z, i.e., the part that is attached to the substrate (the function strip assembly). Both elements are joined using a special annex will (to "click"). The combination has an additional protection bars which are made of a special plastic.

The most common profile is used to design and manufacture a variety of lighting fixtures, not just those that are mounted on the ceiling, but also those intended for wall mounting. Extremely refined profile design allows for precise hide the entire electronic equipment inside, so you get a wide range of applications, as well as elegant look. Hidden electronic gear is used to power low-voltage light sources based on LED technology.

Profile BOX creates an aesthetic and precise housing power supplies and connecting current 110-230V dedicated to lighting fixtures. It allows the construction of the finished luminaires LED as hanging lamps, hanging down to the desired height, sconces and many others.

Installation profile is very simple and is explained step-by-step instructions, so that everyone will be able to carry out. Profile can be attached to both surfaces of ceilings and walls, as well as many other places. Slot power is prepared to work primarily with lighting fixtures, for attaching thereto, or to a bar design. It is ideal for the construction of luminaires LED, in many dimensional and compositional possibilities.

Profile are dedicated to the polypropylene caps and special hangers, which are necessary for electrical connection and the mechanical elements of the other luminaire. Covers provide an aesthetic finish profile and cool and protect BOX profile before decomposition. In addition, a protective function, preventing the ingress of dust and other unwanted objects.

For mounting profile is also used round bars with a diameter of 4mm, which protect against falling caps.

All the necessary components for installation profile, you can easily find on our website under "Accessories".

We invite you to familiarize yourself with our offer.

BOX profile consists of two independent sections: from the box - U forming the body and the box function - Z forming a closing function. BOX - With the box set - U mounted on the latch. ("Click")

Purpose:

Profile BOX is an aesthetic enclosure power supplies and electricity connection of 220 V for lighting fixtures. Includes mounting surface feature ceilings, walls, etc.. Boxing Supply is prepared to work with dedicated luminaires, attaching the bars or directly to its construction.

BOX can provide the basis for the construction of LED lighting fixtures in a variety of configurations dimensional and compositional.

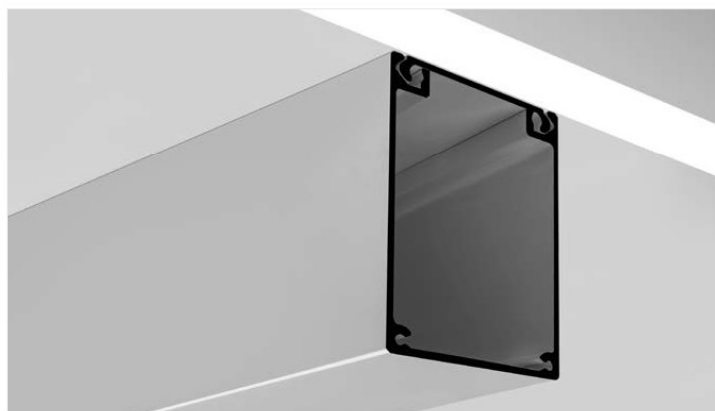
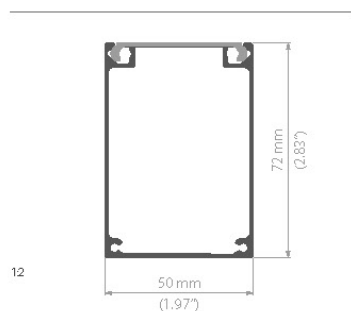
0.9 / Profile z komorą na zasilacz / Extrusions with space to conceal power supplies / Profile mit raum für Netzgeräte

## BOX

PL / Komplet profili do **budowy estetycznej obudowy o większych gabarytach dla zasilacza, sterowników oraz przyłącza prądu 230V.**

EN / A set of extrusions for **construction of power supply housings of larger dimensions**, controllers and 230V current connection.

DE / Ein Satz der Profile zum **Bau der ästhetischen Abdeckung, von größeren Abmessungen für das Netzgerät, Steuerungseinheiten und Stromanschluss 230 V.**



### BOX

długość length Länge	wykończenie powierzchni surface finish Oberfläche	numer artykułu article number Artikelnummer
1m (standard) 2m (standard) 3m (standard) 3 - 6m *	● anodowany / anodized / eloxiert	00640ANODA

### ZASŁEPKI / END CAP / ENDKAPPEN

	BOX	zasłlepka podstawowa / basic end cap / Endklappe	PP	● jasno szara / light gray / hellgrau	00314
---	-----	--	----	---------------------------------------	-------

### AKCESORIA MONTAŻOWE / MOUNTING ACCESSORIES / MOUNTING ACCESSORIES

	zawieszka wzdłużna do boxu zasilania / Longitudinal Fastener for BOX Profile / Die Längsaufhängung der Versorgungsbox	stal / steel / Edelstahl	00643
	zawieszka poprzeczna do boxu zasilania / Transverse Fastener for BOX Profile / Die Längsaufhängung der Versorgungsbox	stal / steel / Edelstahl	42554
	MULTIBO zawieszka / fastener / Abhängung	stal / steel / Edelstahl	42613

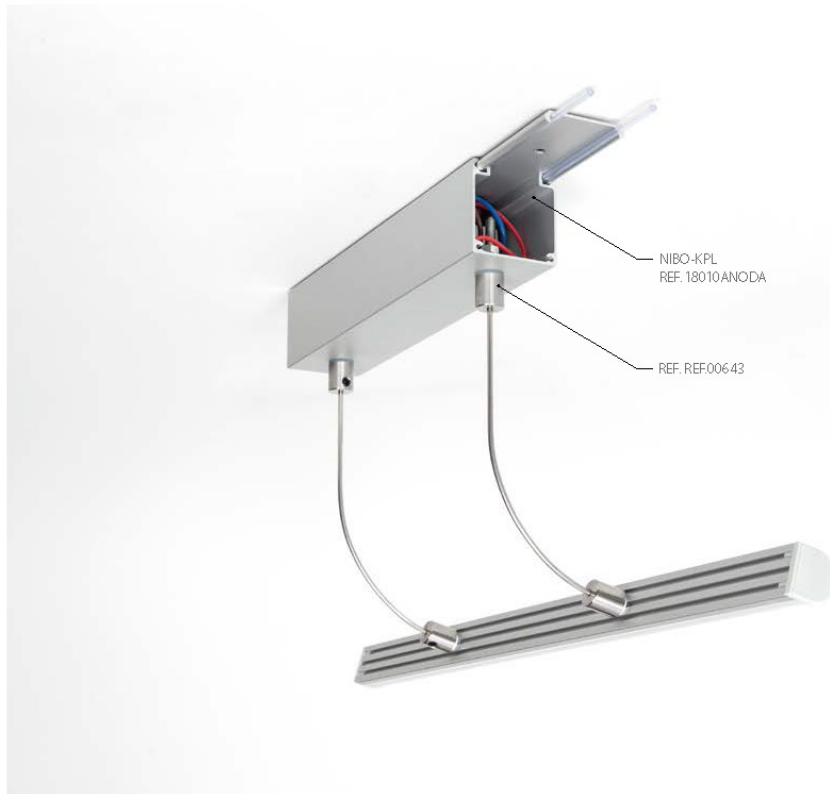
\* Na specjalne zamówienie / Special order / Sonderbestellung.

\* Dostępne po uzgodnieniu z działem handlowym firmy KLUŚ / Available by arrangement with sales department of KLUŚ / verfügbar nach Absprache mit dem Vertrieb von KLUŚ.

NIBO-KPL BOX KPL.



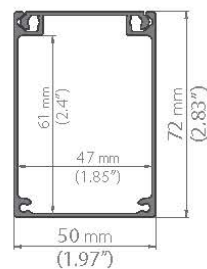
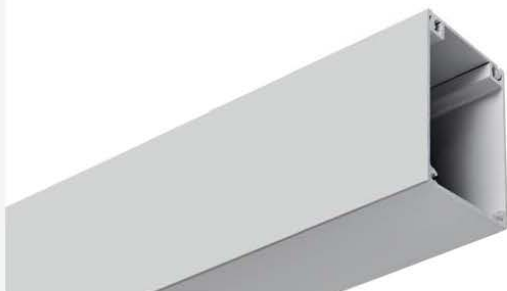
NIBO-KPL BOX KPL.





## BOX KPL. Przestrzeń na zasilacz Space to conceal power supply Raum für Verkabelung und Netzgerät

91



BOX KPL. PROFIL	długość length Länge	wykończenie powierzchni surface finish Oberfläche	numer artykułu article number Artikelnummer
	1m (standard) 2m (standard) 2 - 6m *	anodowany anodized eloxiert	00640

### BOX - ZAŚLEPKA / END CAP / ENDKAPPE



### ZAWIESZKI / FASTENERS / BEFESTIGUNG



zawieszka wzdłużna do boxu zasilania  
Longitudinal Fastener for BOX Profile  
Längsbefestigung für BOX Profile



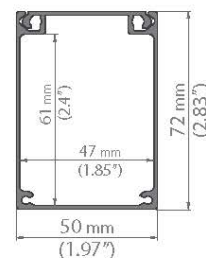
zawieszka poprzeczna do boxu zasilania  
Transverse Fastener for BOX Profile  
Querbefestigung für BOX Profile




\* Na specjalne zamówienie / Special order / Sonderbestellung..

## BOXSET

147



BOXSET	długość length Länge	wykończenie powierzchni surface finish Oberfläche	numer artykułu article number Artikelnummer
	330 mm	anodowany anodized eloxiert	43126
	1000 mm		43127
	2000 mm		43128

**PL Komplet do budowy opraw oświetleniowych.** Nie zawiera zasilacza!  
Korpus oprawy (BOX U) mocuje się do profilu montażowego (BOX Z) na „klik” i zabezpiecza prętami z tworzywa oraz zaślepkami, co daje trwałe i silne połączenie obydwu tych części. Komora zasilania wyposażona jest w płytkę montażową służącą do bezpiecznego mocowania zasilacza, zrywki i innych elementów. Zestaw zawiera: profil BOX, profil BOX-Z, 2 zaślepki, płytkę montażową, pręty z tworzywa, klucze imbusowe, dociski.

**EN Set for construction of lighting fixtures.** Does not include the power supply!  
The fixture (BOX U) “snaps” into the mounting profile (BOX Z) and is secured with plastic rods and end caps which give a durable and strong connection from both of these parts. Compartment with space for the power supply is equipped with a mounting plate for the secure mounting of the power supply, electric terminal and other items. Set contains: BOX profile, BOX-Z profile, 2 end caps, mounting plate, plastic rods, allen keys, pressure screws.

**DE Set zum Bau einer Leuchte.** Leergehäuse ohne Netzgerät.  
Die Leuchte wird in das Profil eingeschnappt und mit den Kunststoff stäben und Endkappen gesichert. Set Inhalt: Profil BOX, Profil BOX-Z, 2 Endkappen, Montageplatte für Spannungsversorgung, Plastik Verbindungsstifte, Inbusschlüssel, Verschraubung.

### ZAWIESZKI / FASTENERS / BEFESTIGUNG



00643  
zawieszka wzdłużna do boxu zasilania  
Longitudinal Fastener for BOX Profile  
Längsbefestigung für BOX Profile



42554  
zawieszka poprzeczna do boxu zasilania  
Transverse Fastener for BOX Profile  
Querbefestigung für BOX Profile



