

Link to the product: <https://stair-lighting.com/profiel-test-74-p-1402.html>

Profiel TEST-74

Price	8.34 Euro
Availability	Available
Shipping time	5 days
Number	1402
Manufacturer	KLUS

Product description

Important Information

The purchase a piece in the store means the purchase 1 linear meter of the profile or cover

If you want to buy a profile that has a length of 2 meters you have to buy 2 pieces, 3 meters you have to buy 3 pieces, and the multitude of quantity when ordering.

The total length of the aluminum profile or the panel to the profile - is the total quantity of the piece number that was bought in the store.

The choice of the appropriate shipping method will take place at the end of the order process.

[The details of the shipping method and packaging of the aluminum profiles you will find here \(click in the link\)](#)

The product you have selected contains only - aluminum profile - does not include the accessories located in the Accessories tab.

Additional accessories like covers, end caps, electricity conductive end cap, mounting bracket, fasteners, mounting springs, proximity switch, micro switch, mounting system and others are available under "Accessories".

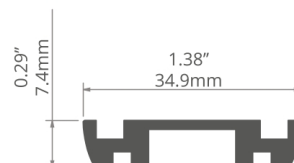
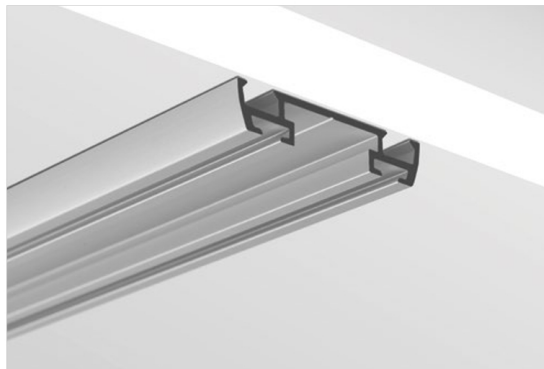
If you are interested in longer lengths than one meter, write to us we will quote the delivery cost to you. Transport companies expect additional charges for long shipments.

For each country is different maximum length of the profile that we can send. It does not depend on us only by courier. We also do service cutting aluminum profiles to the indicated size - write or call get comprehensive information.

Profile uniwersalne do montażu na powierzchni, wbudowania lub podwieszenia /
Universalprofile zur Aufputz, Unterputzmontage oder zum Abhängen

TEST-74

REF. W4507



Uproszczenie montażu profilu STOS.

PRZEZNACZENIE PRODUKTU:

- listwa montażowa dla profilu STOS. Tworzy przepust dla przewodów zasilających (max \varnothing 6 mm).

MONTAŻ:

- za pomocą wkrętów odpowiednio dobranych do rodzaju podłoża.



Vereinfachung der Montage des Profils STOS.

ANWENDUNG

- die Montageleiste für das Profil STOS. Sie bildet eine Durchführung für Versorgungskabel (max. \varnothing 6 mm)

MONTAGE

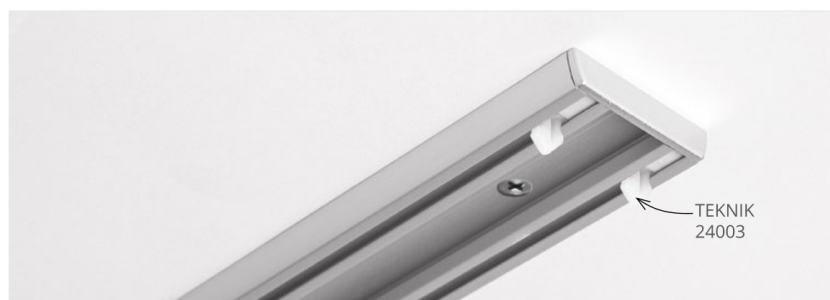
- mit Schrauben angepasst an den Untergrund

profil / Profil

długość / Länge	wykończenie powierzchni / Oberfläche	numer artykułu / Artikelnummer
1 m	● Srebrny anodowany / Silber eloxiert	W4507ANODA_1
2 m		W4507ANODA_2
3 m		W4507ANODA_3

akcesoria / Zubehör

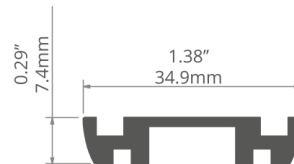
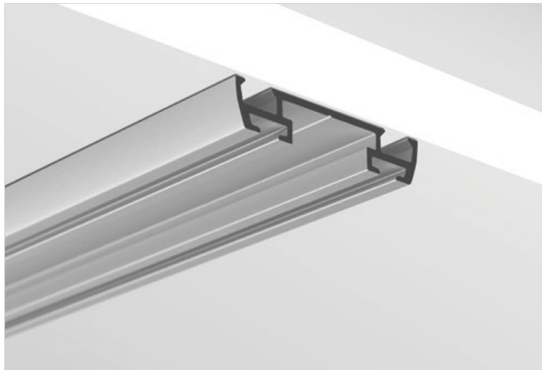
zaślepki szare / graue Endkappen	
TEST-74	24039
zaślepki metalizowane / metallisierte Endkappen	
TEST-74	24054
zawieszki / Befestigungen	
PUSZ-PRET-MR	42252
PUSZ-LIN-MR	42258
inne akcesoria / sonstiges Zubehör	
ZATRZASK TEKNIK / TEKNIK EINRASTER	24003
profil / Profil	
STOS-ALU	B4369



Universal Extrusions for surface mount, recessed or suspended applications /
Perfiles universales para aplicaciones de montaje en superficie, empotradas o suspendidas

TEST-74

REF. W4507



Simplifies mounting a dedicated STOS lighting fixture and provides space to conceal wires.

APPLICATION

- mounting of a dedicated lighting fixture with a cable gland, by snapping it into the mounting track.

ASSEMBLY

- on screws appropriately selected for the mounting surface.
- the dedicated lighting fixture is snapped into the mounting strip.

ADDITIONAL INFORMATION

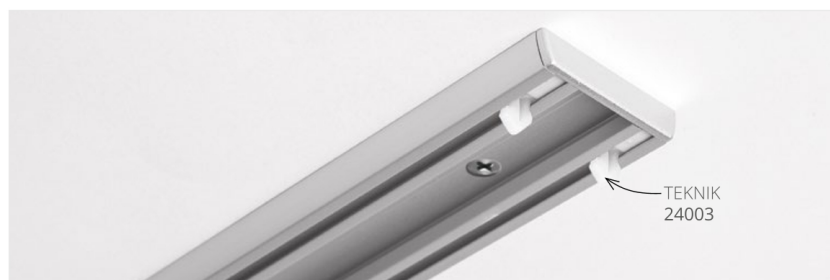
- the space inside the strip is (max \varnothing 0.27" / 6.2 mm).

extrusion / perfil

length / longitud	surface finish / terminado de superficie	reference number / número de artículo
39.4" / 1 m	● Silver anodized / Ánodo de plata	W4507ANODA_1
78.7" / 2 m		W4507ANODA_2
118" / 3 m		W4507ANODA_3

accessories / accesorios

grey end caps / tapas finales gris	
TEST-74	24039
metalized end caps / tapas finales metalizados	
TEST-74	24054
fastener / soportes	
PUSZ-PRET-MR	42252
PUSZ-LIN-MR	42258
other accessories / otros accesorios	
TEKNIK LATCH / CLIP	24003
extrusions / perfiles	
STOS-ALU	B4369



Profile TEST-74 is having 7,4mm 34,8mm height and width of the strip mounting dedicated profile PILE. Each perfectionist is aware of how much the role of details. When the mounting operation of both sections will be completed within the build-up channel the right height, so that you will carry wires of max. fi 6mm which will make will be in a skillful manner hidden and become invisible to the eye.

The aluminum strip is used in enabling installation in the profile STOS. As a result, installation is much easier and faster.

There are two versions of the product. One is a low strip TEST-36, which increases the set (bar + profile) of 3.6 mm and a second strip higher TEST-74 which increases set about twice as much as terminal TEST-36 (exactly 7.4mm).

Everyone knows how complicated it can be to mount some elements, but does not apply to this case. Installation profile STOS strip TEST-74 is very simple and is done using clips TEKNIK to be set in pairs. It should adhere to the principle, which says that snaps used as 20cm to the whole design more durable and served for a long time.

As for the additional elements to profile the TEST-74 is equipped with its own cap, which is complementary to the form of caps PILE. These are standard, as well as metallized polypropylene caps, which are complement the whole.

To attach the strip TEST-74 you need to choose suitable for this purpose substrate, and then select dedicated to a specific ground screws, which are generally available on the market, they can also be found in the "Accessories".

A place in which to drill the holes for the screws is determined by a special groove in the inner part of the profile. It must first be noted that the substrate to which we attach the strip was flat, otherwise its attachment can be difficult, but not impossible. Once on the ground there are significant inequalities are mounting screws should be placed in such places, where the profile is adjacent to the ground, simply speaking, visible to the naked eye bulges.

The profile has been made of anodized material, which makes it subject to corrosion processes and is protected against all kinds of mechanical damage.

Essential elements of the fastening system allowing easy installation, with optional accessories can be found on our website under "Accessories".

We invite you to familiarize yourself with our offer.

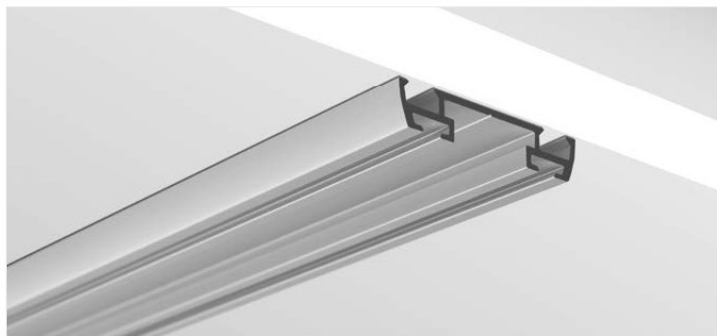
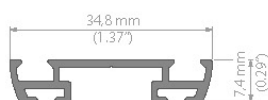
0.1 / Profile do montażu na powierzchni / Surface mount extrusions / Profile zur Montage auf der Oberfläche

TEST-74

PL / **Listwa montażowa** dla profilu STOS. Tworzy przepust dla przewodów zasilających (max \varnothing 6 mm).

EN / **Mounting strip** for STOS extrusion. Creates a cableway for power supply cables (max \varnothing 6 mm).

DE / **Die Montageleiste** zum Profil STOS. Sie bildet eine Durchführung für Versorgungsleitungen (max. \varnothing 6 mm).




TEST-74

dlugość length Länge	wykończenie powierzchni surface finish Oberfläche	numer artykułu article number Artikelnummer
1m (standard)	● anodowany / anodized / eloxiert	W4507ANODA
2m (standard)		
3m (standard)		
3 - 6m *		

* Na specjalne zamówienie / Special order / Sonderbestellung.

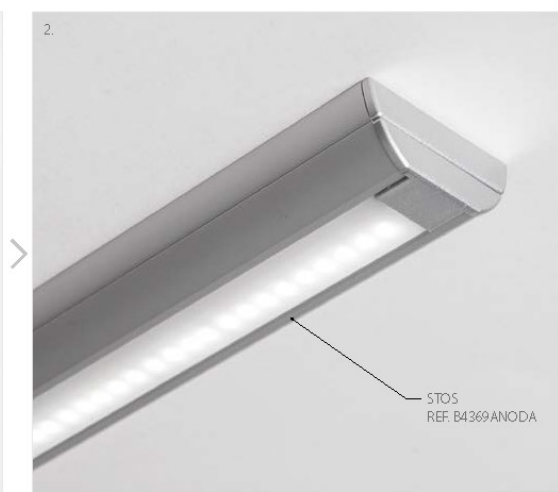
akcesoria / accessories / zubehör

ZAŚLEPKI / END CAP / ENDKAPPEN

 TEST-74	zaślepka podstawowa / basic end cap / Endkappe	PP	jasno szara / light gray / hellgrau	24039
		PP	metalizowana / metalised / metallisiert	24054

AKCESORIA MONTAŻOWE / MOUNTING ACCESSORIES / MOUNTING ACCESSORIES

	zatrząsek TEKNIK / TEKNIK clip / TEKNIK clip	POM - tworzywo sztuczne / plastic / Kunststoff		24003
---	--	--	--	-------



TEST Profil mocujący Mounting profile Befestigungsprofile

62



TEST-36 PROFIL

długość
length
Länge

wykończenie powierzchni
surface finish
Oberfläche

numer artykułu
article number
Artikelnummer

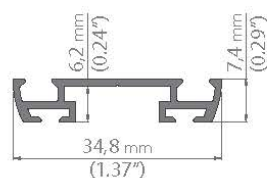
1m (standard)
2m (standard)
3m *
3 - 6m **

anodowany
anodized
eloxiert

B6639

TEST-36 - ZAŚLEPKA / END CAP / ENDKAPPE

TEKNIK - ZATRZASK / CLIP / VERRIEGELUNG



TEST-74 PROFIL

długość
length
Länge

wykończenie powierzchni
surface finish
Oberfläche

numer artykułu
article number
Artikelnummer

1m (standard)
2m (standard)
3m *
3 - 6m **

anodowany
anodized
eloxiert

W-607

TEST-74 - ZAŚLEPKA / END CAP / ENDKAPPE

TEKNIK - ZATRZASK / CLIP / VERRIEGELUNG



LED Profile

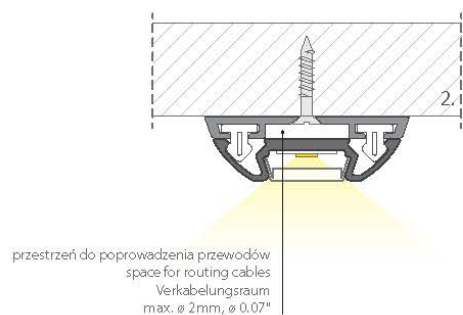
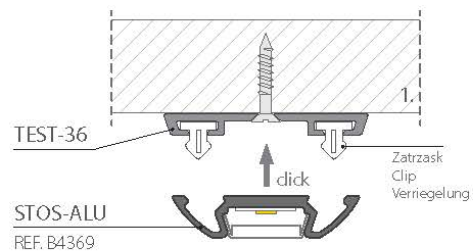
* Dostępne po uzgodnieniu z działem handlowym / Available by arrangement with sales department / verfügbar nach Absprache mit dem Vertrieb.

** Na specjalne zamówienie / Special order / Sonderbestellung.

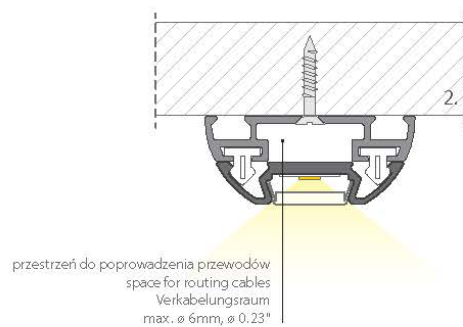
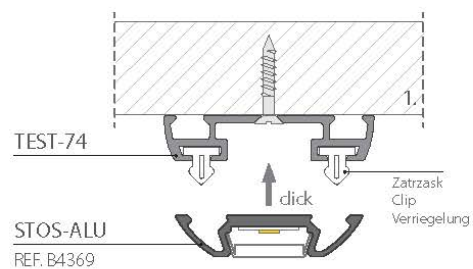
TEST

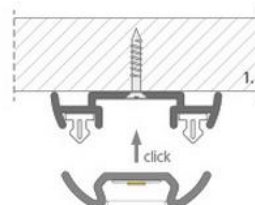
63

TEST-36

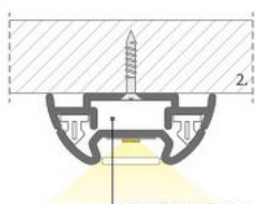


TEST-74





PROFIL TEST-74



przestrzeń do poprowadzenia
przewodów maks. \varnothing 6mm
space for routing cables
max. \varnothing 6mm (0.23")

PROFIL TEST-74

