

Link to the product: <https://stair-lighting.com/profiel-led-tese-p-1462.html>

Profiel LED TESE

Price	27.85 Euro
Availability	Available
Shipping time	5 days
Number	1462
Manufacturer	KLUS

Product description

Important Information

The purchase a piece in the store means the purchase 1 linear meter of the profile or cover

If you want to buy a profile that has a length of 2 meters you have to buy 2 pieces, 3 meters you have to buy 3 pieces, and the multitude of quantity when ordering.

The total length of the aluminum profile or the panel to the profile - is the total quantity of the piece number that was bought in the store.

The choice of the appropriate shipping method will take place at the end of the order process.

[The details of the shipping method and packaging of the aluminum profiles you will find here \(click in the link\)](#)

Price for 1 meter length profile - no cover and end caps.

The product you have selected contains only - aluminum profile - does not include the accessories located in the Accessories tab.

Additional accessories like covers, end caps, electricity conductive end cap, mounting bracket, fasteners, mounting springs, proximity switch, micro switch, mounting system and others are available under "Accessories".

If you are interested in longer lengths than one meter, write to us we will quote the delivery cost to you. Transport companies expect additional charges for long shipments.

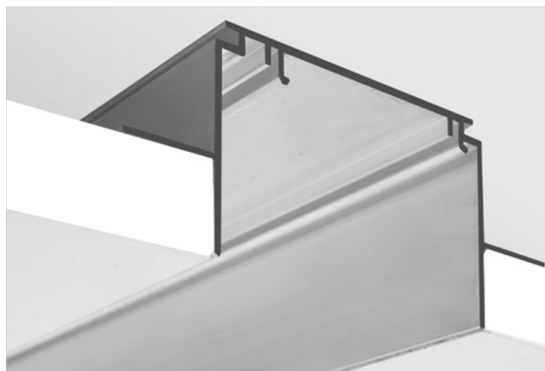
For each country is different maximum length of the profile that we can send. It does not depend on us only by courier.

We also do service cutting aluminum profiles to the indicated size - write or call get comprehensive information.

Profile do budowy opraw LED o wysokiej wydajności świetlnej /
Profile von hoher Lichtausbeute, Lichtlinie

TESE

REF. 18021V1



Listwa montażowa tworząca precyzyjny wpust w suficie kartonowo-gipsowym.

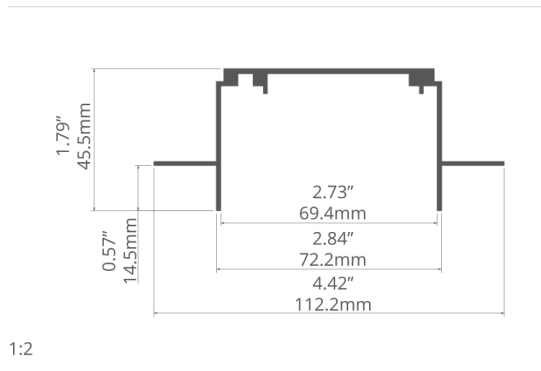
Możliwość tworzenia linii światła z widoczną krawędzią aluminiową o minimalnej szerokości.

PRZEZNACZENIE PRODUKTU:

- do tworzenia łatwo serwisowalnych opraw wbudowanych.

MONTAŻ:

- za pomocą wkrętów odpowiednio dobranych do rodzaju podłoża.



1:2



Montageleiste, die eine präzise Nut in der Gipskartondecke bildet.

Lichtlinie mit dem sichtbaren, minimal breiten Alurand möglich.

ANWENDUNG

- für Wartungsarme Einbauleuchten eingebaute Leuchten

MONTAGE

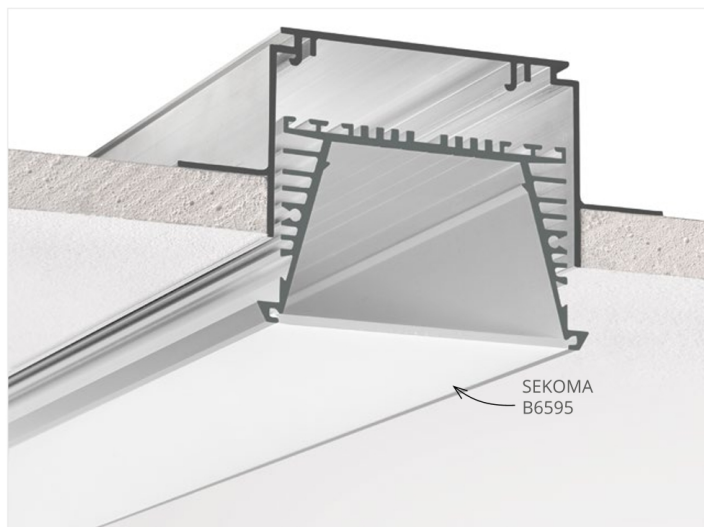
- mit Schrauben angepasst an den Untergrund

profil / Profil

długość / Länge	wykończenie powierzchni / Oberfläche	numer artykułu / Artikelnummer
1 m	● Nieanodowany (surowe aluminium) / Nicht eloxiert (Aluminum Natur)	18021V1NA_1
2 m		18021V1NA_2
3 m		18021V1NA_3

akcesoria / Zubehör

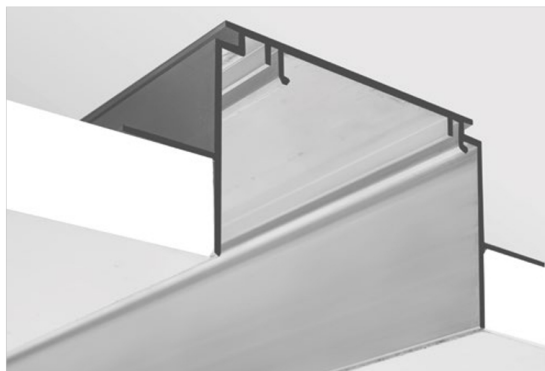
zaślepki szare / graue Endkappen	
TESE	24047
sprężyny mocujące / Befestigungsfedern	
BLOK	42731
profil / Profil	
SEKOMA	B6595



Extrusions for assembling High Output LED Fixtures /
Perfiles grandes arquitectónicos de alta luminosidad, línea de luz

TESE

REF. 18021V1



The mounting strip forms a precise groove in drywall.
Possible to obtain a line of light with a visible aluminum
edge of minimum width.
Easy servicing, snapped in.

APPLICATION

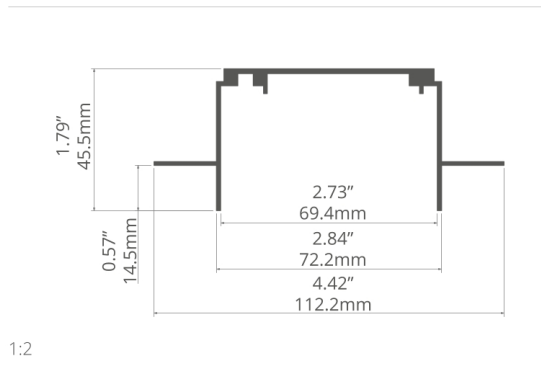
- for creating easily serviceable built-in lighting fixtures.

ASSEMBLY

- with screws appropriately selected for the mounting surface.

ADDITIONAL INFORMATION

- for (1/2" / 12.5 mm) thick drywall.



La tira de montaje forma una ranura precisa
en paneles de yeso.
Capacidad para crear una línea de luz con un borde
de aluminio visible de ancho mínimo.
Fácil servicio, instalación clic.

APLICACIÓN

- para la creación de luminarias incorporados fácilmente
reparables.

MONTAJE

- con tornillos debidamente seleccionados para la superficie
de montaje.

INFORMACIÓN ADICIONAL

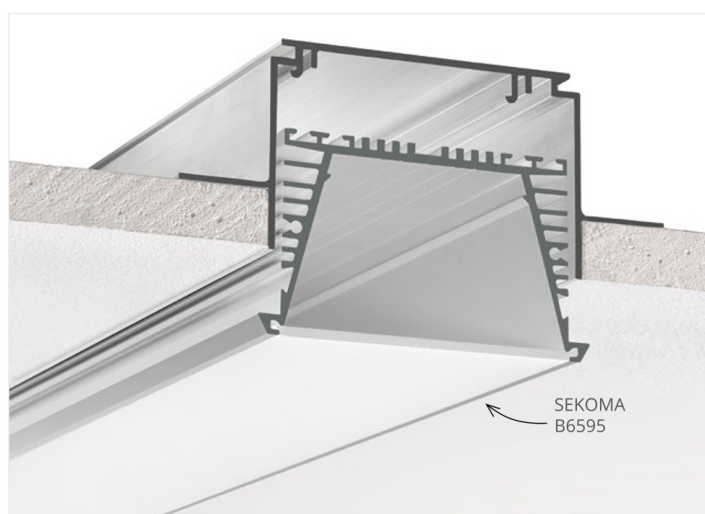
- para paneles de yeso de (1/2" / 12.5 mm) de grosor.

extrusion / perfil

length / longitud	surface finish / terminado de superficie	reference number / número de artículo
39.4" / 1 m	● Non anodized (raw) / Aluminio crudo (no anodizado)	18021V1NA_1
78.7" / 2 m		18021V1NA_2
118" / 3 m		18021V1NA_3

accessories / accesorios

grey end caps / tapas finales gris	
TESE	24047
mounting springs / resortes de montaje	
BLOK	42731
extrusions / perfiles	
SEKOMA	B6595



Mounting profile TESE is made of aluminum and has not been subjected to the process of anodizing. From TES-16 variant differs height profile on its side wings, which is on the inside based on the plasterboard to which it is mounted. In the case of profile TESE this dimension is 12.5 mm and the profile TES-16, as the name suggests 15.9 mm. Technical Profile TESE fixed to the load-bearing structure of walls and ceilings by screwing them so. flange profile. The distance from the top of the profile flange shall be at a standard thickness of the gypsum cardboard.

Adjusting to other profiles

Inside profile TESE, through dedicated springs BLOCK, you can put profile architectural SEKOMA, also made of aluminum and designed to create a broad line of strong light. BLOCK springs are complete profile, and when inserted in special grooves, so-called. click both profiles are quickly and securely connected.

Why use LED strips?

The popularity of LED strips comes with numerous advantages, which have LEDs attached to the straps. LEDs are the most energy-efficient source of lighting offered on the market, they have called. efficiency. at 80-95%. Durability LED lighting module is an average of 50 thousand. working hours, which can give up to 25 years of use. The LED contains no moving parts and glass, making it resistant to shock and impact, which rozbiťby an ordinary light bulb. LED technology can achieve virtually any light color (RGBW). LEDs achieve full brightness within microseconds, work with dimmers. They have a low emission of heat, check the objects sensitive to heat radiation, which must be kept stable temperature. Production of LED does not require the use of metals hazardous to the environment.

The importance of the use of aluminum with LED lighting

Metal has a low weight, is durable, malleable and easy to process, further luminous it conducts heat and electricity. That requires heat sinks to lower the temperature, which generate LEDs. Together with the luminaire optimizes the dispersion of heat dissipation and optimizes its level. The heat fact will have a significant impact on the life of the light source and the emitted light beam.

Accessories dedicated profile

- Polypropylene caps TESE, which did not let in light and protect the LED strip against the ingress of any kind of dirt. Dirt could reduce the performance and durability of light sources.
- BLOCK steel springs.

Comments

Monter after mounting the housing to the terminal should indicate the direction of dismantling.

Assembly profile mounted must maintain a straight line and the cross-sectional shape in the event of deformation of the assembly of the lighting fixture may not be possible.

During installation you are required prior supply power cables to the profile.

Power supply units are placed in bulk or thickness of the plasterboard.

Profile for installation in places where water is not available

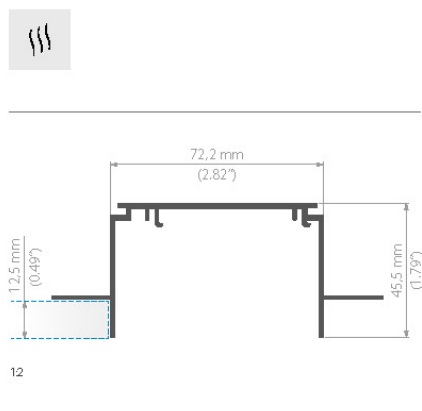
0.7 / Profile o dużej wydajności świetlnej, linia światła / High light output extrusions, line of light / Profile von hoher Lichtausbeute, Lichtlinie

TESE-KPL

PL / **Profil montażowy** do budowy precyzyjnych szczelin (wpustów) w płaszczyznach ścian i sufitów kartonowo-gipsowych (grubość 12.5mm). Dla profilu SEKOMA.

EN / **A mounting extrusion** for construction of precise grooves in the surfaces of drywall and gypsum walls and ceilings (12.5 mm thickness). For the SEKOMA extrusion.

DE / **Das Montageprofil** zum Bau der präzisen Spalten (Falzen) in den Wänden und Decken aus Kartongips (Dicke 12.5 mm). Für Profil SEKOMA.



TESE-KPL

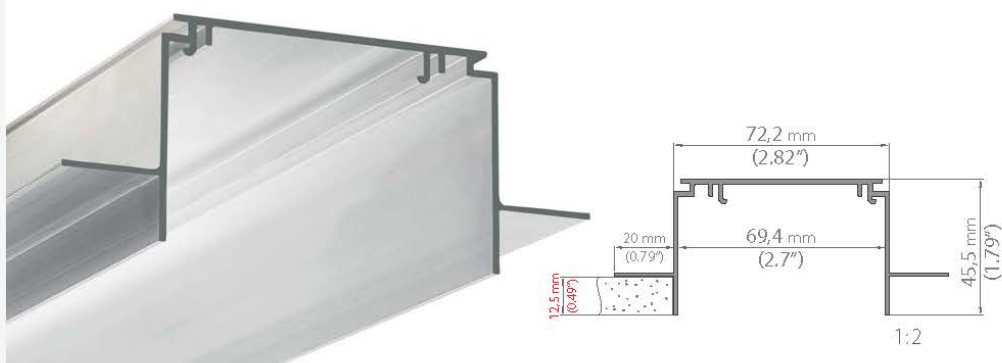
długość length Länge	wykończenie powierzchni surface finish Oberfläche	numer artykułu article number Artikelnummer
1m (standard) 2m (standard) 3m (standard) 3-6m *	● nieanodowany (surowe aluminium) / non anodized (raw - aluminum) / nicht eloxiert (Aluminum Natur)	18021NA

akcesoria / accessories / zubehör

ZASŁEPKI / END CAP / ENDKAPPEN

	TESE	zaślepka podstawowa / basic end cap / Endkappe	PP	● jasno szara / light gray / hellgrau	24047
---	------	--	----	---------------------------------------	-------

* Na specjalne zamówienie / Special order / Sonderbestellung.


TESE PROFIL

długość
length
Länge

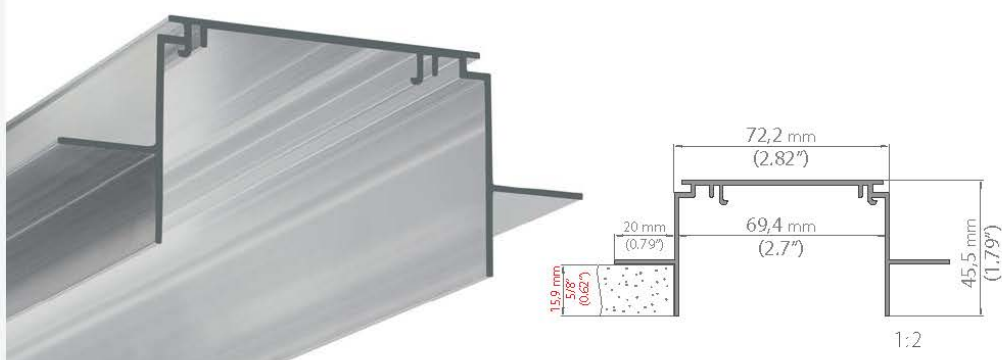
wykończenie powierzchni
surface finish
Oberfläche

numer artykułu
article number
Artikelnummer

1m (standard)
2m (standard)
3m *

nieanodowany (surowe aluminium)
non anodized (raw - aluminum)
nicht eloxiert (Aluminum Natur)

B6596


TES-16 PROFIL

długość
length
Länge

wykończenie powierzchni
surface finish
Oberfläche

numer artykułu
article number
Artikelnummer

1m (standard)
2m (standard)
3m *

nieanodowany (surowe aluminium)
non anodized (raw - aluminum)
nicht eloxiert (Aluminum Natur)

B6635

TESE - ZAŚLEPKA / END CAP / ENDKAPPE

24047

LED Profile

* Na specjalne zamówienie / Special order.

"SZER" profiles are designed to build LED fixtures of significant light output. The profile comes with BLOK springs, which allow you to connect TESPO KPL and SEPOD profiles. The width of such profiles allows a maximum of 4 LED strips of 10,8mm each. The profile comes with a dedicated frosted SZER cover which has very good light diffusing properties and light transmittance of 98%. Due to the cover and properly designed height of the profile you can obtain a line of light. A characteristic feature of SZER profiles are their big, aesthetically designed radiators which have effective heat dissipation properties. TESE KPL. – mounting track designed for making accurate slots (grooves) in the surfaces of walls and drywall ceilings and embedding fixtures based on the SEKOMA profile. This track is mounted to the structure of walls and drywall ceilings.

TESE KPL. mounting track is fixed with the SEKOMA profile by being snapped together, using a suitable lock and BLOK spring (included).

NOTE!

- After snapping the fixture into the mounting track, the fitter should mark the direction of uncliccking, without disturbing the aesthetics of the fixture.
- TESE KPL. mounting track fixed to a wall, ceiling, etc. must maintain a straight line and cross-sectional shape. Excessive bending of the track, crushing, or unbending its walls will prevent proper mounting of the fixture. - The profiles are dedicated for use in places not exposed