

Link to the product: <https://stair-lighting.com/profiel-led-stos-p-628.html>

Profiel LED STOS

Price	8.40 Euro
Availability	Available
Shipping time	3 days
Number	628
Manufacturer	KLUS

Product description

Important Information

The purchase a piece in the store means the purchase 1 linear meter of the profile or cover

If you want to buy a profile that has a length of 2 meters you have to buy 2 pieces, 3 meters you have to buy 3 pieces, and the multitude of quantity when ordering.

The total length of the aluminum profile or the panel to the profile - is the total quantity of the piece number that was bought in the store.

The choice of the appropriate shipping method will take place at the end of the order process.

[The details of the shipping method and packaging of the aluminum profiles you will find here \(click in the link\)](#)

Aluminum Profile LED STOS

The product you have selected contains only - aluminum profile - does not include the accessories located in the Accessories tab.

Additional accessories like covers, end caps, electricity conductive end cap, mounting bracket, fasteners, mounting springs, proximity switch, micro switch, mounting system and others are available under "Accessories".

If you are interested in longer lengths than one meter, write to us we will quote the delivery cost to you. Transport companies expect additional charges for long shipments.

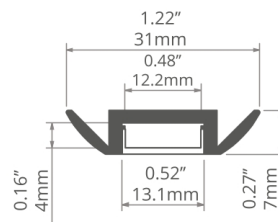
For each country is different maximum length of the profile that we can send. It does not depend on us only by courier.

We also do service cutting aluminum profiles to the indicated size - write or call get comprehensive information.

Profile uniwersalne do montażu na powierzchni, wbudowania lub podwieszenia /
Universalprofile zur Aufputz, Unterputzmontage oder zum Abhängen

STOS-ALU

REF. B4369



Prosta konstrukcja i funkcjonalność.

PRZEZNACZENIE PRODUKTU:

- do montażu powierzchniowego w istniejących meblach, zabudowach.

MONTAŻ:

- za pomocą wkrętów, pod paskiem LED, za pomocą wkrętów odpowiednio dobranych do podłoża,
- na listwach montażowych przykręconych do podłoża odpowiednio dobranymi wkrętami.

DODATKOWE INFORMACJE:

- profil współpracuje z listwami montażowymi TEST-36 i TEST-74.



Einfacher Aufbau und Funktionalität.

ANWENDUNG

- zur Montage auf der Oberfläche der vorhandenen Möbel, Gebäude

MONTAGE

- Unter dem LED-Streifen, mit Schrauben entsprechend an den Untergrund angepaßt
- auf Montageleisten, die mit angepassten Schrauben am Boden verschraubt sind

ZUSÄTZLICHE INFORMATIONEN

- das Profil wird mit den Montageleisten TEST-36 und TEST-74 verwendet

profil / Profil

długość / Länge	szerokość LED / LED-Breite	wykończenie powierzchni / Oberfläche	numer artykułu / Artikelnummer
1 m	13 mm	● Srebrny anodowany / Silber eloxiert	B4369ANODA_1
2 m			B4369ANODA_2
3 m			B4369ANODA_3

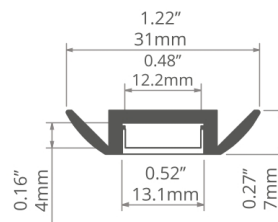
akcesoria / Zubehör

osłony mleczne / opale Abdeckungen	zaślepki szare / graue Endkappen	profil / Profil	inne akcesoria / sonstiges Zubehör
KA-12 17078	STOS-ALU 00085	TEST-36 B6639	ZATRZASK TEKNIK / TEKNIK EINRASTER 24003
HS-12 00157	sprężyny mocujące / Befestigungsfedern	TEST-74 W4507	DŁAWNICA 8.8X1.2 / KABELVERSCHRAU- BUNG 8.8X1.2 00802
KA-PRO-12 17066	PDS 00800		
osłony przezroczyste / transparente Abdeckungen			
KA-12 17079			
HS-12 00158			
KA-PRO-12 17067			

Universal Extrusions for surface mount, recessed or suspended applications /
Perfiles universales para aplicaciones de montaje en superficie, empotradas o suspendidas

STOS-ALU

REF. B4369



Simple design and functionality.
Dedicated for LED strips up to (0.50" / 13 mm) wide.

APPLICATION

- used as interior lighting, surface mount extrusion: shelving, ceilings, cabinets etc.

ASSEMBLY

- using screws properly selected for the mounting surface and placed under the LED strip.
- on the mounting strip fixed to the surface with properly selected screws.

ADDITIONAL INFORMATION

- the extrusion fits dedicated mounting strips.
- maximizes the applications and uses available for LED light strips.
- lighting or illumination of certain areas (stream of light may vary depending on the power of applied LEDs).



Diseño simple y funcionalidad.
Dedicado para tiras de LED de hasta (0.50" / 13 mm) de ancho.

APLICACIÓN

- utilizado como iluminación interior, perfil de montaje en superficie: estanterías, techos, armarios, etc.

MONTAJE

- utilizando tornillos adecuadamente seleccionados para la superficie de montaje y colocados debajo de la tira de LED.
- en la tira de montaje fijada a la superficie con tornillos correctamente seleccionados.

INFORMACIÓN ADICIONAL

- el perfil se adapta a tiras de montaje dedicadas.
- maximiza las aplicaciones y usos disponibles para tiras de luz LED.
- iluminación o iluminación de ciertas áreas (el flujo de luz puede variar según la potencia de los LED aplicados).

extrusion / perfil

length / longitud	space for LED strip / espacio para tira de LED	surface finish / terminado de superficie	reference number / número de artículo
39.4" / 1 m	0.5" / 13 mm	● Silver anodized / Ánodo de plata	B4369ANODA_1
78.7" / 2 m			B4369ANODA_2
118" / 3 m			B4369ANODA_3

accessories / accesorios

frosted covers / difusores escarchados	grey end caps / tapas finales gris	extrusions / perfiles	other accessories / otros accesorios
KA-12 17078	STOS-ALU 00085	TEST-36 B6639	TEKNIK LATCH / CLIP 24003
HS-12 00157	mounting springs / resortes de montaje	TEST-74 W4507	8.8x1.2 GLAND / GLÁNDULA 00802
KA-PRO-12 17066	PDS 00800		
clear covers / difusores transparentes			
KA-12 17079			
HS-12 00158			
KA-PRO-12 17067			

Profile STOS-ALU is made of high-grade, double anodized aluminum, making it particularly resistant to corrosion and mechanical damage, which prolongs its life. It is designed for strips and strips of LED light sources, of a width not exceeding 12,8mm.

The LEDs should override a special cover type K12 or HS12 (choice of milk or transparent), that he had the best properties of light. All covers are made of polycarbonate, a shield-type HS12 received a certificate testifying to its excellent resistance to weathering, UV and flammability. The choice of polycarbonate housings ensures transparency and an exceptionally good mechanical properties.

Profile of the LED light source is used primarily in lighting design, in particular lighting cabinets or sites where it would be impossible to mount another profile. It can also be placed in the recesses of suspended ceilings.

The great advantage is the possibility of luminaire which will be characterized by high tightness and its class of resistance against ingress of solid objects, dust and water will be exactly IP 67. After sealing profile can be used to illuminate the exterior architectural elements, among others, facades of buildings, gardens, monuments and many others.

Mounting profile to the ground is carried out using any double-sided tape or adhesive mounting, as well as screws, which guarantee easy and quick installation on any chosen surface. All the elements necessary for installation can be found in our online store. In the case of drywall - plaster installation is carried out with the participation of special springs surface PDS. When the assembly profile is held in the ceiling type Armstrong using springs PDS it is recommended to further use of the special lock washers entire structure.

Profile are dedicated polypropylene caps as accessories. Covers are designed to protect the profile against the ingress of dust and undesirable elements that could contaminate the LED strip and at the same time aggravate its excellent light performance. All the necessary elements you can use to expand the profile, no problem can be found on our website under "Accessories".

We invite you to familiarize yourself with our offer.

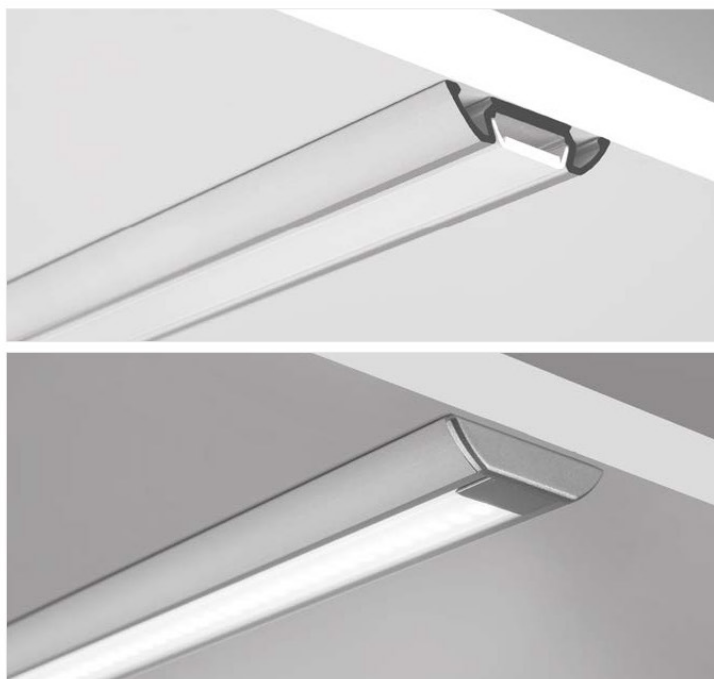
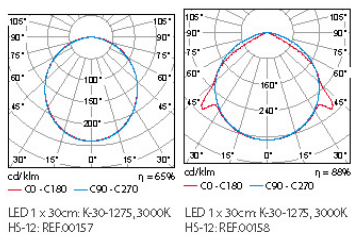
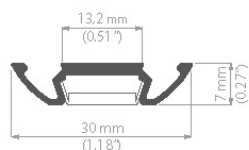
0.1 / Profile do montażu na powierzchni / Surface mount extrusions / Profile zur Montage auf der Oberfläche

STOS

PL / **Uniwersalne zastosowanie.**
Prosty montaż na wszelkich
płaszczyznach ścian, mebli, sufitów,
na elementach wystawienniczych itp.

EN / **Universal use.** Simple mounting
to any surfaces of walls, furniture, ceilings,
on exhibition elements etc.

DE / **Universelle Anwendung.**
Einfache Montage auf allen Oberflächen
der Wände, Möbel, Decken,
Ausstellungsgegenstände u. a.



STOS

dlugość length Länge	szerokość paska LED LED strip width Breite LED Band	wykończenie powierzchni surface finish Oberfläche	numer artykułu article number Artikelnummer
1m (standard) 2m (standard) 3m (standard) 3 - 6m *	1 x LED strip max. 10,8 mm	● anodowany / anodized / eloxiert	B4369ANODA

* Na specjalne zamówienie / Special order / Sonderbestellung.

akcesoria / accessories / zubehör


OSŁONKI / COVERS / ABDECKUNGEN

	K-12	łatwy montaż / easy to assemble / einfach zu montieren	1m, 2m, 3m (standard)	PC	mleczna / frosted / opak	00155
					przezroczysta / transparent	00156
	KA-12-v1	łatwy montaż / easy to assemble / einfach zu montieren	1m, 2m, 3m (standard)	PC	mleczna / frosted / opak	17078
					przezroczysta / transparent	17079
	KA-BIS-12	łatwy montaż, dobre rozpraszanie światła / easy to assemble, very good light dispersion / einfach zu montieren sehr gute Lichtstreuung	1m, 2m, 3m (standard)	PC	mleczna / frosted / opak	17073
					przezroczysta / transparent	17074
	HS-12	certyfiakat UV, dobra klasa ognioodporności / UV certificate, good class of refractory-resistance / UV-Zertifikat, gute Feuerwiderstandsklasse	1m, 2m, 3m (standard)	PC	mleczna / frosted / opak	00157
					przezroczysta / transparent	00158

ZASŁEPKI / END CAP / ENDKAPPEN

	STOS	zaślepka podstawowa / basic end cap / Endkappe	PP		jasno szara / light gray / hellgrau	00085
			PP		metalizowana / metalised / metallisiert	24065

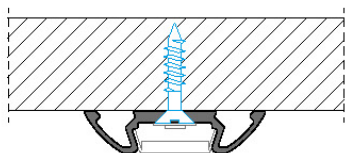
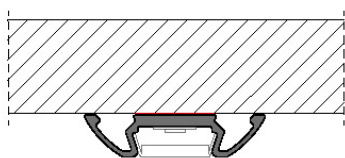
AKCESORIA MONTAZOWE / MOUNTING ACCESSORIES / MOUNTING ACCESSORIES

	PDS	sprężyna mocująca / mounting spring / Flachfeder	stal / steel / Edelstahl			00800
---	-----	--	--------------------------	--	--	-------

STOS



STOS



UNIWERSALNE ZASTOSOWANIA

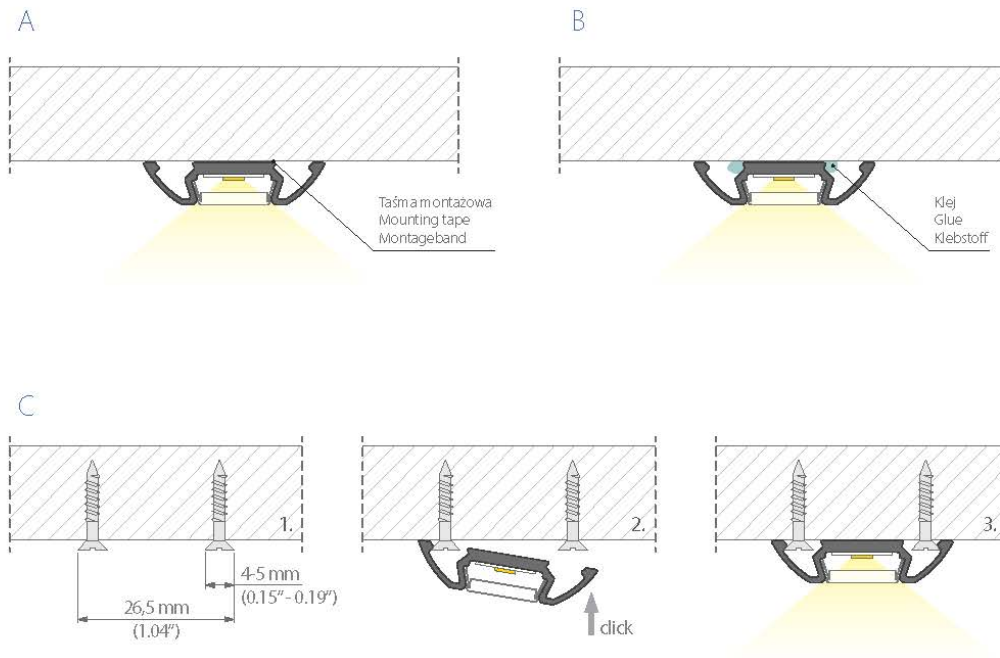
Oświetlenie wnętrz, w szczególności szafek, witryn, akcentowe oświetlenie we wnękach sufitów podwieszanych. Uniwersalny profil o bardzo wielu sposobach montażu np. klej montażowy lub taśma montażowa, wkręty.

UNIVERSAL APPLICATIONS

Lighting of interiors, in particular cabinets, showcases, decoration light in the recesses of suspended ceilings. Universal extrusion providing numerous means of mounting, e.g. using mounting glue, mounting tape or screws.

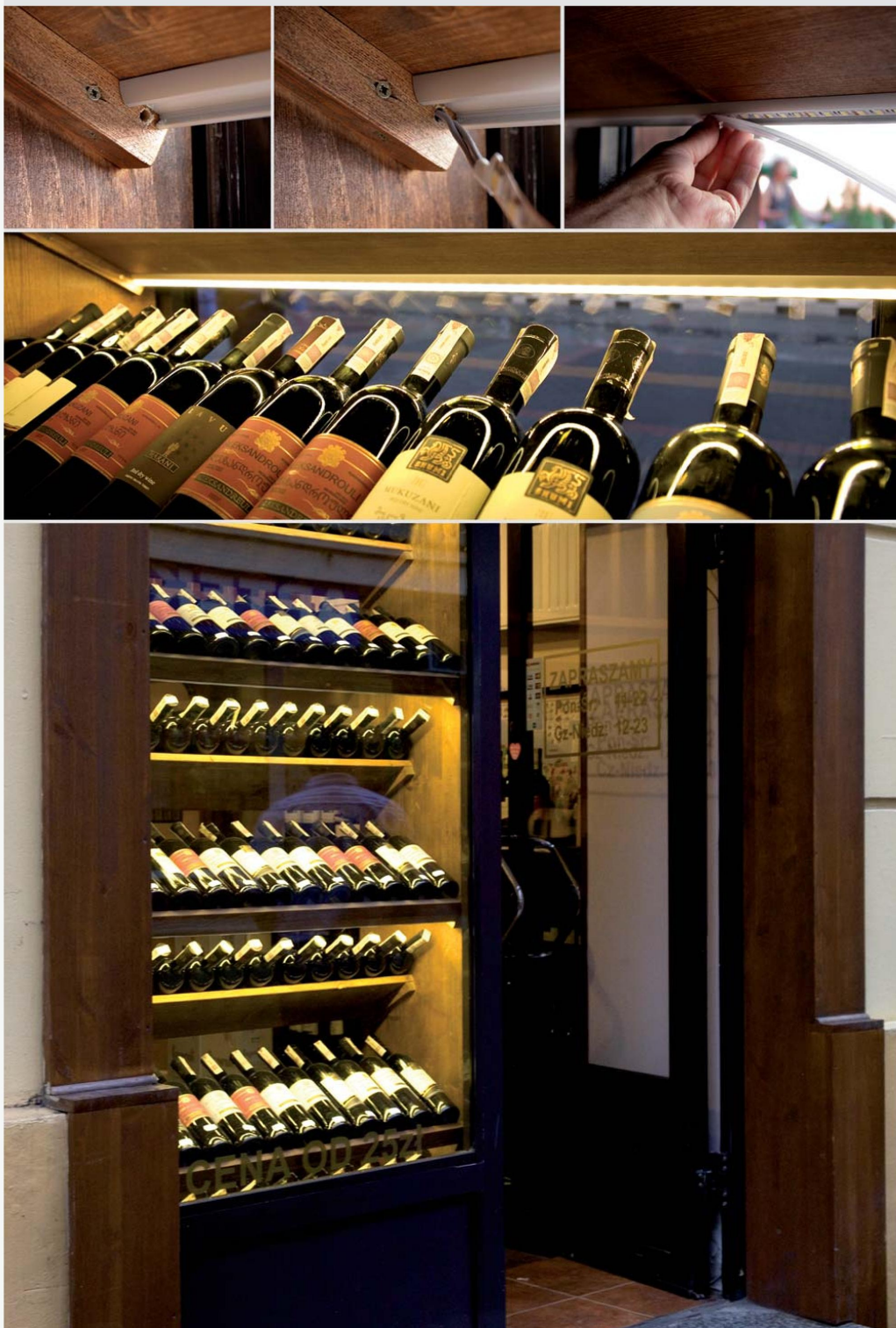
UNIVERSELLE ANWENDUNGEN

Die Innenbeleuchtung, vor allem von Schränken, Vitrinen, Akzentbeleuchtung in den untergehängten Decken. Ein universelles Profil von verschiedenen Montageweisen wie z. B. Montagekleber, Montageband, Befestigungsschrauben.



STOS - ALU

50



 LED profiles

