

Link to the product: <https://stair-lighting.com/profiel-led-stepus-p-2113.html>

Profiel LED STEPUS

Price	45.16 Euro
Availability	Available
Shipping time	4 days
Number	2113
Manufacturer	KLUS

Product description

Important Information

The purchase a piece in the store means the purchase 1 linear meter of the profile or cover

If you want to buy a profile that has a length of 2 meters you have to buy 2 pieces, 3 meters you have to buy 3 pieces, and the multitude of quantity when ordering.

The total length of the aluminum profile or the panel to the profile - is the total quantity of the piece number that was bought in the store.

The choice of the appropriate shipping method will take place at the end of the order process.

[The details of the shipping method and packaging of the aluminum profiles you will find here \(click in the link\)](#)

Set includes - Profile 1m + 2 x cords anti-slip

The product you have selected contains only - aluminum profile + 2 x cords anti-slip - does not include the accessories located in the Accessories tab.

Additional accessories like covers, end caps, electricity conductive end cap, mounting bracket, fasteners, mounting springs, proximity switch, micro switch, mounting system and others are available under "Accessories".

If you are interested in longer lengths than one meter, write to us we will quote the delivery cost to you. Transport companies expect additional charges for long shipments.

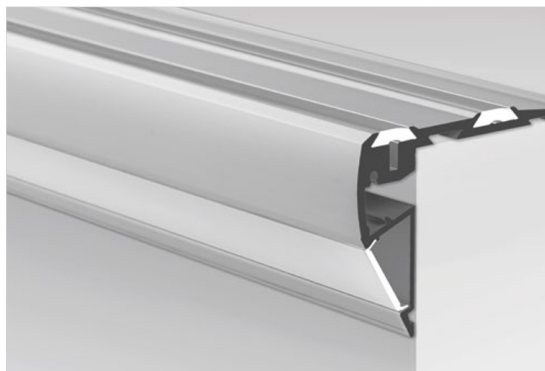
For each country is different maximum length of the profile that we can send. It does not depend on us only by courier.

We also do service cutting aluminum profiles to the indicated size - write or call get comprehensive information.

Profile do oświetlenia poręczy, schodów, korytarzy, ciągów pieszych /
Profile zur Beleuchtung von Geländern, Treppen, Fluren und Bereichen des Fußverkehrs

STEPUS

REF. 18038ANODA



Zwarty kształt profilu niweluje możliwość „zahaczenia przy wchodzeniu”.

Możliwość trzech wariantów oświetlenia.

Posiada elementy antypoślizgowe.

Duża odporność mechaniczna.

PRZEZNACZENIE PRODUKTU:

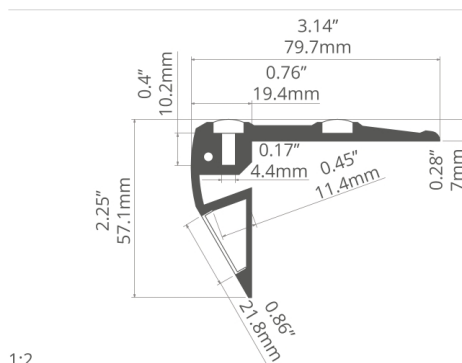
- zabezpiecza krawędź stopnia i posiada dwa rodzaje oświetlenia, ostrzegawcze oraz oświetlenie stopni schodów.

MONTAŻ:

- za pomocą wkrętów odpowiednio dobranych do rodzaju podłoża.

DODATKOWE INFORMACJE:

- profil sprzedawany jest w zestawie z dwoma sznurami antypoślizgowymi,
- pomieści pasek LED w rękawie silikonowym,
- część przylegająca do płaszczyzny pionowej stopnia wpisuje się w kąt 30°,
- dolny pasek LED kieruje światło do przodu i jest zabezpieczony osłonką LIGER-22,
- wąskie taśmy LED (do 6 mm), emitujące światło w bok w kanale pod sznurem antypoślizgowym,



1:2



Kompakte Form des Profils minimiert das „hängen bleiben bei der Einführung”.

Drei Beleuchtungsmöglichkeiten.

Verfügt über Antirutsch-Elemente.

Hohe mechanische Festigkeit.

ANWENDUNG

- es schützt den Rand der Treppenstufe und kommt mit Warnbeleuchtung und eigentlicher Beleuchtung der Treppen

MONTAGE

- mit Schrauben angepasst an den Untergrund

ZUSÄTZLICHE INFORMATIONEN

- Profil mit zwei Antirutschschnüren im Satz
- LED-Streifen im Silikonärmel
- das Teil, das an der vertikalen Fläche anliegt, passt in einen Winkel von 30°
- der untere LED-Streifen richtet das Licht nach vorne und ist mit der Abdeckung LIGER-22 gesichert
- schmale LED-Streifen (bis 6 mm) strahlen das Licht seitlich im Kanal unter dem Antirutschschnur

profil / Profil

długość / Länge	szerokość LED / LED-Breite	wykończenie powierzchni / Oberfläche	numer artykułu / Artikelnummer
1 m	top / oben: 2 x 10 mm bottom / Unterseite: 22 mm	● Srebrny anodowany / Silber eloxiert	B8786ANODA_1
2 m			B8786ANODA_2
3 m			B8786ANODA_3
1 m		● Czarny anodowany / Schwarz eloxiert	18038K7_1
2 m			18038K7_2
3 m			18038K7_3

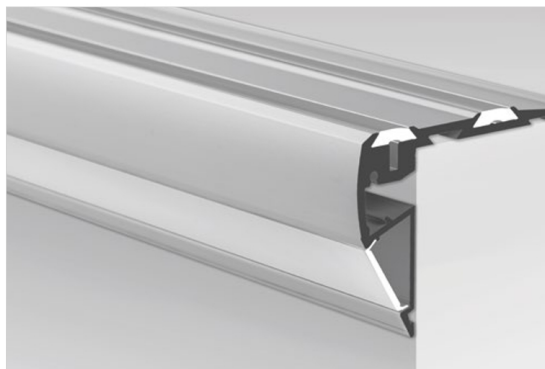
akcesoria / Zubehör

osłony mleczne / opale Abdeckungen	zaślepki szare / graue Endkappen	inne akcesoria / sonstiges Zubehör	inne akcesoria / sonstiges Zubehör
HS-22 17011	STEPUS-L 24229	SZNUR ANTYP- ŚLIZGOWY 14 / ANTI-RUTSCH STREIFEN 14 17001	PRZYRZĄD DO MONTAŻU SZNU- RA ANTYP-ŚLIZGO- WEGO / GERÄT ZUR MONTAGE DES ANTIRUT- SCHSCHNURS 00023
LIGER-22 17032V1	STEPUS-P 24230		
osłony przezroczyste / transparente Abdeckungen	semi-transparent clear covers/ difusores semitransparente	DŁAWNICA 8.8X1.2 / KABELVERSCHRAU- BUNG 8.8X1.2 00802	MP-22 MASKOWNI- CA / GRILL 17167
HS-22 17022	MUN-22 17042		

Extrusions for handrail, stair, corridor and footpath lighting /
Perfiles para barandillas, escalones, pasillos e iluminación de caminos

STEPUS

REF. 18038ANODA



Compact shape of the extrusion eliminates the danger of "tripping on entering".

Three lighting variants.

Non-slip parts.

High mechanical resistance.

APPLICATION

- protects the edge of the step and has two types of lighting modes: warning and lighting the steps.

ASSEMBLY

- using screws appropriately selected for the mounting surface.

ADDITIONAL INFORMATION

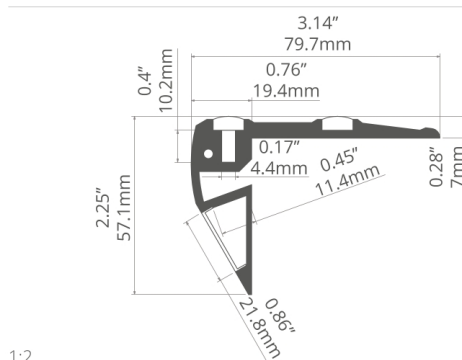
- the LED strip is hidden behind a rubber tread.
- the part adjacent to the vertical plane of the step is inscribed in the angle of 30°.
- the bottom LED strip directs the light forward and is protected by the LIGER-22 cover.

extrusion / perfil

length / longitud	space for LED strip / espacio para tira de LED
39.4" / 1 m	top / arriba: 2 x 0.39" / 10 mm bottom / abajo: 0.86" / 22 mm
78.7" / 2 m	
118" / 3 m	
39.4" / 1 m	
78.7" / 2 m	
118" / 3 m	

accessories / accesorios

frosted covers / difusores escarchadas	grey end caps / tapas finales gris
HS-22 17011	STEPUS-L 24229
LIGER-22 17032V1	STEPUS-P 24230
clear covers / difusores transparentes	semi-transparent clear covers/ difusores semitransparente
HS-22 17022	MUN-22 17042



1:2



La forma compacta del perfil elimina la posibilidad de tropezarse al entrar.

Tres opciones de iluminación.

Pisada antideslizante.

Alta resistencia mecánica.

APLICACIÓN

- protege el borde del escalón y cuenta con dos tipos de iluminación, advertencia y iluminación de escalones.

MONTAJE

- utilización de tornillos debidamente seleccionados para la superficie de montaje.

INFORMACIÓN ADICIONAL

- la tira del LED se oculta detrás de una pisada de goma.
- la parte adyacente al plano vertical del escalón está inscrita en el ángulo de 30°.
- la tira de LED inferior dirige la luz hacia adelante y está protegida por el difusor LIGER-22.

surface finish / terminado de superficie	reference number / número de artículo
● Silver anodized / Ánodo de plata	B8786ANODA_1
	B8786ANODA_2
	B8786ANODA_3
● Black anodized / Negro anodizado	18038K7_1
	18038K7_2
	18038K7_3

other accessories / otros accesorios	other accessories / otros accesorios
8.8x1.2 GLAND / GLÁNDULA 00802	MP-22 MASKING COVER / ENMA- SCARAMIENTO 17167
ANTI-SLIP RUBBER STRIP 14 / TIRA DE GOMA ANTIDESLIZANTE 14 17001	
TOOL FOR MOUNTING ANTI-SLIP RUBBER STRIP / HERRAMIENTA PARA MONTAR LA TIRA DE GOMA ANTIDESLIZANTE 00023	

Profile STEPUS stair profile is made of high-grade aluminum, which has undergone double anodizing, so that the profile is resistant to corrosion and mechanical damage, with the possibility of using LED diodes in the upper and lower half space.

To the top lighting LEDs is used on the side, where the led strips width does not exceed 7 mm, while for the lower lighting of standardized tape or strip LED with a maximum width of 10.8 mm.

STEPUS profile is used for lighting LED strips placed on soft or hard, for lighting and illumination (depending on the power of applied LEDs). The profile can also be placed on the edges of stair steps in cinemas, shops, clubs and restaurants. It allows you to direct light in the opposite direction than the eyes of the user. As a result, it is possible to achieve the effect of delicate highlights, not gross eyes.

To install the profile to the ground to be used for the mounting screws and glue. There is also the possibility of a luminaire of high tightness and resistance class IP 67.

It is recommended that the LEDs mounted in the lower part of the profile override a special cover K, KA-BIS, HS (choice of milk and transparent) and LIGER (version milky dull). All covers are made of polycarbonate. One of the guards (HS) received the certificate, which guarantees excellent resistance to sun, rain and other weather factors, UV and flammability.

In addition, it should be remembered that the diode on the upper part of the profile with a special rope override the anti-slip, which is also mounted in a position for attaching the profile to the substrate.

To connect the profiles in the corner of the convex ratio is 90 degrees cap Corner STEP-90. Cover guarantees a safe and devoid of sharp corners, and also aesthetic finishing profiles that are used to illuminate stairs.

The anti-slip rubber strip is included with the profile of STEP, but it can also be purchased as a separate article. Installation of the anti-slip rubber strip is not the most difficult, and it makes it easier to specially designed instrument.

Profile should include polypropylene plugs to protect it against the ingress of dust and other unwanted objects, which could lead to contamination LED strip, and thus to a deterioration in the quality of light.

We invite you to familiarize yourself with our offer.

application

for LED lighting strips on soft or hard

for lighting and illumination (depending on the power of applied LEDs)

Use STEP profile on the edge of a stair level;

STEP profile helps to direct the light in the opposite direction to the vision of the user. In this way we get a gentle lighting effect - not offending the eye.

Product description:

Material: anodized aluminum

Standard lengths: 1m, (we sell profiles in sections 1 meter)

Mounting: mounting adhesives, double-sided tape (accessories)

Ending: Plastic plug (accessory)

Certificate: CE

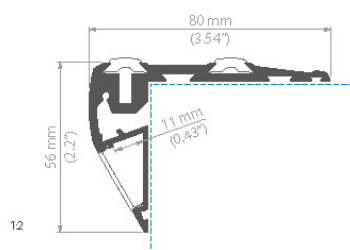
11/ Profil do oświetlania poręczy, schodów / Extrusions for handrails, stair lighting / Handlaufbeleuchtung

STEPUS-KPL

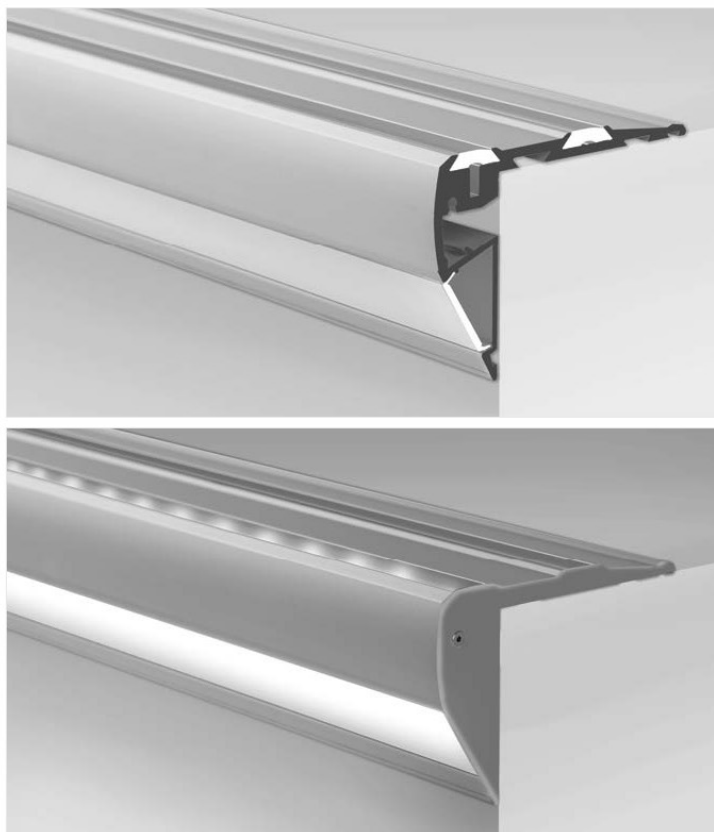
PL / **Profil przeznaczony do montażu na krawędziach stopni schodów, podestów itp.** Podświetla stopnie oraz sygnalizuje o nich światłem. Wyposażony w sznur antypoślizgowy.

EN / **An extrusion intended for installation on the edges of stairs, platforms etc.** It illuminates the steps, signals their presence with light and is equipped with an anti-slip rope.

DE / **Das Profil geeignet für Montage auf den Rändern von den Treppen und Treppenabsätzen u. a.** Es beleuchtet und signalisiert die einzelnen Treppen. In eine Anti-Rutsch-Schnur ausgestattet.



Profil spełnia normy w USA (Americans with Disabilities Act).
STEPUS extrusion is ADA compliant.
Das Profil entspricht den amerikanischen Standards (Americans with Disabilities Act).



STEPUS-KPL

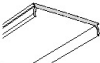
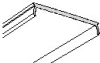

dlugość length Länge	szerokość paska LED LED strip width Breite LED Band	wykończenie powierzchni surface finish Oberfläche	numer artykułu article number Artikelnummer
1m (standard) 2m (standard) 3m (standard)	1 x LED strip max. 7 mm (LED świecące w bok, side emitting LED, das seitlich eingebracht wird)	● anodowany / anodized / eloxiert	18038ANODA
2-6m*	1 x LED strip max. 10,8 mm		

generated by the shopGold

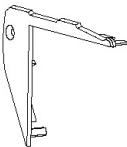

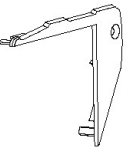

* Na specjalne zamówienie / Special order / Sonderbestellung.

akcesoria / accessories / Zubehör

OSŁONKI / COVERS / ABDECKUNGEN

	LIGER-22	tworzywo optyczne, linia światła / optical material, line of light / optisches Material, Lichtlinie	1m, 2m, 3m (standard)	PC	mleczna / frosted / opak	17032
	MUN-22	Redukuje zjawisko ośnienia (UGR) przy zachowaniu do 95% przepuszczalności światła / Reduces glare (UGR) while retaining up to 95% light transmission / reduziert Blendung (UGR) bei Behaltung bis zu 95 % Lichtdurchlässigkeit	1m, 2m, 3m (standard)	PC	mroźona / semitransparent / transparent matt	17042
	HS-22	certyfi kat UV, dobra klasa ognioodporności / UV certificate, good class of refractory-resistance / UV-Zertifikat, gute Feuerwiderstandsklasse	1m, 2m, 3m (standard)	PC	mleczna / frosted / opak przezroczysta / transparent	17011 17022

ZASŁĘPKI / END CAP / ENDKAPPEN

	STEPUS-P-KPL	zasłępka prawa / right end cap / rechts Endkappe			jasno szara / light gray / hellgrau	24230
	STEPUS-L-KPL	zasłępka lewa / left end cap / links Endkappe			jasno szara / light gray / hellgrau	24229

AKCESORIA / ACCESSORIES / ACCESSORIES

	sznur antypoślizgowy do STEP / anti-slip rubber strip for STEP / Anti-Rutsch Streifen für STEP		pp			17001
---	---	--	----	--	--	-------







