

Link to the product: <https://stair-lighting.com/profiel-led-step-black-p-1974.html>

## Profiel LED STEP - black

Price	<b>46.90 Euro</b>
Availability	<b>Available</b>
Shipping time	<b>4 days</b>
Number	<b>1974</b>
Manufacturer	<b>KLUS</b>

### Product description

#### Important Information

The purchase a piece in the store means the purchase 1 linear meter of the profile or cover

If you want to buy a profile that has a length of 2 meters you have to buy 2 pieces, 3 meters you have to buy 3 pieces, and the multitude of quantity when ordering.

The total length of the aluminum profile or the panel to the profile - is the total quantity of the piece number that was bought in the store.

The choice of the appropriate shipping method will take place at the end of the order process.

[The details of the shipping method and packaging of the aluminum profiles you will find here \(click in the link\)](#)

Set includes - Profile 1m + 2 x cords anti-slip

The product you have selected contains only - aluminum profile + 2 x cords anti-slip - does not include the accessories located in the Accessories tab.

Additional accessories like covers, end caps, electricity conductive end cap, mounting bracket, fasteners, mounting springs, proximity switch, micro switch, mounting system and others are available under "Accessories".

If you are interested in longer lengths than one meter, write to us we will quote the delivery cost to you. Transport companies expect additional charges for long shipments.

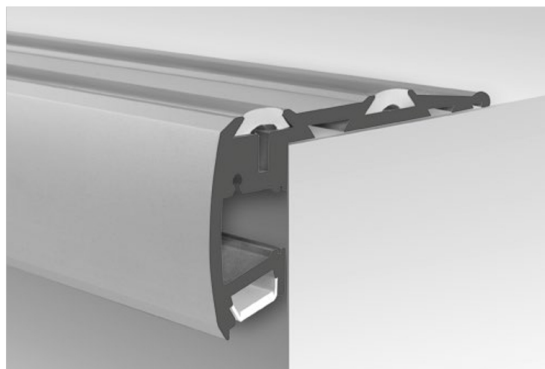
For each country is different maximum length of the profile that we can send. It does not depend on us only by courier.

We also do service cutting aluminum profiles to the indicated size - write or call get comprehensive information.

Profile do oświetlenia poręczy, schodów, korytarzy, ciągów pieszych /  
Profile zur Beleuchtung von Geländern, Treppen, Fluren und Bereichen des Fußverkehrs

## STEP

REF. 18042



Trzy warianty oświetlenia.  
Elementy antypoślizgowe.  
Duża odporność mechaniczna.

#### PRZEZNACZENIE PRODUKTU:

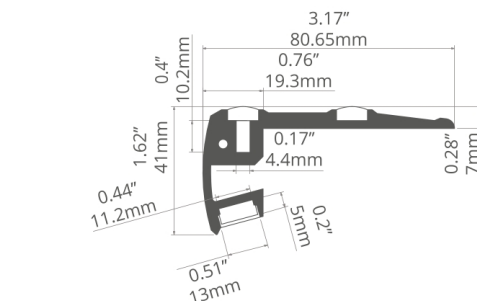
- zabezpieczenie krawędzi stopnia z zintegrowanym oświetleniem ostrzegawczym.

#### MONTAŻ:

- za pomocą wkrętów odpowiednio dobranych do rodzaju podłoża.

#### DODATKOWE INFORMACJE:

- możliwość montażu paska LED w rękawie silikonowym,
- wąskie taśmy LED (do 6 mm), emitujące światło w bok w kanale pod sznurem antypoślizgowym,
- standardowa szerokość taśmy LED (do 10 mm) do oświetlenia trepa.



1:2



Drei Beleuchtungsmöglichkeiten.  
Antirutsch-Elemente.  
Hohe mechanische Festigkeit.

#### ANWENDUNG

- Absicherung des Treppenrandes mit integrierter Warnbeleuchtung

#### MONTAGE

- mit Schrauben angepasst an den Untergrund

#### ZUSÄTZLICHE INFORMATIONEN

- der LED-Streifen kann im Silikonärmel montiert werden
- schmale LED-Streifen (bis 6 mm) strahlen das Licht seitlich im Kanal unter dem Antirutschschrur
- Standardbreite des LED-Streifens (bis 10 mm) zur Beleuchtung der Treppenstufe

#### profil / Profil

długość / Länge	szerokość LED / LED-Breite	wykończenie powierzchni / Oberfläche	numer artykułu / Artikelnummer
1 m	górn / oben: 2 x 10 mm spód / Unterseite: 11 mm	● Srebrny anodowany / Silber eloxiert	<b>18042ANODA_1</b>
2 m			<b>18042ANODA_2</b>
3 m			<b>18042ANODA_3</b>
1 m		● Czarny RAL / Schwarz RAL	<b>18042K7_1</b>
2 m			<b>18042K7_2</b>
3 m			<b>18042K7_3</b>

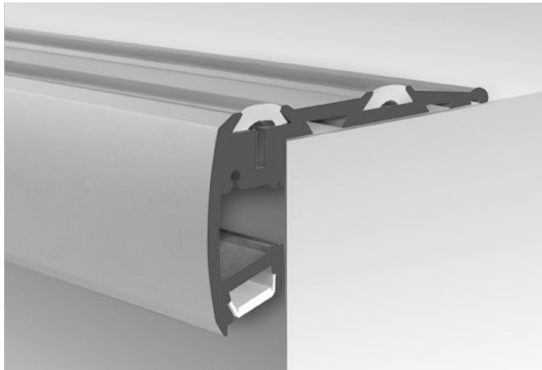
#### akcesoria / Zubehör

osłony mleczne / opale Abdeckungen	osłony przezroczyste / transparente Abdeckungen	zaślepki szare / graue Endkappen	inne akcesoria / sonstiges Zubehör
KA <b>17035</b>	KA <b>17036</b>	STEP-L <b>24114</b>	SZNUROWY 14 / ANTI-RUTSCH STREIFEN 14 <b>17001</b>
KA-COM <b>17121</b>	KA-COM <b>17122</b>	STEP-R <b>24113</b>	
HS <b>1369</b>	HS <b>1370</b>	STEP-90 <b>24025</b>	DŁAWNICA 8.8X1.2 / KABELVERSCHRAU- BUNG 8.8X1.2 <b>00802</b>
LIGER <b>17037</b>	KA-PRO <b>17065</b>	zaślepki czarne / schwarze Endkappen	
60 <b>17075</b>		STEP-L <b>24125</b>	PRZYRZĄD DO MONTAŻU SZNU- RA ANTYPOŚLIZGO- WEGO / GERÄT ZUR MONTAGE DES ANTIRUT- SCHSCHNURS <b>00023</b>
KA-PRO <b>17064</b>		STEP-R <b>24126</b>	

Extrusions for handrail, stair, corridor and footpath lighting /  
Perfiles para barandillas, escalones, pasillos e iluminación de caminos

## STEP

REF. 18042



Three lighting options.  
Non-slip tread.  
High mechanical resistance.

#### APPLICATION

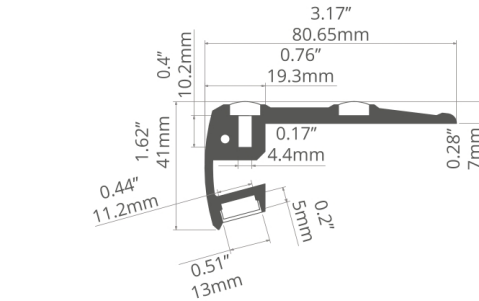
- step edge protection with integrated warning lighting.

#### ASSEMBLY

- with screws appropriately selected for the mounting surface.

#### ADDITIONAL INFORMATION

- LED strip concealed behind a rubber strip.
- protects the edge of the step and has two types of lighting, warning and stair step lighting.



1:2



Tres opciones de iluminación .  
Pisada antideslizante.  
Alta resistencia mecánica.

#### APLICACIÓN

- protección de borde de paso con luces de advertencia integradas.

#### MONTAJE

- con tornillos adecuadamente seleccionados para la superficie de montaje.

#### INFORMACIÓN ADICIONAL

- tira de LED oculta tras una tira de goma.
- protege el borde del escalón y tiene dos tipos de iluminación, advertencia e iluminación de escalón.

#### extrusion / perfil

length / longitud	space for LED strip / espacio para tira de LED	surface finish / terminado de superficie	reference number / número de artículo
39.4" / 1 m			<b>18042ANODA_1</b>
78.7" / 2 m	top / arriba: 2 x 0.39" / 10 mm bottom / abajo: 0.43" / 11 mm	● Silver anodized / Anodo de plata	<b>18042ANODA_2</b>
118" / 3 m			<b>18042ANODA_3</b>
39.4" / 1 m			<b>18042K7_1</b>
78.7" / 2 m	top / arriba: 2 x 0.39" / 10 mm bottom / abajo: 0.43" / 11 mm	● Black RAL / Negro RAL	<b>18042K7_2</b>
118" / 3 m			<b>18042K7_3</b>

#### accessories / accesorios

frosted covers / difusores escarchadas	clear covers / difusores transparentes	grey end caps / tapas finales gris	other accessories / otros accesorios
KA <b>17035</b>	KA <b>17036</b>	STEP-L <b>24114</b>	8.8x1.2 GLAND / GLÁNDULA <b>00802</b>
KA-COM <b>17121</b>	KA-COM <b>17122</b>	STEP-R <b>24113</b>	ANTI-SLIP RUBBER STRIP 14 / TIRA DE GOMA ANTIDESLIZANTE 14 <b>17001</b>
HS <b>1369</b>	HS <b>1370</b>	STEP-90 <b>24025</b>	
LIGER <b>17037</b>	KA-PRO <b>17065</b>	black end caps / tapas finales negro	
60 <b>17075</b>		STEP-L <b>24125</b>	TOOL FOR MOUNTING ANTI-SLIP RUBBER STRIP / HERRAMIENTA PARA MONTAR LA TIRA DE GOMA ANTIDESLIZANTE <b>00023</b>
KA-PRO <b>17064</b>		STEP-R <b>24126</b>	

Profile STEP stair profile is made of high-grade aluminum, which has undergone double anodizing, so that the profile is resistant to corrosion and mechanical damage, with the possibility of using LED diodes in the upper and lower half space.

To the top lighting LEDs is used on the side, where the led strips width does not exceed 7 mm, while for the lower lighting of standardized tape or strip LED with a maximum width of 10.8 mm.

STEP profile is used for lighting LED strips placed on soft or hard, for lighting and illumination (depending on the power of applied LEDs). The profile can also be placed on the edges of stair steps in cinemas, shops, clubs and restaurants. It allows you to direct light in the opposite direction than the eyes of the user. As a result, it is possible to achieve the effect of delicate highlights, not gross eyes.

To install the profile to the ground to be used for the mounting screws and glue. There is also the possibility of a luminaire of high tightness and resistance class IP 67.

It is recommended that the LEDs mounted in the lower part of the profile override a special cover K, KA-BIS, HS (choice of milk and transparent) and LIGER (version milky dull). All covers are made of polycarbonate. One of the guards (HS) received the certificate, which guarantees excellent resistance to sun, rain and other weather factors, UV and flammability.

In addition, it should be remembered that the diode on the upper part of the profile with a special rope override the anti-slip, which is also mounted in a position for attaching the profile to the substrate.

To connect the profiles in the corner of the convex ratio is 90 degrees cap Corner STEP-90. Cover guarantees a safe and devoid of sharp corners, and also aesthetic finishing profiles that are used to illuminate stairs.

The anti-slip rubber strip is included with the profile of STEP, but it can also be purchased as a separate article. Installation of the anti-slip rubber strip is not the most difficult, and it makes it easier to specially designed instrument.

Profile should include polypropylene plugs to protect it against the ingress of dust and other unwanted objects, which could lead to contamination LED strip, and thus to a deterioration in the quality of light.

We invite you to familiarize yourself with our offer.

## application

for LED lighting strips on soft or hard

for lighting and illumination (depending on the power of applied LEDs)

Use STEP profile on the edge of a stair level;

STEP profile helps to direct the light in the opposite direction to the vision of the user. In this way we get a gentle lighting effect - not offending the eye.

## Product description:

Material: anodized aluminum

Standard lengths: 1m, (we sell profiles in sections 1 meter)

Mounting: mounting adhesives, double-sided tape (accessories)

Ending: Plastic plug (accessory)

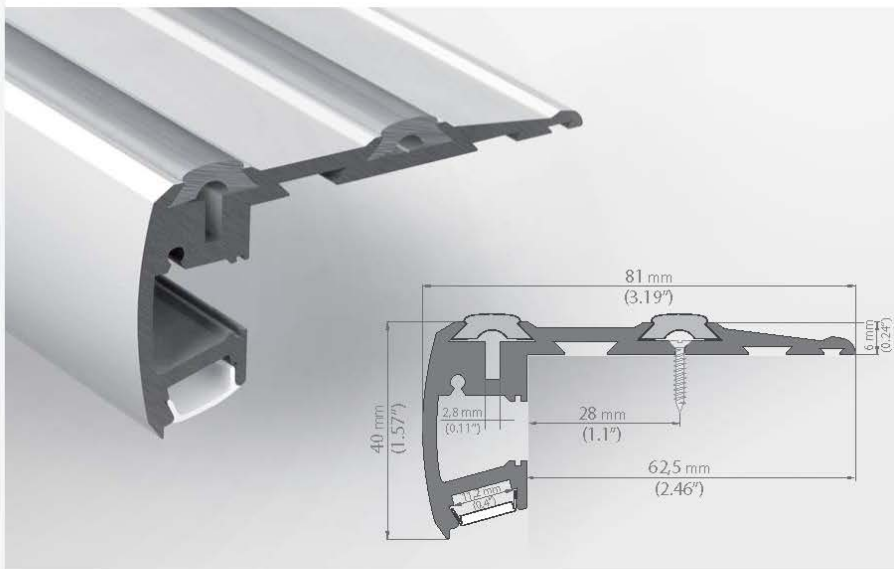
Certificate: CE



## STEP KPL.

Do trudnych warunków For heavy pedestrian traffic  
Für stark frequentierte Laufzonen

106



### STEP KPL. PROFIL



długość  
length  
Länge

1m (standard)  
2m (standard)  
3m \*  
3 - 6m \*\*

szerokość paska LED  
LED strip width  
Breite LED Band

1 x LED strip  
max. 6 mm  
(ledy świecące w bok, side emitting LED,  
das seitlich eingebracht wird)  
1 x LED strip  
max. 10,8 mm

wykończenie powierzchni  
surface finish  
Oberfläche

anodowany  
anodized  
eloxiert

numer artykułu  
article number  
Artikelnummer

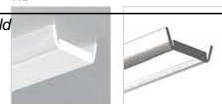
B4845

możliwość uzyskania poziomu szczelności IP 67 / IP 67 waterproof level can be achieved / Sonderanfertigung: wasserdicht bis IP67

### OSŁONKI / COVERS / ABDECKUNGEN

HS

UV CERTIFICATE  
płaska, dobre rozpraszanie światła / flat, very good light dispersion / flach, sehr gute Lichtstreuung



1m (standard)  
2m (standard)  
3m \*

mleczna / frosted / opak  
przezroczysta / transparent

1369

1370

## STEP KPL.

107

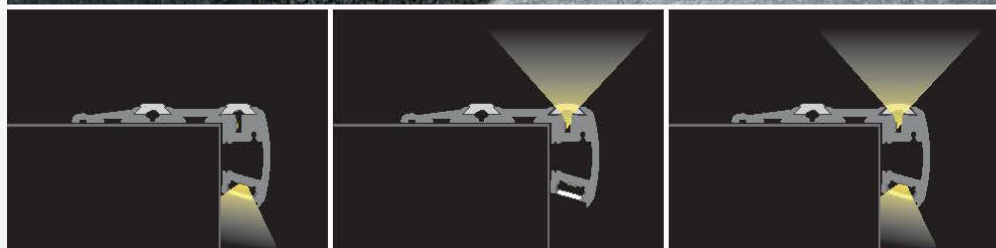
SZNUR ANTYPOŚLIZGOWY / ANTI-SLIP RUBBER STRIP /  
ANTI-RUTSCH STREIFEN



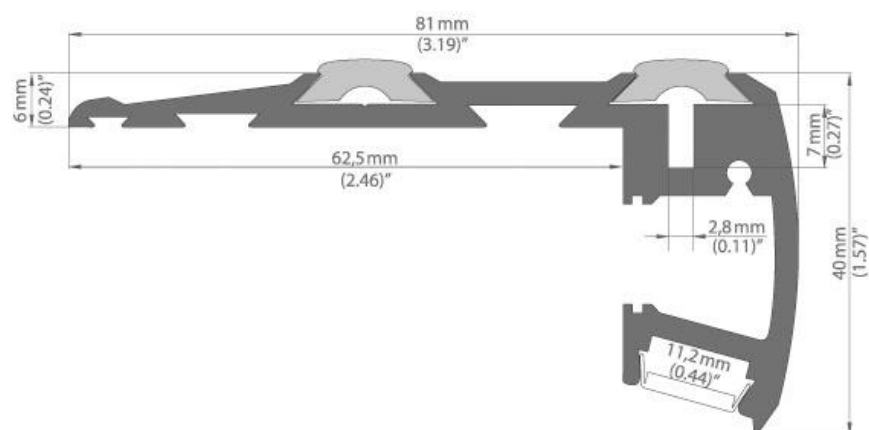
PRZYRZĄD DO MONTAŻU SZNURA ANTYPOŚLIZGOWEGO /  
TOOL FOR MOUNTING ANTI-SLIP RUBBER STRIP / Hilfsmittel zur Befestigung  
der ANTI-RUTSCHSTREIFEN



NAROŻNIK STEP-90 / STEP-90 CORNER / 90° ECKENSTEP-90



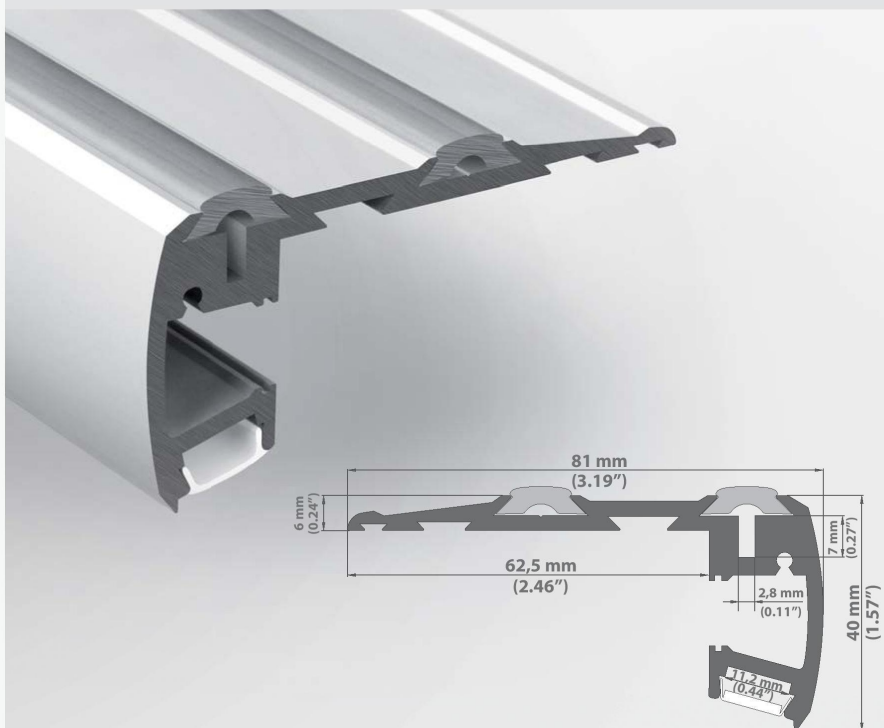
\* Dostępne po uzgodnieniu z działem handlowym / Available by arrangement with sales department. /  
verfügbar nach Absprache mit dem Vertrieb.








## STEP

74



STEP PROFIL	długość Länge length	wykończenie powierzchni Oberflächenveredelung surface finishing	numer artykułu Artikelnummer article number
	1m (standard) 2m (standard) 3m * 3 - 6m (na specjalne zamówienie / spezielle Bestellung / special order)	anodowany eloxiert anodized	B4845

SZNUR ANTYPOŚLIZGOWY ANTI-SLIP RUBBER STRIP ANTI-RUTSCH STREIFEN	długość Länge length	numer artykułu Artikelnummer article number
	1m 2m 3m *	00297

OSŁONKA - K ABDECKUNG - K COVER - K	długość Länge length	osłonka Abdeckung cover	wykończenie powierzchni Oberflächenveredelung surface finishing	numer artykułu Artikelnummer article number
	1m 2m 3m *	mleczna matt frosted	70 % przezroczystości, bardziej elastyczna 70 % transparent, mehr elastisch 70 % transparent, more flexible	1547
		przezroczysta klar transparent	98 % przezroczystości, bardziej elastyczna 98 % transparent, mehr elastisch 98 % transparent, more flexible	1548

OSŁONKA - K / ABDECKUNG - K / COVER - K : bardzo łatwa w montażu, „na klik” / sehr einfach in der Montage (just click !) / very easy to assemble (just click !)

\* Dostępne po uzgodnieniu z działem handlowym firmy KLUŚ / nach Absprache mit der KLUŚ Handelsabteilung erhältlich / available by arrangement with the sales department of KLUŚ.

Upraszamy informujemy o zastrzeżeniu sobie prawa do zmian asortymentowych i modyfikacji produktów



## STEP

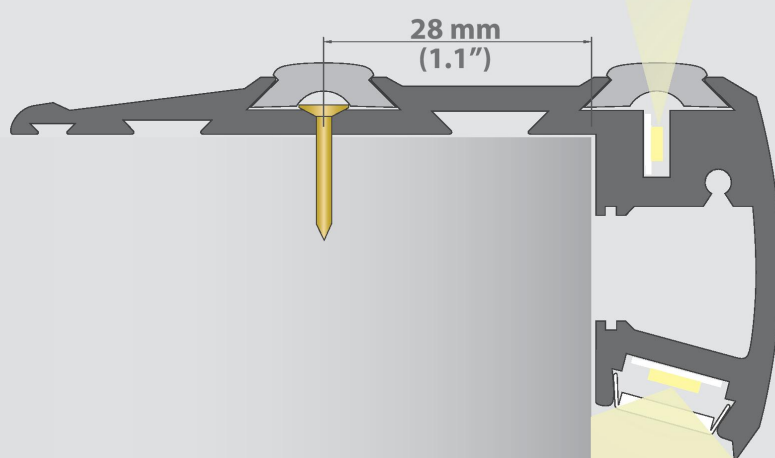
75

ZAŚLEPKI ENDKAPPEN END CAPS		numer artykułu Artikelnummer article number
	zaślepka STEP-R (prawa) Endkappe STEP-R (rechts) End Cap STEP-R (right)	00303
	zaślepka STEP-L (lewa) Endkappe STEP-L (links) End Cap STEP-L (left)	00304
PRZYRZĄD DO MONTAŻU SZNURA ANTYPOŚLIZGOWEGO VORRICHTUNG ZUM EINBRINGEN DES ANTI-RUTSCH STREIFEN TOOL FOR MOUNTING ANTI-SLIP RUBBER STRIP		numer artykułu Artikelnummer article number
		00023

SZNUR ANTYPOŚLIZGOWY  
ANTI-SLIP RUBBER STRIP  
ANTI-RUTSCH STREIFEN



\* Die Angaben in unserem Katalog entsprechen dem Stand bei Drucklegung, sind unverbindlich und dienen ausschließlich zu Informationszwecken.  
Wir behalten uns vor, jederzeit Änderungen an unseren Produkten vorzunehmen.



 LED profiles

