

Link to the product: <https://stair-lighting.com/profiel-led-steko-black-p-2267.html>

## Profiel LED STEKO - black

Price	<b>22.85 Euro</b>
Availability	<b>Available</b>
Shipping time	<b>4 days</b>
Number	<b>2267</b>
Manufacturer	<b>KLUS</b>

### Product description

#### Important Information

The purchase a piece in the store means the purchase 1 linear meter of the profile or cover

If you want to buy a profile that has a length of 2 meters you have to buy 2 pieces, 3 meters you have to buy 3 pieces, and the multitude of quantity when ordering.

The total length of the aluminum profile or the panel to the profile - is the total quantity of the piece number that was bought in the store.

The choice of the appropriate shipping method will take place at the end of the order process.

[The details of the shipping method and packaging of the aluminum profiles you will find here \(click in the link\)](#)

The product you have selected contains only - aluminum profile - does not include the accessories located in the Accessories tab.

Additional accessories like covers, end caps, electricity conductive end cap, mounting bracket, fasteners, mounting springs, proximity switch, micro switch, mounting system and others are available under "Accessories".

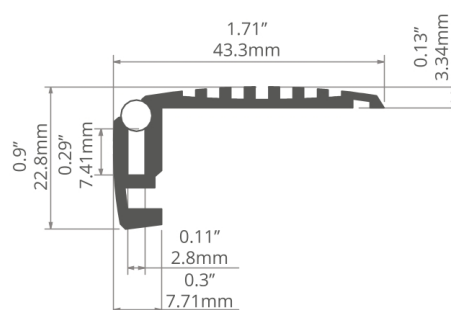
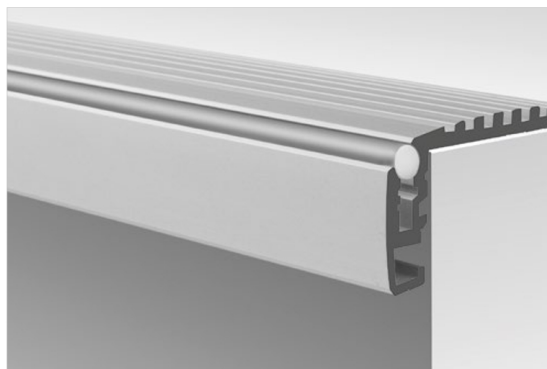
If you are interested in longer lengths than one meter, write to us we will quote the delivery cost to you. Transport companies expect additional charges for long shipments.

For each country is different maximum length of the profile that we can send. It does not depend on us only by courier. We also do service cutting aluminum profiles to the indicated size - write or call get comprehensive information.

Profile do oświetlenia poręczy, schodów, korytarzy, ciągów pieszych /  
Profile zur Beleuchtung von Geländern, Treppen, Fluren und Bereichen des Fußverkehrs

## STEKO

REF. 18018



Elementy antypoślizgowe.  
Odporność mechaniczna.  
Mały gabaryt.

### PRZEZNACZENIE PRODUKTU:

- zabezpieczenie krawędzi stopnia ze zintegrowanym oświetleniem ostrzegawczym.

### MONTAŻ:

- za pomocą wkrętów odpowiednio dobranych do rodzaju podłoża.

### DODATKOWE INFORMACJE:

- pasek LED ukryty pod sznurem silikonowym.



Antirutsch-Elemente.  
Hohe mechanische Festigkeit.  
Kleine Abmessungen.

### ANWENDUNG

- Absicherung des Treppenrandes mit integrierter Warnbeleuchtung

### MONTAGE

- mit Schrauben angepasst an den Untergrund

### ZUSÄTZLICHE INFORMATIONEN

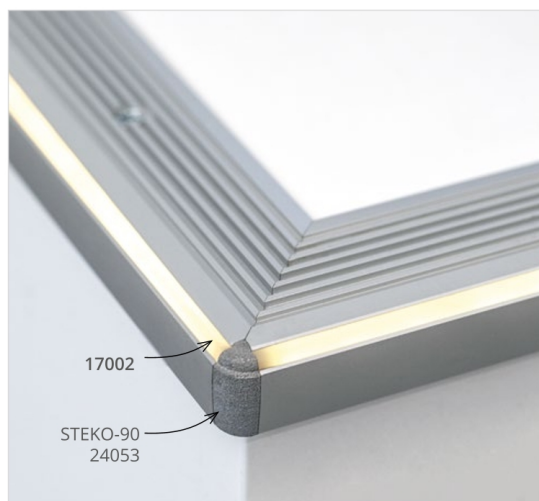
- LED-Streifen versteckt unter dem Silikonschnur

### profil / Profil

długość / Länge	szerokość LED / LED-Breite	wykończenie powierzchni / Oberfläche	numer artykułu / Artikelnummer
1 m	7 mm	● Srebrny anodowany / Silber eloxiert	<b>18018ANODA_1</b>
2 m			<b>18018ANODA_2</b>
3 m			<b>18018ANODA_3</b>
1 m	7 mm	● Czarny anodowany / Schwarz eloxiert	<b>18018K7_1</b>
2 m			<b>18018K7_2</b>
3 m			<b>18018K7_3</b>

### akcesoria / Zubehör

zaślepki szare / graue Endkappen	inne akcesoria / sonstiges Zubehör
STEKO-L <b>24038</b>	SZNUR ANTYPÓŚLI- ZGOWY FI-5 / ANTI-RUTSCH STREIFEN FI-5 <b>17002</b>
STEKO-P <b>24037</b>	
STEKO-90 <b>24053</b>	
zaślepki czarne / schwarze Endkappen	DŁAWNICA 8.8X1.2 / KABELVERSCHRAU- BUNG 8.8X1.2 <b>00802</b>
STEKO-L <b>24246</b>	
STEKO-P <b>24247</b>	

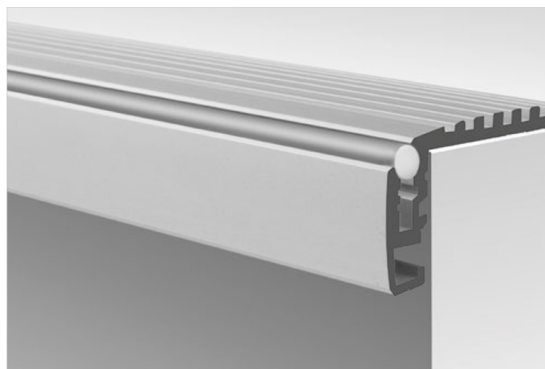




Extrusions for handrail, stair, corridor and footpath lighting /  
Perfiles para barandillas, escalones, pasillos e iluminación de caminos

## STEKO

REF. 18018



Small size.  
Non-slip tread.  
Mechanical resistance.

### APPLICATION

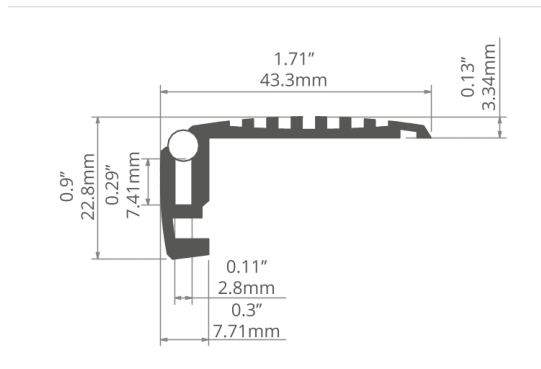
- step edge protection with integrated warning lighting.

### ASSEMBLY

- with screws appropriately selected for the mounting surface.

### ADDITIONAL INFORMATION

- LED strip concealed under a silicone cord.
- a smaller and economical version of the STEP extrusion designed for lighter conditions of use.



Tamaño pequeño.  
Pisada antideslizante.  
Resistencia mecánica.

### APLICACIÓN

- protección de borde de paso con luces de advertencia integradas.

### MONTAJE

- con tornillos adecuadamente seleccionados para la superficie de montaje.

### INFORMACIÓN ADICIONAL

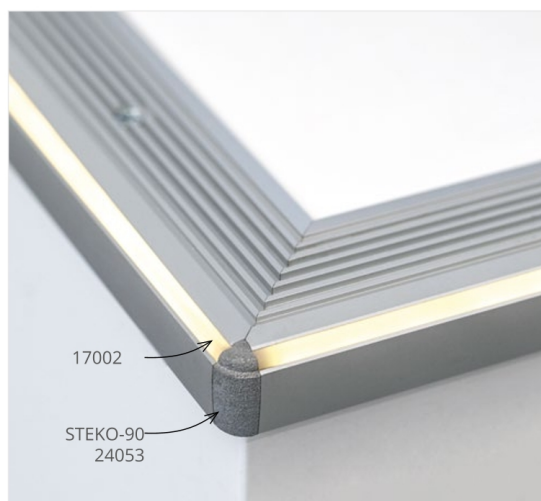
- tira de LED oculta bajo un cordón de silicona.
- una versión más pequeña y económica de la extrusión STEP diseñada para condiciones de uso más ligeras.

### extrusion / perfil

length / longitud	space for LED strip / espacio para tira de LED	surface finish / terminado de superficie	reference number / número de artículo
39.4" / 1 m	0.27" / 7 mm	● Silver anodized / Ánodo de plata	<b>18018ANODA_1</b>
78.7" / 2 m			<b>18018ANODA_2</b>
118" / 3 m			<b>18018ANODA_3</b>
39.4" / 1 m		● Black anodized / Negro anodizado	<b>18018K7_1</b>
78.7" / 2 m			<b>18018K7_2</b>
118" / 3 m			<b>18018K7_3</b>

### accessories / accesorios

grey end caps / tapas finales gris	other accessories / otros accesorios
STEKO-L <b>24038</b>	8.8x1.2 GLAND / GLÁNDULA <b>00802</b>
STEKO-P <b>24037</b>	ANTI-SLIP RUBBER STRIP FI-5 / TIRA DE GOMA ANTIDESLIZANTE FI-5 <b>17002</b>
STEKO-90 <b>24053</b>	
black end caps / tapas finales negro	
STEKO-L <b>24246</b>	
STEKO-P <b>24247</b>	



Profile STEKO is a stair profile made of high-grade aluminum, which has been subjected to double anodizing, which has a high resistance to corrosion and mechanical damage. Profile has a utility in the LED light sources emitting in the headspace. Lighting can be used LEDs in the side of the so-called. "Side view", where the width of the strip does not exceed 7mm. LEDs are recommended to override a special non-slip rope, which is complete with profile STEKO, but is also available as a completely separate article.

The profile has been designed so that it served as a channel for installation LED strip luminous side. The channel is closed with a transparent silicone cord, which aims to act as a shield. The anti-slip rubber strip should be a diameter such that it was possible to mount a so-called. "interference". If we know that the profile STEKO comes into contact with water or moisture LED strip should be placed on the t-shirts seal. In addition, such a construction can be also prepared for example sealed. Silicone.

The LEDs can be embedded in the channel, so that shone in the direction of the rope of silicone, it will be visible points of light, welcome light will be strong. They can also be mounted in a manner in which they shine down the channel, the lines can achieve the effect of light and the effect is very subdued light.

STEKO profile in front of a channel for the current connection, which is also the conduit for the cable. To carry out the power cord from the LED strip to the channel for the wire, it is necessary drilling hole at the marked spot on the inside of the profile.

Profile STEKO is designed for mounting on the edges of stairs, platforms, and many others. Its main task is to protect the edge of the steps and signaling them light.

Installation profile to the ground is carried out using the appropriate screws with countersunk or bevel - lens. Holes for screws should be performed depending on the needs of the lines, which are marked on the inside of the profile. The recommended distance between the screws should be approximately 120 mm. The outer side of the profile openings should be finished so that the screw heads were well below the upper edge serrations.

To be able to apply a profile on the outside do the luminaire of high tightness, the class resistance against the ingress of dirt, dust and water will be IP 67.

Profile are dedicated accessory - polypropylene caps. Their use is intended to protect the profile against the ingress of dust into it and undesirable elements that could lead to the dirt strip, and deterioration in the quality of light.

We invite you to familiarize yourself with our offer.

STEKO profile is designed for mounting on the edges of stairs, platforms, etc. It is designed to protect the edges of steps and indicate them światłem. Jest smaller version of STEP profile designed for softer conditions eksploatacji. Montaż STEKO to the surface by means of the appropriate screws with countersunk or Tapered lens. Screw holes in the profile STEKO carried out depending on the needs of the lines marked on the left side of the profile. The distance between the screws, we recommend to keep within the top 120 mm. Od profile page openings must be finished so that the phase of the screw heads were well below the upper edge of the ryflowania. W profile is provided for mounting channel LED strip light emitting side. LED strip width is 6mm. LED channel is closed for a clear, silicone cord that acts as a shield. Silicone cord diameter is chosen so that it can be mounted on a "push-fit". Profile In case of contact with water or moisture LED strip should be placed on the t-shirts for LED uszczelniającej. Kanał after installation can also be sealed for example. Suitably chosen silicone. LEDs can be deposited in the channel so that it shone in the direction of the silicone cord, then the visible points of light, but the light is visible as well mocne. Można mount LEDs to shine down the channel, then you can achieve the effect of light lines and the effect of light is stonowany. Profil STEKO in front of the terminal has a channel for forming a current passage for przewodu. Aby carry out the power cord from the LED to the channel strip for cable, you need to drill a hole at the marked spot on the inner side of the profile. STEKO accessories.: - Cord Covers STEKO silicone-left and right-screws

Stair profile is made of high-grade, double-anodized aluminum with the option of LED glowing in the upper half space. Use for lighting LEDs on the side called. "Side view" with a width of 7 mm tapes that the message of a special non-slip rope. Rope slip occurs in the complete profile STEKO, is also available as a separate article. Installation of the base profile is implemented using the appropriate screws with countersunk or conical lens. Screw holes in the profile STEKO carried out depending on the needs of the lines marked on the inner side of the profile. The recommended distance between the screws should copper about 120 mm. On the outer side of the profile openings must be finished phase so that the screw heads are far below the upper edge serrations. As an accessory to the profile are dedicated polypropylene caps. The use of caps protect from dust profile and undesirable elements that can cause contamination LED strip, thus worsening the lighting parameters. You can perform a luminaire with high tightness, whose class resistance against ingress of solid objects, dust and water will be IP 67.

Product description:

Material: anodized aluminum

Standard lengths: 1m, (we sell profiles in sections 1 meter)

Mounting: mounting adhesives, double-sided tape (accessories)

Ending: Plastic plug (accessory)

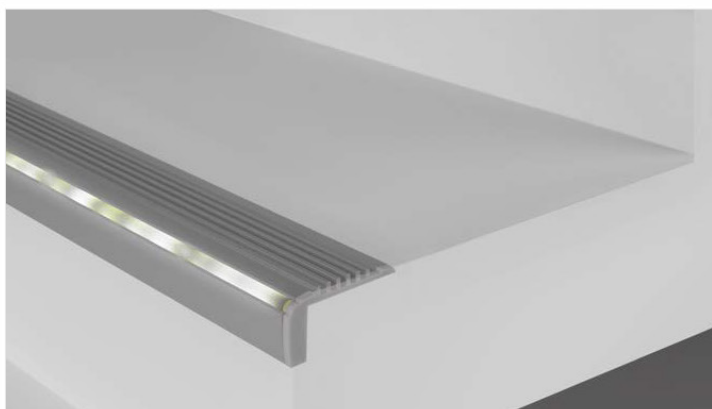
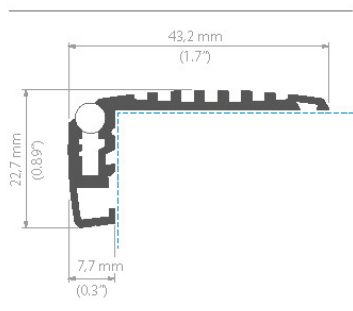
Certificate: CE

## STEKO-KPL

PL / **Profil przeznaczony do montażu na krawędziach stopni schodów, podestów itp. sygnalizuje o nich światłem.**

EN / **An extrusion intended for installation on edges of stairs, platforms etc., which signals their presence with a light.**

DE / **Das Profil zur Montage an den Treppen- und Treppenabsätzen u. a. Es signalisiert mit Licht die einzelnen Treppen.**









### STEKO-KPL

dlugość length Länge	szerokość paska LED LED strip width Breite LED Band	wykończenie powierzchni surface finish Oberfläche	numer artykułu article number Artikelnummer
1m (standard) 2m (standard) 3m (standard) 3 - 6m *	1 x LED strip max. 7 mm (LED świecące w bok, side emitting LED, das seitlich eingebracht wird)	● anodowany / anodized / eloxiert	18018ANODA

\* Na specjalne zamówienie / Special order / Sonderbestellung.

akcesoria / accessories / Zubehör

ZAŚLEPKI / END CAP / ENDKAPPEN

	STEKO	zaślepka prawa / right end cap / rechts Endkappe	PP	 jasno szara / light gray / hellgrau	24037
	STEKO	zaślepka lewa / left end cap / links Endkappe	PP	 jasno szara / light gray / hellgrau	24038
	STEKO-90	zaślepka narożna / corner end cap / Endkappe	PP	 jasno szara / light gray / hellgrau	24053

AKCESORIA / ACCESSORIES / ACCESSORIES

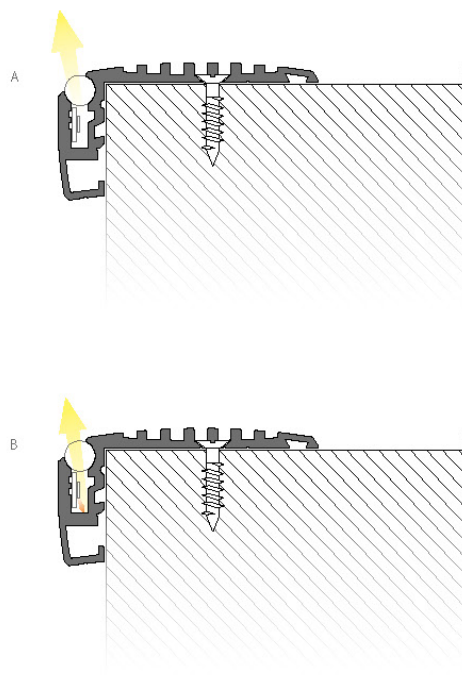
	sznur antypoślizgowy do STEKO / anti-slip rubber strip for STEKO / Anti-Rutsch Streifen für STEKO		silikon / silicon / Silicon		17002
---	--	--	-----------------------------	--	-------



STEKO-KPL



STEKO-KPL



#### PROSTY MONTAŻ

Profil ochrania krawędzie stopni oraz sygnalizuje o nich światłem. W profilu przewidziany jest kanał na montaż paska LED świecącego bokiem. Kanał dla LED zamykany jest przezroczystym, sznurem silikonowym, który spełnia rolę osłonki.

- A. Jeżeli strumień światła zostanie skierowany bezpośrednio ku górze otrzymamy mocne światło oraz widoczne punkty świetlne.
- B. Jeżeli strumień światła zostanie skierowany w dół otrzymamy odbite światło stonowane a punkty świetlne będą delikatnie rozmyte.

#### SIMPLE MOUNTING

The extrusion secures to the edges of steps and signals their presence with light. The extrusion includes a slot for installation of the LED strip that glows laterally. The slot for the LED is covered with transparent silicone cord, which acts as a lens.

- A. If the light stream will be directed directly upwards, we will obtain a strong light and visible light points.
- B. If the light stream will be directed downwards, we will obtain a reflected toned light and the light points will be slightly blurry.

#### EINFACHE MONTAGE

Das Profil schützt die Kanten der Treppen und signalisiert sie mit Licht. Im Profil wurde ein Kanal zum LED-Band vorgesehen, das eine Seitenbeleuchtung spendet. Der LED-Kanal wird mit einer transparenten Silikonseil geschlossenen, die die Abdeckungsrolle spielt.

- A. Wenn der Lichtstrahl direkt nach oben gerichtet wird, gewinnt man starkes Licht und sichtbare Lichtpunkte.
- B. Wenn der Lichtstrahl nach unten gerichtet wird, gewinnt man abgetöntes, reflektiertes Licht und somit verschwommene Lichtpunkte.

## STEKO KPL. Profil ekonomiczny Economical profile Wirtschaftliches Profil

108



### STEKO KPL. PROFIL

długość  
length  
Länge

szerokość paska LED  
LED strip width  
Breite LED Band

wykończenie powierzchni  
surface finish  
Oberfläche

numer artykułu  
article number  
Artikelnummer



1m (standard)  
2m (standard)  
3m \*  
3 - 6m \*\*

1 x LED strip  
max. 6mm  
ledy świecące w bok  
side emitting LED  
das seitlich eingebracht wird

anodowany  
anodized  
eloxiert

18018

Sznur antypoślizgowy w komplecie / anti-slip rubber strip included / Anti-Rutsch Streifen inklusive

### STEKO - ZAŚLEPKI / END CAPS / ENDKAPPEN



### SZNUR ANTYPÓŚLIZGOWY / ANTI-SLIP RUBBER STRIP / ANTI-RUTSCH STREIFEN

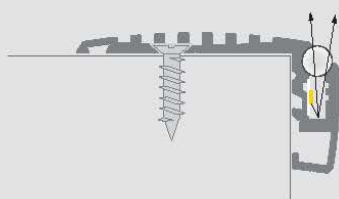


LED Profile

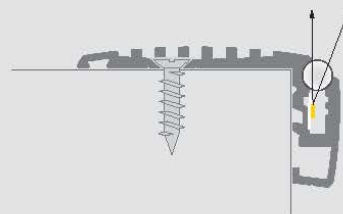
\* Dostępne po uzgodnieniu z działem handlowym / Available by arrangement with sales department / verfügbar nach Absprache mit dem Vertrieb.

\*\* Na specjalne zamówienie / Special order / Sonderbestellung.





**Światło stonowane**, mniej widoczne punkty świetlne  
**Subdued light**, less visible points of light  
**gedämpftes Licht**, weniger sichtbare Lichtpunkte



**Mocne światło**, widoczne punkty świetlne  
**Powerful light**, visible points of light  
**leistungsstarkes Licht**, sichtbare Lichtpunkte



