

Link to the product: <https://stair-lighting.com/profiel-led-mod-koze-50-p-2464.html>

## Profiel LED MOD-KOZE-50

Price	<b>76.08 Euro</b>
Availability	<b>Available</b>
Shipping time	<b>5 days</b>
Number	<b>2464</b>
Manufacturer	<b>KLUS</b>

### Product description

#### Important Information

The purchase a piece in the store means the purchase 1 linear meter of the profile or cover

If you want to buy a profile that has a length of 2 meters you have to buy 2 pieces, 3 meters you have to buy 3 pieces, and the multitude of quantity when ordering.

The total length of the aluminum profile or the panel to the profile - is the total quantity of the piece number that was bought in the store.

The choice of the appropriate shipping method will take place at the end of the order process.

[The details of the shipping method and packaging of the aluminum profiles you will find here \(click in the link\)](#)

The product you have selected contains only - aluminum profile - does not include the accessories located in the Accessories tab.

Additional accessories like covers, end caps, electricity conductive end cap, mounting bracket, fasteners, mounting springs, proximity switch, micro switch, mounting system and others are available under "Accessories".

If you are interested in longer lengths than one meter, write to us we will quote the delivery cost to you. Transport companies expect additional charges for long shipments.

For each country is different maximum length of the profile that we can send. It does not depend on us only by courier.

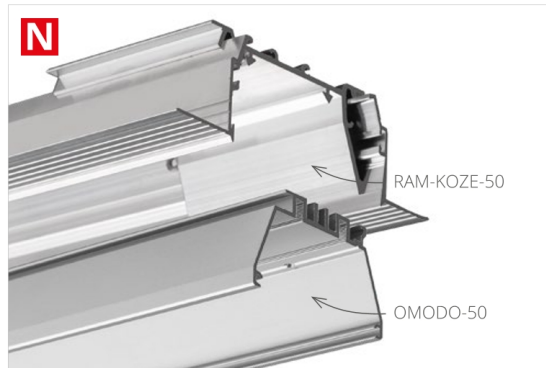
We also do service cutting aluminum profiles to the indicated size - write or call get comprehensive information.

Profile architektoniczne /  
Architekturprofile

## MOD-KOZE-50

REF. 18055 - RAM-KOZE-50

REF. 18053 - OMODO-50



Ażurowa konstrukcja kanału montażowego i jego przestawne elementy (mostki) umożliwiają ukrywanie zasilaczy i innych urządzeń elektronicznych w dowolnym odcinku oprawy LED, niwelując potrzebę stosowania nieestetycznych rewizji w sufitach.

Możliwość uzyskania oprawy LED o niskim współczynniku ośnienia UGR poniżej 19 (przy zastosowaniu osłony JUN-50)

### PRZEZNACZENIE PRODUKTU:

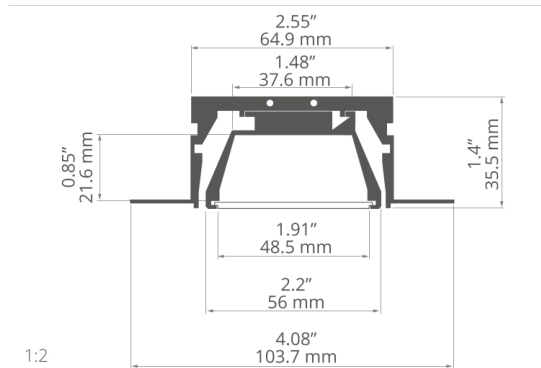
- do tworzenia sufitowych, wbudowanych opraw LED, umożliwiających systemowy montaż i serwis,
- Do tworzenia precyzyjnych kanałów montażowych w płytach kartonowo - gipsowych dla opraw LED,
- do budowania opraw LED z możliwością uzyskania współczynnika ośnienia  $UGR \leq 19$ .

### MONTAŻ:

- osadzenie „kanału montażowego” RAM-KOZE-50 w powierzchni sufitu z karton – gipsu. Następnie montaż „rdzenia” oprawy OMODO-50 w „kanał montażowy” RAM-KOZE-50.

### DODATKOWE INFORMACJE:

- oprawa opracowana jest tak, że „rdzeń” oprawy (profil z taśmami LED, zasilaczem, przewodami i zaślepkami) w całości można przygotować wcześniej, w warunkach fabrycznych. W miejscu przeznaczenia montaż ogranicza się do wpięcia gotowego (uzbrojonego) „rdzenia” (OMODO-50) we wcześniej zamontowany kanał montażowy (RAM-KOZE-50).



Dank der durchbrochenen Struktur des Montagekanals und seiner einstellbaren Elemente (Brücken) können Netzteile und andere elektronische Geräte in einem beliebigen Bereich der LED-Leuchte versteckt werden, sodass unschöne Revisionsöffnungen in den Decken weitgehend entbehrlich sind.

Möglichkeit, eine LED-Leuchte mit einem geringem Blendfaktor UGR unter 19 zu erhalten (mit der Abdeckung JUN-50).

### ANWENDUNG

- für LED-Deckeneinbauleuchten, die als System installiert und gewartet werden können
- zur Herstellung präziser Montagekanäle in GKP für LED-Leuchten
- zum Bau von LED-Leuchten, die einen Blendfaktor  $UGR \leq 19$  erreichen.



### MONTAGE

- Einbettung des „Montagekanals” (RAM-KOZE-50) in der GK-Decke. Dann erfolgt die Montage des „Kerns” der Leuchte (OMODO-50) im „Montagekanal” (RAM-KOZE-50).

### ZUSÄTZLICHE INFORMATIONEN

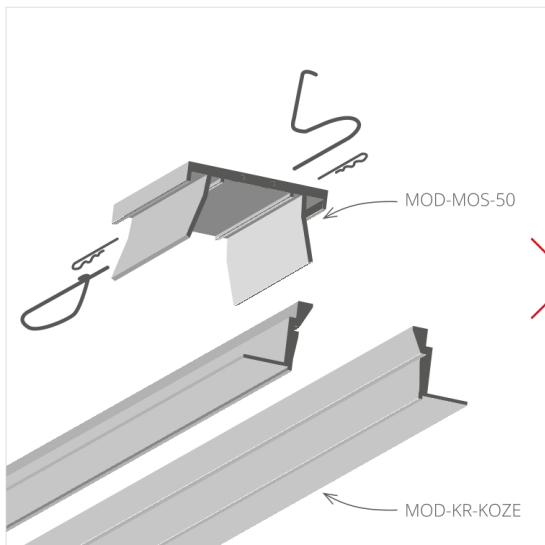
- die Leuchte ist so konzipiert, dass der „Kern” der Leuchte (Profil mit LED-Bändern, Netzteil, Leitungen und Endkappen) unter Werksbedingungen vorbereitet werden kann. Am Installationsort beschränkt sich die Montage darauf, den fertigen „Kern” (OMODO-50) in den zuvor installierten Montagekanal (RAM-KOZE-50) einzurasten.

### profil / Profil

długość / Länge	szerokość LED / LED-Breite	wykończenie powierzchni / Oberfläche	numer artykułu / Artikelnummer
1 m	30 mm	 Nieanodowany (surowe aluminium) / Nicht eloxiert (Aluminum Natur)	<b>18055NA_1 - RAM-KOZE-50</b>
2 m			<b>18055NA_2 - RAM-KOZE-50</b>
3 m			<b>18055NA_3 - RAM-KOZE-50</b>
1 m		 Srebrny anodowany / Silber eloxiert	<b>18053ANODA_1 - OMODO-50</b>
2 m			<b>18053ANODA_2 - OMODO-50</b>
3 m			<b>18053ANODA_3 - OMODO-50</b>



## MOD-KOZE-50



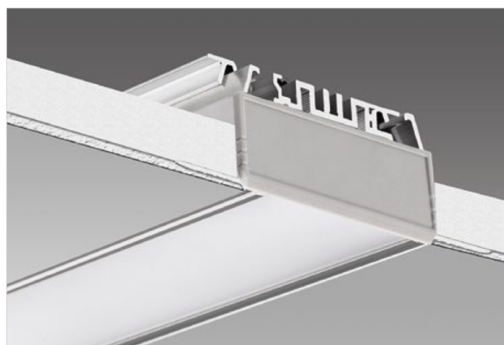
### akcesoria / Zubehör

osłony mleczne /  
opale Abdeckungen

POL-50 17058\_2

osłony pryzmatyczne /  
prismatisch Abdeckungen

JUN-50 17056\_1.5



zaślepki szare /  
graue Endkappen

OMODO-50 24353

RAM-TEZE-50 24350

sprężyny mocujące /  
Befestigungsfedern

KR 42737

RAM-1 42738

łączniki /  
Verbindungsstücke

ZM-NA-180 42724

ZM-NA-90 42723

ZM-NA-135 42725

ZM-NA-PION-90 42726

ZM-NA-PION-135 42727

profil /  
Profil

MOD-KR-KOZE C1772

OMODO-50 18053

MOD-MOS-50 C1773

RAM-KOZE-50 18055

inne akcesoria /  
sonstiges Zubehör

DŁAWNICA M8X1 /  
KABELVERSCHRAU-  
BUNG M8X1 42265

SZNUROWY SILIKONOWY KR /  
SILIKON-SEIL KR 24352

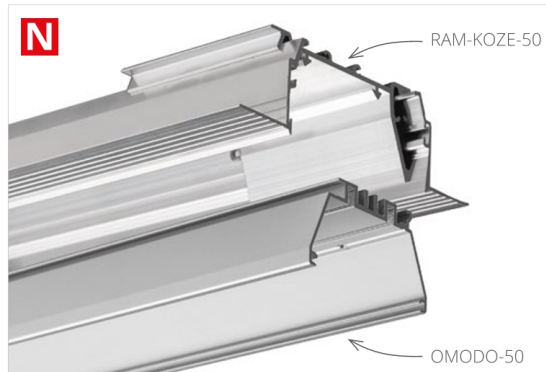
KLIN / KEIL 70397



Architectural extrusions /  
Perfiles arquitectónicos

## MOD-KOZE-50

REF. 18055 - RAM-KOZE-50  
REF. 18053 - OMODO-50



The openwork structure of the mounting channel and its adjustable elements (bridges) allow placing power supplies and other electronic devices in any section of the LED lighting fixture, eliminating the need for unsightly inspection openings in the ceilings. A LED lighting fixture with a low glare rating UGR below 19 (with the JUN-50 Prismatic cover) can be built. The extrusion can be mounted "from below" and thus build ceiling lighting fixtures that run "wall to wall".

### APPLICATION

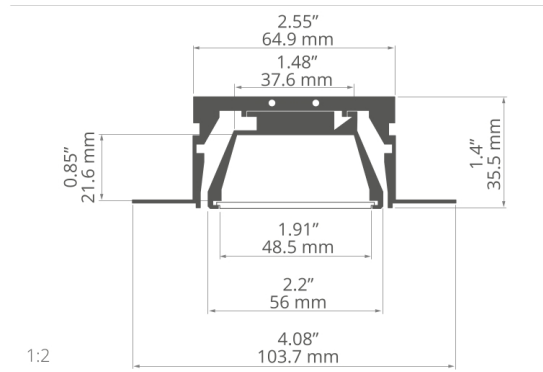
- for the construction of professional lighting fixtures with a cover mounted flush with the ceiling or wall surface.
- for LED lighting fixtures recessed in the ceiling, installed and serviced as a system.
- for creating precise mounting channels in drywall for LED lighting fixtures.
- for building LED lighting fixtures capable of reaching a glare rating UGR  $\leq 19$ .

### ASSEMBLY

- embedding the "mounting channel" (RAM-KOZE-50) in the surface of a drywall ceiling. Mounting the "core" of the lighting fixture (OMODO-50) in the "mounting channel" (RAM-KOZE-50).

### ADDITIONAL INFORMATION

- the lighting fixture is designed so that the "core" of the lighting fixture (extrusion with LED tapes, power supply, wires and end caps) can be prepared in advance, in factory conditions. The only thing to be done at the installation site is to insert the prepared "core" (OMODO-50) into the pre-installed mounting channel (RAM-KOZE-50).



La estructura calada del canal de montaje y sus elementos desplazables (puentes) permiten colocar fuentes de alimentación y otros dispositivos electrónicos en cualquier sección de la luminaria LED, eliminando la necesidad de usar antiestéticas tapas de revisión en techos.

Posibilidad de obtener una luminaria de LED con un índice de deslumbramiento UGR inferior a 19 (usando el difusor JUN-50).

El montaje "desde abajo" ofrece la posibilidad de diseñar luminarias en el techo "de pared a pared".

### APPLICATION

- para crear luminarias profesionales con difusor a ras de la superficie del techo o la pared.
- para crear luminarias LED empotradas de techo que permiten un montaje y mantenimiento sistemático.
- para crear canales de montaje precisos en pared de yeso laminado para luminarias LED.
- para crear luminarias LED con posibilidad de lograr un índice de deslumbramiento UGR  $\leq 19$ .



### ASSEMBLY

- instalación del "canal de montaje" (RAM-KOZE-50) en la superficie del techo de pladur. Montaje del "núcleo" de la luminaria (OMODO-50) en el "canal de montaje" (RAM-KOZE-50).

### ADDITIONAL INFORMATION

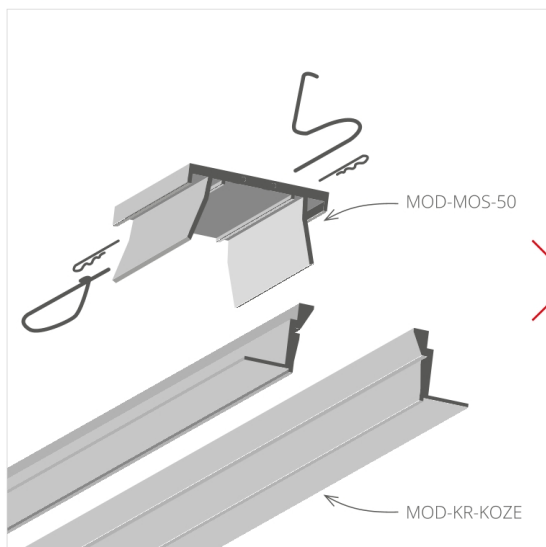
- la luminaria está elaborada de modo que el "núcleo" (el perfil con las tiras de LED, la fuente de alimentación, los cables) se puede preparar en su totalidad previamente en condiciones de fábrica. En el lugar de montaje solo hay que colocar el "núcleo" (OMODO-50) listo (armado) en el canal de montaje previamente montado (RAM-KOZE-50).

### extrusion / perfil

length / longitud	space for LED strip / espacio para tira de LED	surface finish / terminado de superficie	reference number / número de artículo
39.4" / 1 m	1.18" / 30 mm	 Non anodized (raw) / Aluminio crudo (no anodizado)	18055NA_1 - RAM-KOZE-50
78.7" / 2 m			18055NA_2 - RAM-KOZE-50
118" / 3 m			18055NA_3 - RAM-KOZE-50
39.4" / 1 m		 Silver anodized / Ánodo de plata	18053ANODA_1 - OMODO-50
78.7" / 2 m			18053ANODA_2 - OMODO-50
118" / 3 m			18053ANODA_3 - OMODO-50



## MOD-KOZE-50



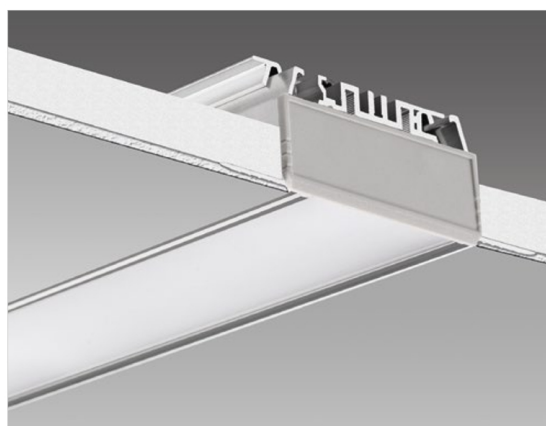
### accessories / accesorios

frosted covers /  
difusores escarchadas

POL-50 17058\_2

prismatic covers /  
difusores prismático

JUN-50 17056\_1.5



grey end caps /  
tapas finales gris

OMODO-50 24353

RAM-TEZE-50 24350

mounting springs /  
resortes de montaje

KR 42737

RAM-1 42738

connectors /  
conectores

ZM-NA-180 42724

ZM-NA-90 42723

ZM-NA-135 42725

ZM-NA-PION-90 42726

ZM-NA-PION-135 42727

extrusions /  
perfiles

MOD-KR-KOZE C1772

OMODO-50 18053

MOD-MOS-50 C1773

RAM-KOZE-50 18055

other accessories /  
otros accesorios

GLAND / GLÁNDULA 8.8X1 42265

SILICONE CORD KR /  
CABLE DE SILICONA 24352

WEDGE / CUÑA 70397



## **MOD-KOZE-50 = OMODO50 + RAM-KOZE-50**

- The open style structure of the mounting channel and its adjustable elements (bridges) allow placing power supplies and other electronic devices in any section of the LED lighting fixture, eliminating the need for unsightly inspection openings in the ceilings
- The lighting fixture can be removed and remounted without damaging the ceiling
- An LED lighting fixture with a low glare rating UGR below 19 can be built when utilizing the JUN-50 prismatic cover
- The profile can be mounted „from below“ allowing to build ceiling lighting fixtures that run „wall to wall“
- Either LED tapes or LED current modules can be used
- Linear and polygonal connections are possible with ZM connectors
- Secure mounting, resistant to vibration

### **Application**

- for the construction of professional lighting fixtures with a cover mounted flush with the ceiling or wall surface
- for LED lighting fixtures recessed in the ceiling, installed and serviced as a system
- for creating precise mounting channels in drywall for LED lighting fixtures
- for building LED lighting fixtures that can have a glare rating  $UGR \leq 19$

### **Assembly**

- embedding the „mounting channel“ (RAM-KOZE-50) in the surface of a drywall ceiling using springs and glue.
- mounting the "core" of the lighting fixture (OMODO-50) in the "mounting channel" (RAM-KOZE-50)

### **Additional information**

- MOD-KOZE-50 fixtures are designed for 3 LED strips (10 mm wide), 4 strips (8 mm wide) or a LED current module up to 24 mm wide
- the lighting fixture is designed so that the "core" of the lighting fixture (profile with LED tapes, power supply, wires and end caps) can be prepared in advance, in factory conditions
- the only thing to be done at the installation site is to insert the prepared "core" (OMODO-50) into the pre-installed mounting channel (RAM-KOZE-50)
- the width of the gap in the drywall for RAM-KOZE-50: from 66 mm to 71 mm
- two locking bolts must be used for every 1m of lighting fixture. For lighting fixtures shorter than 1m, at least 2 bolts
- the gaps between the edges of the mounting channel and the "core" of the fixture can be finished with a dedicated silicone cord

The following covers are compatible with MOD-KOZE-50:

- JUN-50 prismatic material: PMMA, length: 1.5 m, UV resistant, glare rating  $UGR \leq 19$  possible
- POL-50 frosted material: PC, lengths: 1 m, 2 m, 3 m, UV resistant

