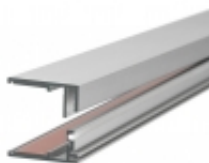


Link to the product: <https://stair-lighting.com/profil-led-krav-810-p-1395.html>

Profil LED KRAV-810

Price	18.71 Euro
Availability	Available
Shipping time	5 days
Number	1395
Manufacturer	KLUS

Product description

Important Information

The purchase a piece in the store means the purchase 1 linear meter of the profile or cover

If you want to buy a profile that has a length of 2 meters you have to buy 2 pieces, 3 meters you have to buy 3 pieces, and the multitude of quantity when ordering.

The total length of the aluminum profile or the panel to the profile - is the total quantity of the piece number that was bought in the store.

The choice of the appropriate shipping method will take place at the end of the order process.

[The details of the shipping method and packaging of the aluminum profiles you will find here \(click in the link\)](#)

Price for the same profile without additional accessories.

The product you have selected contains only - aluminum profile - does not include the accessories located in the Accessories tab.

Additional accessories like covers, end caps, electricity conductive end cap, mounting bracket, fasteners, mounting springs, proximity switch, micro switch, mounting system and others are available under "Accessories".

If you are interested in longer lengths than one meter, write to us we will quote the delivery cost to you. Transport companies expect additional charges for long shipments.

For each country is different maximum length of the profile that we can send. It does not depend on us only by courier.

We also do service cutting aluminum profiles to the indicated size - write or call get comprehensive information.

Profil do podświetlania krawędzi szyb, tworzyw /
Profil für Glassantenbeleuchtung

KRAV-810

REF. 18016



Łatwy i pewny montaż do krawędzi płyt.
Wygodny montaż pasków led.
Przystosowany do płyt o grubościach od 8 mm do 10 mm.

PRZEZNACZENIE PRODUKTU:

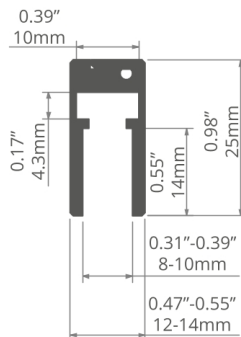
- krawędziowe podświetlenie przezroczystych, transparentnych i mlecznych płyt.

MONTAŻ:

- montaż z zastosowaniem taśm samoprzylepnych i na "click".

DODATKOWE INFORMACJE:

- profil jest oprawą oświetleniową, nie pełni funkcji konstrukcyjnej.



Leichte und sichere Montage an dem Plattenrand.
Bequeme Montage von Led-Streifen.
Angepasst an 8 mm bis 10 mm dicke Platten.

ANWENDUNG

- Randbeleuchtung durchsichtiger und milchiger Platten

MONTAGE

- Montage mit Klebebändern und durch Einrasten

ZUSÄTZLICHE INFORMATIONEN

- das Profil ist eine Leuchte, kein Bauteil

profil / Profil

długość / Länge	szerokość LED / LED-Breite	wykończenie powierzchni / Oberfläche	numer artykułu / Artikelnummer
1 m	10 mm	● Srebrny anodowany / Silber eloxiert	18016ANODAZM_1
2 m			18016ANODAZM_2
3 m			18016ANODAZM_3

akcesoria / Zubehör

zaśleпки szare / graue Endkappen	
KRAV-810	24028



Extrusions for edge lighting of glass, plastic /
Perfiles para iluminación de bordes de vidrio y plástico

KRAV-810

REF. 18016



Easy and secure mounting to panel edges.
Convenient installation of LED strips.
Adapted for panels with a thickness
of (0.31"- 0.39" / 8-10 mm).

APPLICATION

- edge illumination of transparent and frosted panels.

ASSEMBLY

- installation using self-adhesive tape and clasps.

ADDITIONAL INFORMATION

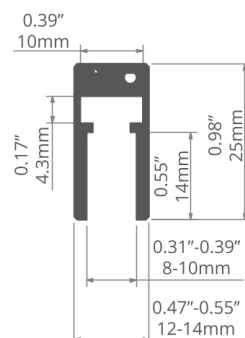
- the extrusion is a lighting fixture, not a structural element.

extrusion / perfil

length / longitud	space for LED strip / espacio para tira de LED	surface finish / terminado de superficie	reference number / número de artículo
39.4" / 1 m	0.39" / 10 mm	● Silver anodized / Ánodo de plata	18016ANODAZM_1
78.7" / 2 m			18016ANODAZM_2
118" / 3 m			18016ANODAZM_3

accessories / accesorios

grey end caps / tapas finales gris	
KRAV-810	24028



Montaje fácil y seguro a los bordes del panel.
Instalación conveniente de tiras del LED.
Adaptado para paneles con un espesor
de (0.31"- 0.39" / 8-10 mm).

APLICACIÓN

- iluminación del borde de los paneles transparentes y escarchadas.

MONTAJE

- instalación con cinta adhesiva y broches.

INFORMACIÓN ADICIONAL

- el perfil es una luminaria, no un elemento estructural.



KRAV extrusions are not construction extrusions!

Profile LED Krav 810 is made from high quality, double anodized aluminum, making it resistant to the processes of corrosion and mechanical damage. This profile is dedicated to the tapes or strips of a width not exceeding:

6mm (profile Krav 56 of glass with a thickness of 5mm)

8mm (Profile Krav 56 of glass with a thickness of 6mm)

10,8mm (profile Krav 810)

with LED light sources.

Due to the unique shape of which has a profile can be used to illuminate the edge glass or various types of plastic with a thickness of 5 to 6 mm (profile Krav 56) or from 8 to 10 mm (profile Krav 810). Profile is used in highlighting signs, advertising banners, inscriptions or graphic characters. It can also be used for the production of lighting fixtures, which the project will be based on the method of backlight edge. Typically, these fixtures are used in kitchens, living rooms, as well as art galleries and museums.

The LED KRAV profile 810 comprises two profiles: KRAV-D (designed to be mounted LED strip) and KRAV-Z (locking profile). Both profiles are equipped with double-sided adhesive tape and a string of silicone. Both of these elements make it easier to assemble the structure and ensure its subsequent life.

To get the maximum pressure of glass or plastic profiles should be applied both on the glass and press it evenly.

Profile are dedicated polypropylene caps: Krav-D and Krav-Z (a pair on one side of the profile). Cap Krav-D is called. "Groove" and Krav-Z "pocket", making it possible to obscure the gap arising during installation in places where the panes are thicker.

It does not matter at which point both mount plugs. This may be before as well as after assembly of the two profiles is composed. However, the second option plug Krav-D is assumed as the first, so that the entire structure is properly filed.

It should take into account that the removal may cause damage to the sheet. In order to facilitate such a profile can be fixed with glue and the other not by using an adhesive double-sided tape.

The task of the end caps is primarily to protect against the ingress of dust and many other unwanted objects that can cause stains, thereby worsening performance LED light strip.

All the necessary components, which can be useful during installation profiles can be found on our website under "Accessories".

We invite you to familiarize yourself with our offer.

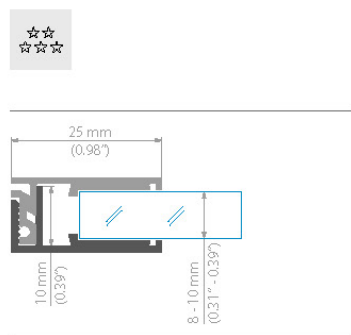
0.5 / Profil do podświetlania krawędzi szyb, tworzyw / Extrusions for edge lighting of glass, plastic / Profil fuer Glassantenbeleuchtung

KRAV-810

PL / **Profil służący do krawędziowego podświetlania szyb** lub innych tafli przezroczystych o grubości 8-10 mm.

EN / **An extrusion used for edge illumination of glass** and other transparent panels of 8-10 mm thickness.

DE / **Das Profil zur Randbeleuchtung der Scheiben** oder anderen transparenten Flächen von der Dicke 8-10 mm.



KRAV-810

długość length Länge	szerokość paska LED LED strip width Breite LED Band	wykończenie powierzchni surface finish Oberfläche	numer artykułu article number Artikelnummer
1m (standard) 2m (standard) 3m (standard) 3-6m *	1 x LED strip max. 6 mm	● anodowany / anodized / eloxiert	18016ANODAZM

* Na specjalne zamówienie / Special order / Sonderbestellung.

ZAŚLEPKI / END CAP / ENDKAPPEN

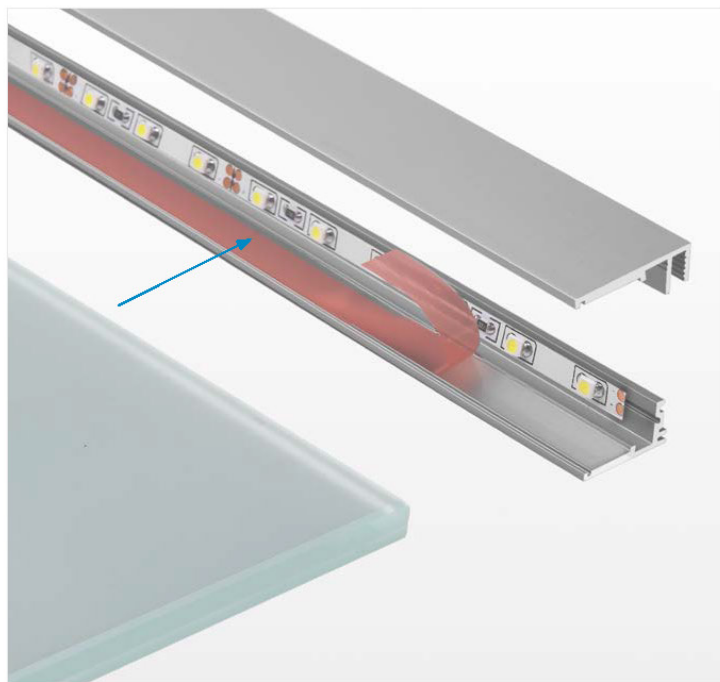


KRAV-810 KPL. zaślepka podstawowa / basic end cap / Endkappe

PS

jasno szara / light gray / hellgrau

24028



ŁATWY MONTAŻ LED

Na kompletny profil KRAV-810 składają się dwa profile: jeden przystosowany do montażu pasków LED oraz drugi profil zamykający. Ponadto profile wyposażone są w mocującą taśmę przyklepną oraz sznur silikonowy zapewniający dobre połączenie obydwu profili. UWAGA! Profil KRAV-810 nie jest profilem konstrukcyjnym! Służy wyłącznie do podświetlania tafli ze szkła lub tworzywa. Montaż, mocowanie lub podwieszenie tafli należy dokonać przy użyciu standardowych mocowań dostępnych na rynku.

SIMPLE LED MOUNTING

The complete KRAV-810 extrusion is composed of two extrusions: one adapted for mounting LED strips and the second acting as a closing extrusion. Moreover, the extrusions are equipped with an adhesive mounting tape and a silicone cord ensuring good connection of both extrusions. NOTE! KRAV-810 extrusion is not a construction extrusion! It is used for illumination of glass or plastic panels. Assembly, mounting or suspension of the panel must be executed using standard fastening available on the market.

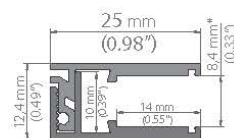
EINFACHE LED MONTAGE

Das komplette Profil KRAV-810 besteht aus zwei Profile: das eine, für Montage der LED Bänder geeignet ist und das zweite Schlussprofil. Darüber hinaus sind die Profile mit einem Klebeband und einer Silikonschnur ausgerüstet, der gute Verbindung von den beiden Profilen sicherstellt. ACHTUNG! Das Profil KRAV-810 ist kein Konstruktionsprofil. Es dient ausschließlich zur Beleuchtung der Flächen aus Glas oder Kunststoff. Die Montage, Befestigung oder das Aufhängen der Tafel mit den Standardbefestigungsstücken, die auf dem Markt erhältlich sind.

KRAV 810

Łatwy montaż diod Easy Installation of LEDs Einfache Installation von LEDs

117



KRAV 810 PROFIL

długość
length
Länge

szerokość paska LED
LED strip width
Breite LED Band

wykończenie powierzchni
surface finish
Oberfläche

numer artykułu
article number
Artikelnummer



1m (standard)
2m (standard)
3m *

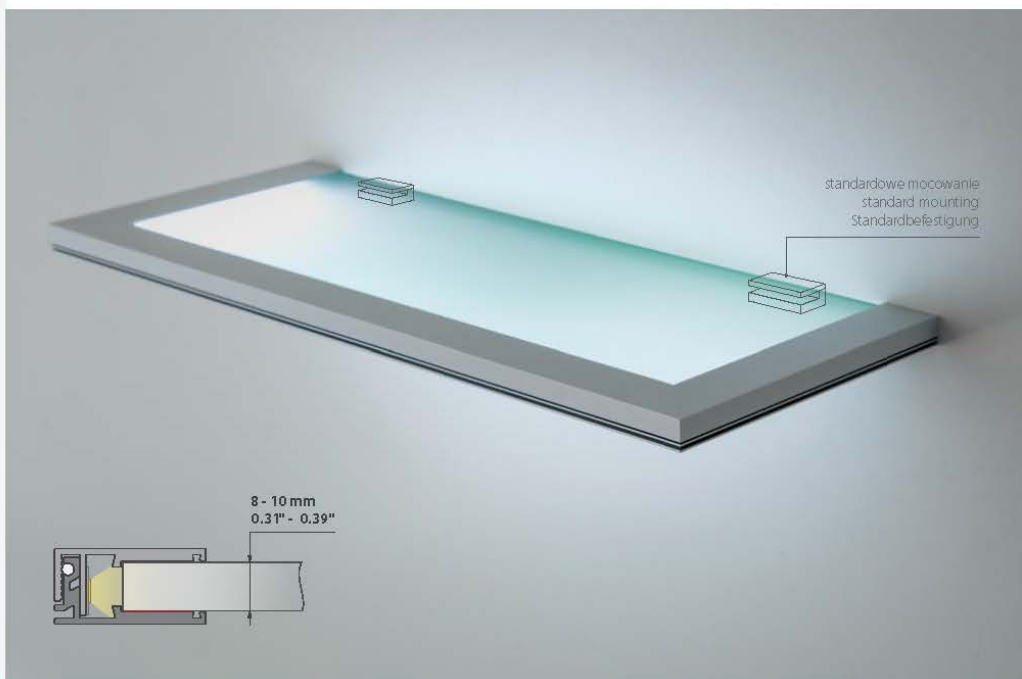
1 x LED strip
max. 10 mm

anodowany
anodized
eloxiert

18016

KRAV - ZAŚLEPKA / END CAP / ENDKAPPE

24028



* Dostępne po uzgodnieniu z działem handlowym / Available by arrangement with the sales department /
verfügbar nach Absprache mit dem Vertrieb .

KRAV-810



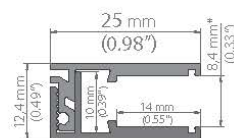
KRAV-810



KRAV 810

Łatwy montaż diod / Easy Installation of LEDs / Einfache Installation von LEDs

117



KRAV 810 PROFIL

długość
length
Länge

szerokość paska LED
LED strip width
Breite LED Band

wykończenie powierzchni
surface finish
Oberfläche

numer artykułu
article number
Artikelnummer



1m (standard)
2m (standard)
3m *

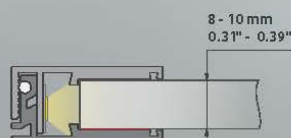
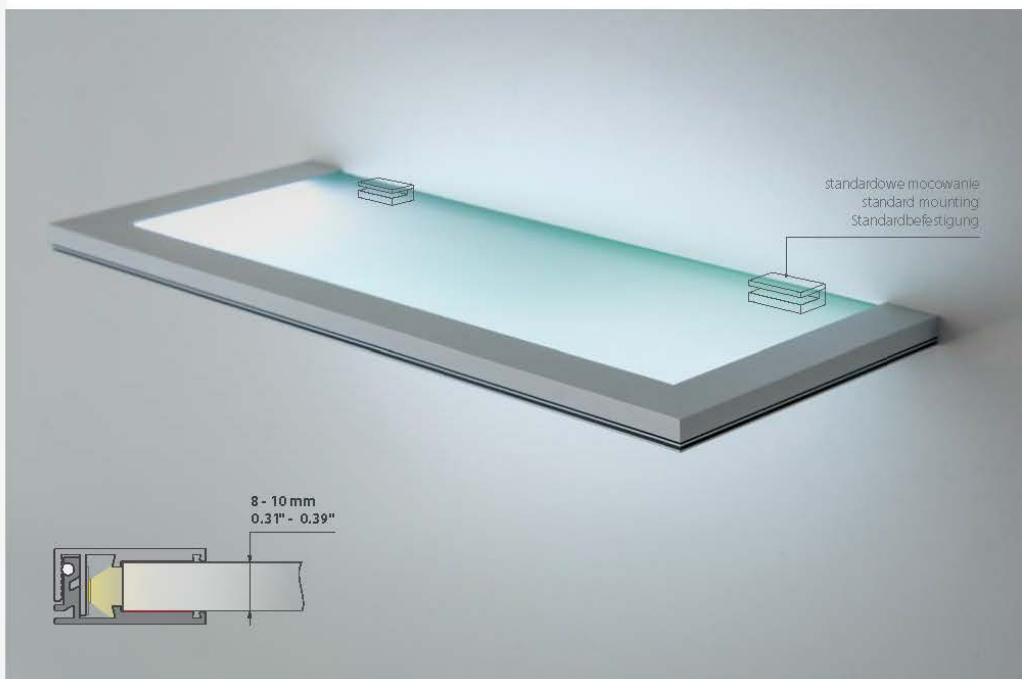
1 x LED strip
max. 10 mm

anodowany
anodized
eloxiert

18016

KRAV - ZAŚLEPKA / END CAP / ENDKAPPE

24028



* Dostępne po uzgodnieniu z działem handlowym / Available by arrangement with the sales department /
verfügbar nach Absprache mit dem Vertrieb .

