

Link to the product: <https://stair-lighting.com/profiel-led-foled-suf-p-2083.html>

Profiel LED FOLED-SUF

Price	16.01 Euro
Availability	Available
Shipping time	5 days
Number	2083
Manufacturer	KLUS

Product description

Important Information

The purchase a piece in the store means the purchase 1 linear meter of the profile or cover

If you want to buy a profile that has a length of 2 meters you have to buy 2 pieces, 3 meters you have to buy 3 pieces, and the multitude of quantity when ordering.

The total length of the aluminum profile or the panel to the profile - is the total quantity of the piece number that was bought in the store.

The choice of the appropriate shipping method will take place at the end of the order process.

[The details of the shipping method and packaging of the aluminum profiles you will find here \(click in the link\)](#)

Price for 1 meter length profile - no cover and end caps.

The product you have selected contains only - aluminum profile - does not include the accessories located in the Accessories tab.

Additional accessories like covers, end caps, electricity conductive end cap, mounting bracket, fasteners, mounting springs, proximity switch, micro switch, mounting system and others are available under "Accessories".

If you are interested in longer lengths than one meter, write to us we will quote the delivery cost to you. Transport companies expect additional charges for long shipments.

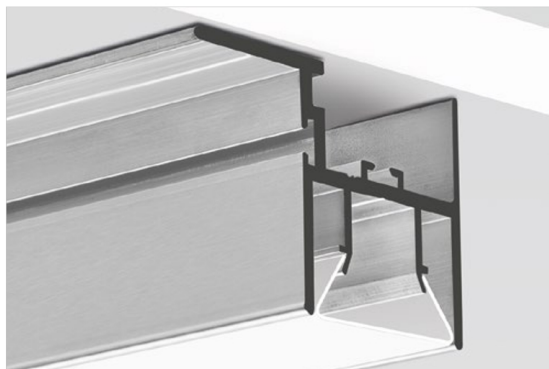
For each country is different maximum length of the profile that we can send. It does not depend on us only by courier.

We also do service cutting aluminum profiles to the indicated size - write or call get comprehensive information.

Profile do budowy sufitów w technologii napinanej folii /
Profile für Folienspanndecken

FOLED-SUF

REF. B8333V1



Łączy kilka funkcji: oprawy oświetleniowej,
stelażu dla sufitu napinanego.

Profil posiada kanał przystosowany do mocowania
standardowych harpunów stosowanych
w powierzchniach napinanych.

System FOLED otwiera nowe możliwości aranżacji wnętrz.

PRZEZNACZENIE PRODUKTU:

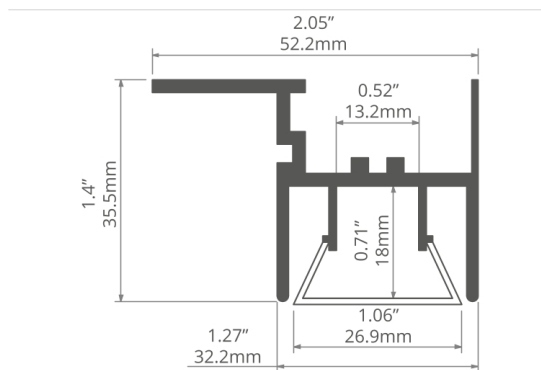
- do budowy sufitów w technologii „napinanej folii”
ze zintegrowanym oświetleniem LED. Stanowi obrzeże
foli estetycznie ją wykończając.

MONTAŻ:

- na powierzchniach (ścian, sufitów), za pomocą wkrętów
odpowiednio dobranych do rodzaju podłoża.

DODATKOWE INFORMACJE:

- przewidziany jest do zastosowań wewnętrznych,
- profile można łączyć pod każdym kątem większym niż 60 stopni,
- oprawa jest zlicowana z płaszczyzną folii,
- łatwe łączenie za pomocą „ŁĄCZNIKÓW ZM”,
- współpracuje z całą rodziną profili FOLED.



Verbindet mehrere Funktionen: Leuchte, Gerüst für
die Spanndecke.

Das Profil besitzt eine Rinne, wo Standardharpune,
die bei Spannflächen eingesetzt werden, befestigt
werden können.

System FOLED bietet neue Möglichkeiten der
Raumgestaltung.

ANWENDUNG

- zur Montage von Folienspanndecken mit integrierter
LED-Beleuchtung. Es bildet den ästhetischen Rand der Folie

MONTAGE

- auf Oberflächen (von Wänden, Decken), mit Schrauben angepasst
an den Untergrund

ZUSÄTZLICHE INFORMATIONEN

- für Innenanwendungen
- die Profile dürfen in einem Winkel von mehr als 60 Grad nicht
verbunden werden
- Leuchte bündig mit der Foliensoberfläche
- leichtes Verbinden mit „Verbindungsstücken ZM”
- kompatibel mit allen Profilen FOLED

profil / Profil

długość / Länge	szerokość LED / LED-Breite	wykończenie powierzchni / Oberfläche	numer artykułu / Artikelnummer
1 m	13 mm	Nieanodowany (surowe aluminium) / Nicht eloxiert (Aluminum Natur)	B8333V1NA_1
2 m			B8333V1NA_2
3 m			B8333V1NA_3

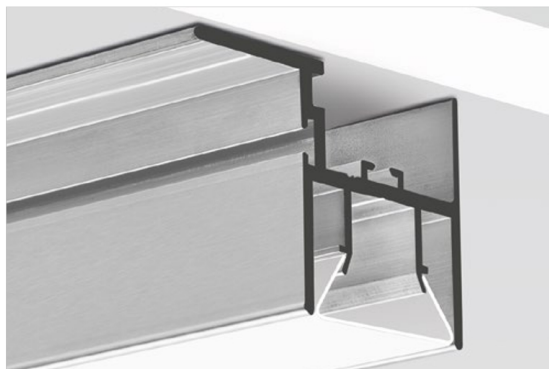
akcesoria / Zubehör

osłony mleczne / opale Abdeckungen	zaślepki białe / weiße Endkappen	łączniki / Verbindungsstücke	profil / Profil
FOLED 17077V1	FOLED-W 24277	ZM-NA-180 42724	FOLHAK B8338
osłony czarne / schwarze Abdeckungen	zaślepki czarne / schwarze Endkappen	ZM-NA-90 42723	FOLED B8332V1
FOLED 17045	FOLED-W 24285	ZM-NA-120 42729	FOLED-BOK B8334V1
		ZM-NA-135 42725	
		ZM-NA-PION-90 42726	
		ZM-NA-PION-135 42727	

Extrusions for building ceilings employing the stretch-film technology /
Perfiles para construir la tecnología de techos tensados

FOLED-SUF

REF. B8333V1



Combines several functions: lighting fixture, frame for a stretched ceiling.

The extrusion has a channel adapted to attach standard harpoons used in stretched surfaces.

The FOLED system opens new possibilities of interior design.

APPLICATION

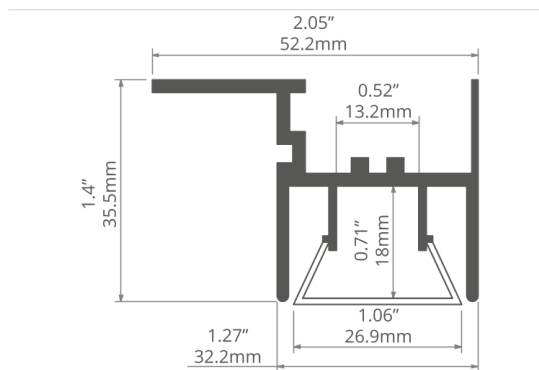
- for building ceilings employing the stretch-film technology with integrated LED lighting.
- forms the edge of the film and gives it a highly appealing finish.

ASSEMBLY

- on surfaces (walls, ceilings, etc.), by means of bolts appropriately selected for the type of the mounting surface.

ADDITIONAL INFORMATION

- intended for indoor use.
- extrusions can be connected with each other at an angle over 60°.
- fixture is flush with the plane of the film.
- easy connection using ZM connectors.
- compatible with the whole FOLED extrusion family.



Combina varias funciones: luminarios, marco para un techo estirado.

El perfil tiene un canal adaptado para unir arpones estándar utilizados en superficies estiradas.

El sistema FOLED abre nuevas posibilidades de diseño de interiores.

APLICACIÓN

- para la construcción de techos que emplean la tecnología techo tensado con iluminación LED integrada.
- forma el borde de estiramiento recubrimiento y le da un final altamente atractivo.

MONTAJE

- en superficies (paredes, techos, etc.), por medio de pernos seleccionados apropiadamente para el tipo de la superficie de montaje.

INFORMACIÓN ADICIONAL

- diseñado para uso en interiores.
- los perfiles se pueden conectar entre sí en un ángulo de más de 60°.
- luminaria está al ras con el plano de el recubrimiento.
- conexión fácil usando conectores ZM.
- compatible con toda la familia de perfiles FOLED.

extrusion / perfil

length / longitud	space for LED strip / espacio para tira de LED	surface finish / terminado de superficie	reference number / número de artículo
39.4" / 1 m	0.5" / 13 mm	Non anodized (raw) / Aluminio crudo (no anodizado)	B8333V1NA_1
78.7" / 2 m			B8333V1NA_2
118" / 3 m			B8333V1NA_3

accessories / accesorios

frosted covers / difusores escarchadas	white end caps / tapas finales blanco	connectors / conectores	extrusions / perfiles
FOLED 17077V1	FOLED-W 24277	ZM-NA-180 42724	FOLHAK B8338
black covers / difusores negro	black end caps / tapas finales negro	ZM-NA-90 42723	FOLED B8332V1
FOLED 17045	FOLED-W 24285	ZM-NA-120 42729	FOLED-BOK B8334V1
		ZM-NA-135 42725	
		ZM-NA-PION-90 42726	
		ZM-NA-PION-135 42727	

The FOLED SUF-v1 profile is a multifunctional product that can be used to build ceilings in "stretch film" technology with integrated LED lighting and for suspended ceilings. The profile aesthetically finishes the foil, forming its edge. It is a great option to introduce a style and a modern atmosphere to the interior.

Mounting method:

The FOLED SUF-v1 profile is assembled to surfaces such as walls or ceilings with screws appropriately matched to the ground.

Additional information:

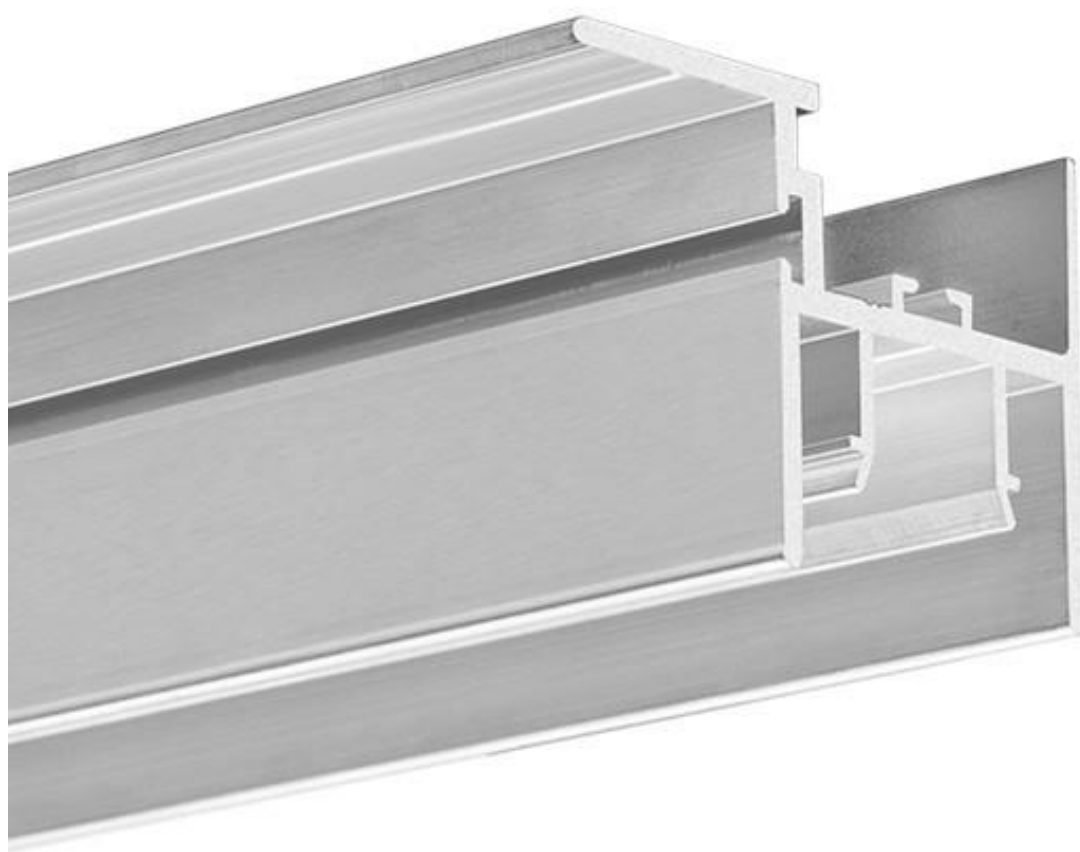
The profile is intended for internal use.

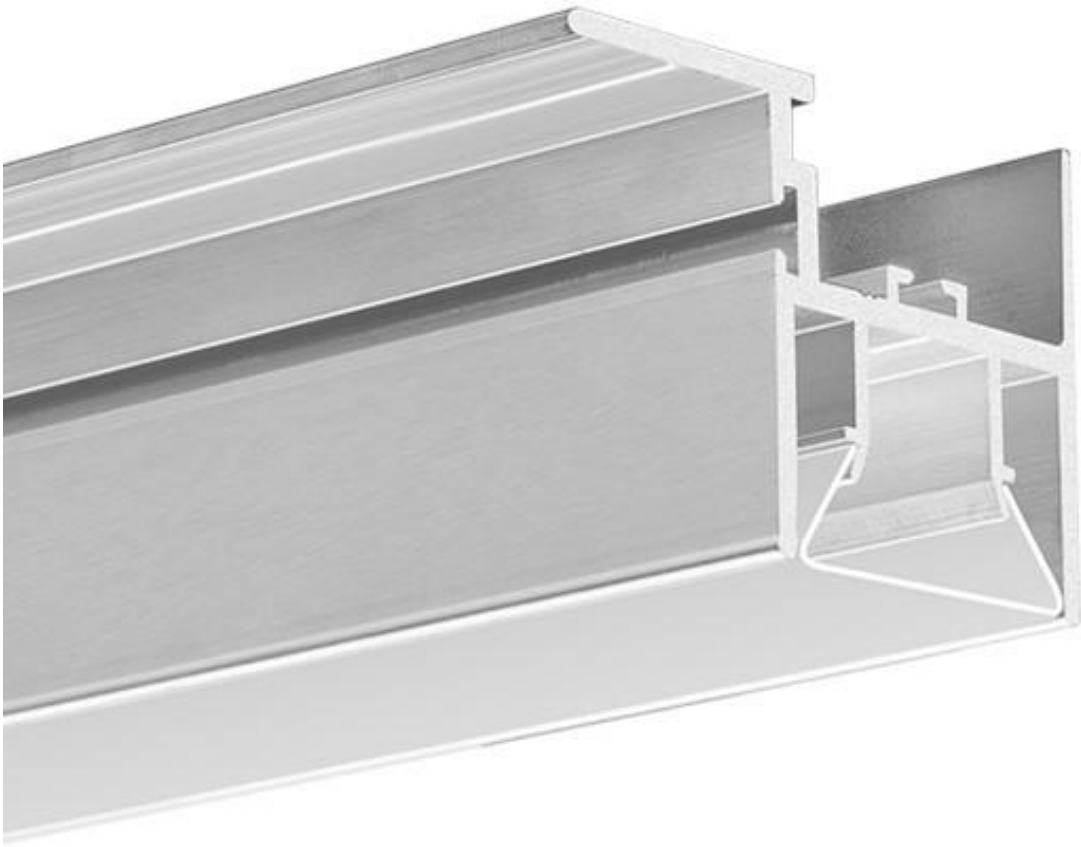
It can be combined at any angle higher than 60 degrees.

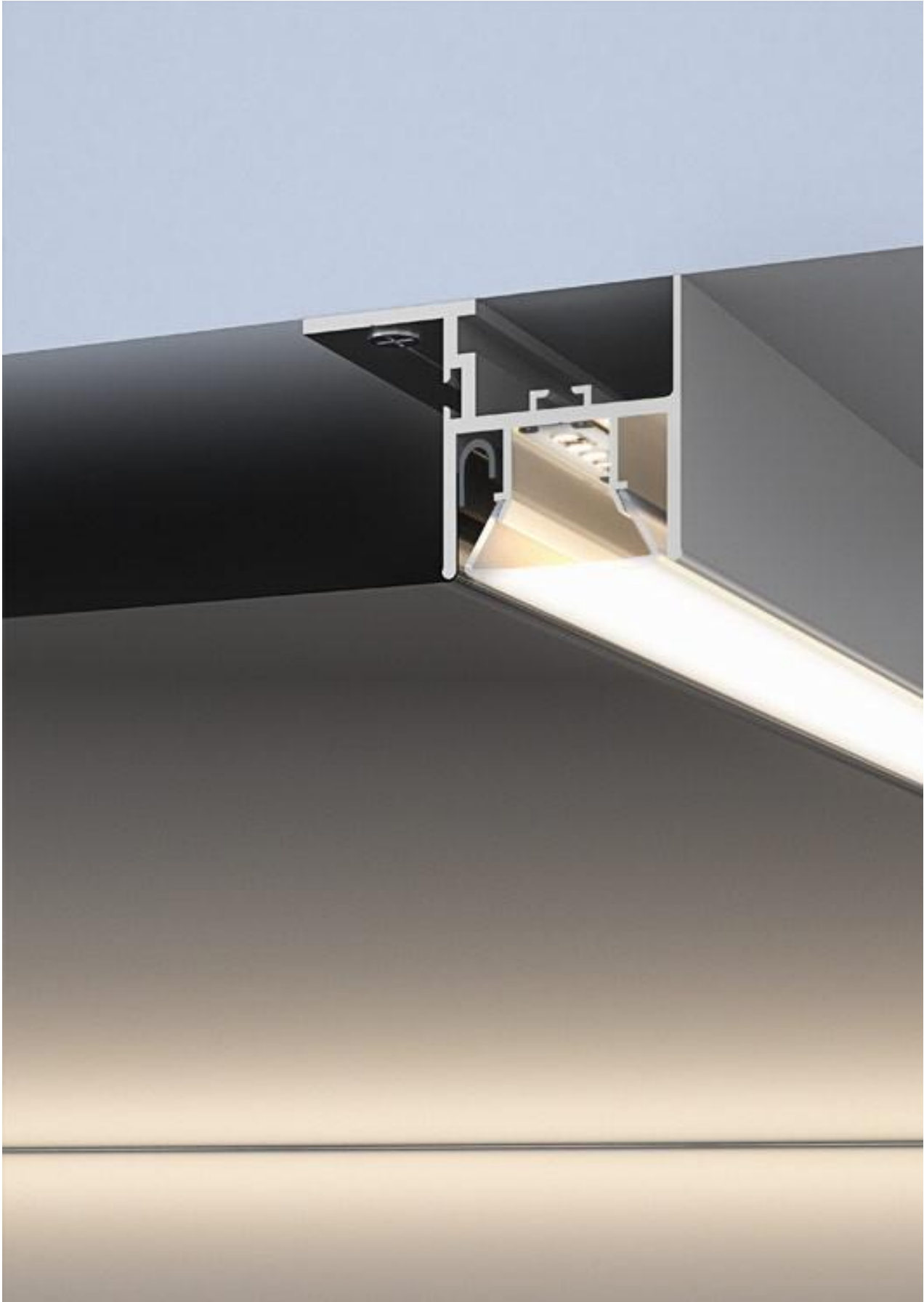
The profile holder is connected to the plane of the film

For fixing, we can use ZM connectors

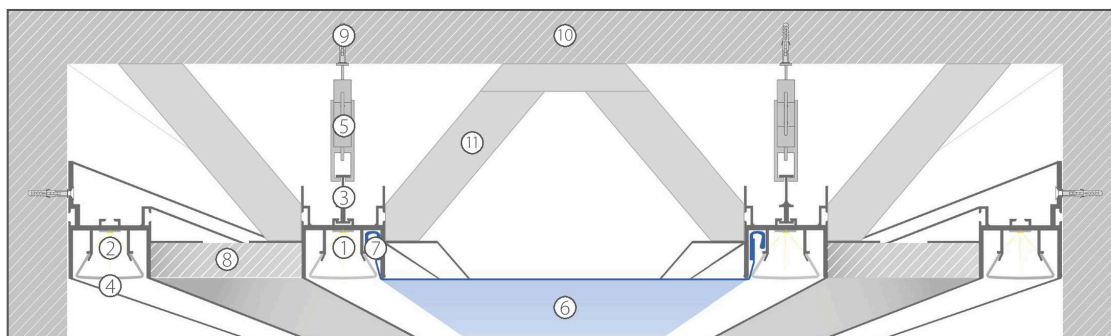
The profile is compatible with all products from the FOLED group





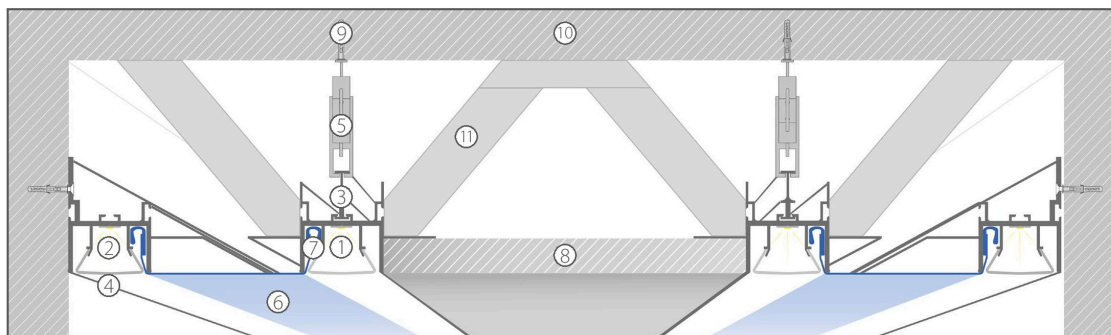


PRZYKŁADY MONTAŻU / MOUNTING EXAMPLES



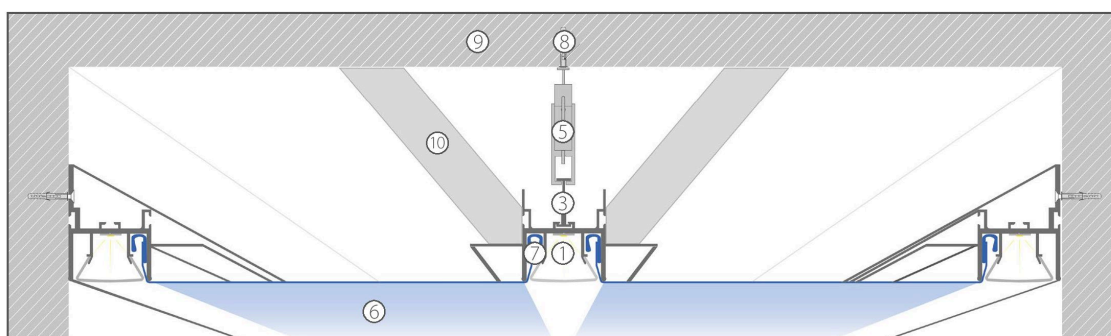
- ① FOLED
- ② FOLED-BOK
- ③ FOLHAK
- ④ osłona FOLED / cover FOLED
- ⑤ wieszak FOLED ze sprężyną / FOLED hanger with spring
- ⑥ folia sufitu napinanego / stretch ceiling foil

- ⑦ harpun sufitu napinanego / stretch ceiling hook
- ⑧ karton-gips / drywall
- ⑨ kołek do muru / wall plug
- ⑩ ściana / wall
- ⑪ wspornik / support



- ① FOLED
- ② FOLED-BOK
- ③ FOLHAK
- ④ osłona FOLED / cover FOLED
- ⑤ wieszak FOLED ze sprężyną / FOLED hanger with spring
- ⑥ folia sufitu napinanego / stretch ceiling foil

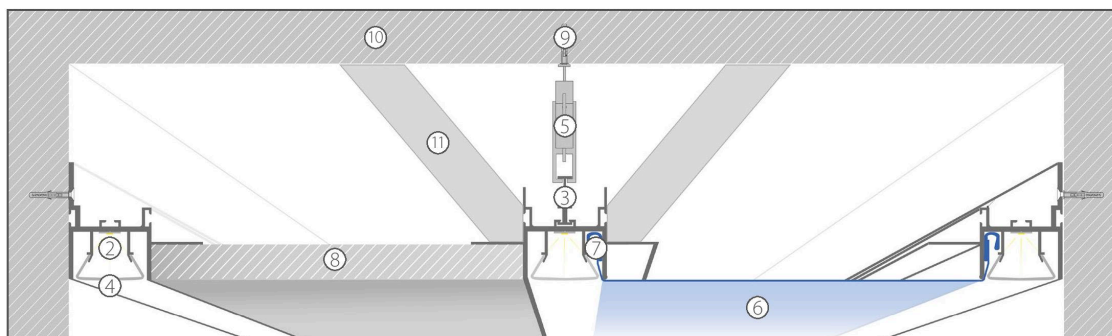
- ⑦ harpun sufitu napinanego / stretch ceiling hook
- ⑧ karton-gips / drywall
- ⑨ kołek do muru / wall plug
- ⑩ ściana / wall
- ⑪ wspornik / support



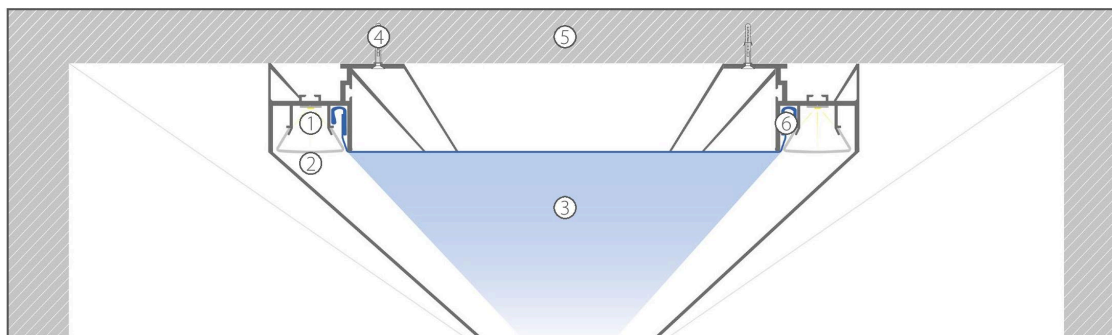
- ① FOLED
- ② FOLED-BOK
- ③ FOLHAK
- ④ osłona FOLED / cover FOLED
- ⑤ wieszak FOLED ze sprężyną / FOLED hanger with spring
- ⑥ folia sufitu napinanego / stretch ceiling foil

- ⑦ harpun sufitu napinanego / stretch ceiling hook
- ⑧ kołek do muru / wall plug
- ⑨ ściana / wall
- ⑩ wspornik / support

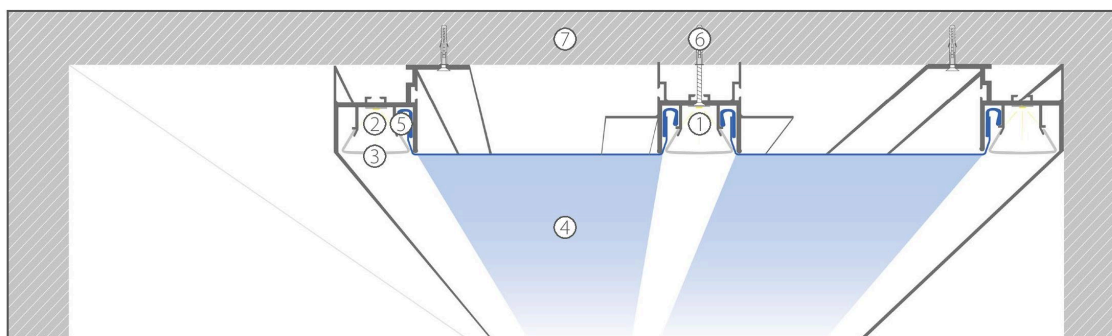
PRZYKŁADY MONTAŻU / MOUNTING EXAMPLES



- ① FOLED
- ② FOLED-BOK
- ③ FOLHAK
- ④ osłona FOLED / cover FOLED
- ⑤ wieszak FOLED ze sprężyną / FOLED hanger with spring
- ⑥ folia sufitu napinanego / stretch ceiling foil
- ⑦ harpun sufitu napinanego / stretch ceiling hook
- ⑧ karton-gips / drywall
- ⑨ kołek do muru / wall plug
- ⑩ ściana / wall
- ⑪ wspornik / support



- ① FOLED-SUF
- ② osłona FOLED / cover FOLED
- ③ folia sufitu napinanego / stretch ceiling foil
- ④ kołek do muru / wall plug
- ⑤ ściana / wall
- ⑥ harpun sufitu napinanego / stretch ceiling hook



- ① FOLED
- ② FOLED-SUF
- ③ osłona FOLED / cover FOLED
- ④ folia sufitu napinanego / stretch ceiling foil
- ⑤ harpun sufitu napinanego / stretch ceiling hook
- ⑥ kołek do muru / wall plug
- ⑦ ściana / wall

