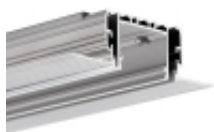


Link to the product: <https://stair-lighting.com/profiel-led-3035-koze-p-2514.html>



## Profiel LED 3035-KOZE

Price	<b>50.69 Euro</b>
Availability	<b>Available</b>
Shipping time	<b>5 days</b>
Number	<b>2514</b>
Manufacturer	<b>KLUS</b>

### Product description

#### Important Information

The purchase a piece in the store means the purchase 1 linear meter of the profile or cover

If you want to buy a profile that has a length of 2 meters you have to buy 2 pieces, 3 meters you have to buy 3 pieces, and the multitude of quantity when ordering.

The total length of the aluminum profile or the panel to the profile - is the total quantity of the piece number that was bought in the store.

The choice of the appropriate shipping method will take place at the end of the order process.

[The details of the shipping method and packaging of the aluminum profiles you will find here \(click in the link\)](#)

The product you have selected contains only - aluminum profile - does not include the accessories located in the Accessories tab.

Additional accessories like covers, end caps, electricity conductive end cap, mounting bracket, fasteners, mounting springs, proximity switch, micro switch, mounting system and others are available under "Accessories".

If you are interested in longer lengths than one meter, write to us we will quote the delivery cost to you. Transport companies expect additional charges for long shipments.

For each country is different maximum length of the profile that we can send. It does not depend on us only by courier. We also do service cutting aluminum profiles to the indicated size - write or call get comprehensive information.

**3035-KOZE =** 18056 (RAM-3035-KOZE) + B8441(3035-O)

#### Profile components:RAM-3035-KOZE

Name of the element	for length: 1 m	for length: 2 m	for length: 3 m
3035-KR-KOZE Profile	2 x 1 m	2 x 2 m	2 x 3 m
3035-MOS Profile	3 pcs.	5 pcs.	7 pcs.
KR Spring	6 pcs.	10 pcs.	14 pcs.

- The openwork structure of the mounting channel and its adjustable elements (bridges) allow placing power supplies and other electronic devices on any section of the LED lighting fixture, eliminating the need for unsightly inspection openings in the ceilings
- The lighting fixture can be removed and remounted without damaging the mounting surface
- The fixture can be mounted "from below" allowing to build ceiling lighting fixtures that run "wall to wall"
- Linear and polygonal connections are possible with ZM connectors
- Secure mounting resistant to vibration
- The profile fits into the thickness of two pieces of drywall

### **Application**

- for the construction of professional lighting fixtures with a cover mounted flush with the ceiling or wall surface
- for LED lighting fixtures recessed in the ceiling, installed and serviced as a system
- for creating precise mounting channels in drywall for LED lighting fixtures (RAM-3035-KOZE)

### **Assembly**

- embedding the "mounting channel" (RAM-3035-KOZE) in the surface of a drywall ceiling
- mounting the "core" of the lighting fixture (3035-O) in the "mounting channel" (RAM-3035-KOZE)

### **Additional information**

- 3035-KOZE fixtures are designed for 2 LED tapes (10 mm wide) or 2 LED tapes (8 mm wide)
- the profile fits in the thickness of two drywall panels
- the lighting fixture is designed so that the "core" of the lighting fixture (profile with LED tapes, power supply, wires and end caps) can be prepared in advance, in factory conditions.  
The only thing to be done at the installation site is to insert the prepared "core" (3035-O) into the pre-installed mounting channel (RAM-3035-KOZE)
- two locking bolts must be used for every 1m of lighting fixture. For lighting fixtures shorter than 1m, at least 2 bolts must be used
- the width of the gap in the drywall for (RAM-3035-KOZE): from 66 mm to 71 mm
- covers must be cut 2 mm shorter than the aluminum profiles on both ends (creating 2mm gaps on both ends of the lighting fixture)

Profile architektoniczne /  
Architekturprofile

## 3035-KOZE

REF. 18056 - RAM-3035-KOZE  
REF. 18063 - 3035-OMODO



Ażurowa konstrukcja kanału montażowego i jego przestawne elementy (mostki) umożliwiają umieszczanie zasilaczy i innych urządzeń elektronicznych w dowolnym odcinku oprawy LED, eliminując potrzebę stosowania nieestetycznych rewizji w sufitach.

Wielokrotny montaż i demontaż oprawy nie niszczy sufitu.

Montaż „od dołu” daje możliwość projektowania opraw w suficie „od ściany do ściany”.

Pewne, bezpieczne zamocowanie, odporne na drgania i wibracje

### PRZEZNACZENIE PRODUKTU:

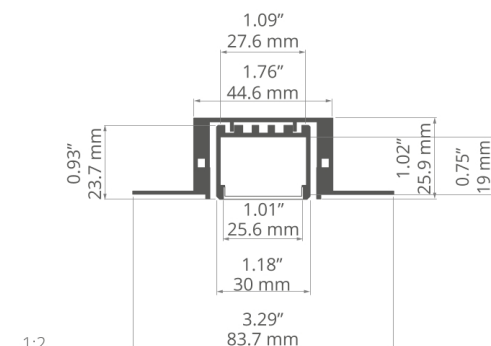
- do budowy profesjonalnych opraw o osłonie zlicowaną z płaszczyzną sufitu lub ściany,
- do tworzenia sufitowych, wbudowanych opraw LED, umożliwiających systemowy montaż i serwis.

### MONTAŻ:

- osadzenie „kanału montażowego” (RAM-3035-KOZE) w powierzchni sufitu z karton – gipsu. Montaż „rdzenia” oprawy (3035-OMODO) w „kanał montażowy” (RAM-3035-KOZE).

### DODATKOWE INFORMACJE:

- oprawa opracowana jest tak, że „rdzeń” oprawy (profil z taśmami LED, zasilaczem, przewodami i zaślepkami) w całości można przygotować wcześniej, w warunkach fabrycznych. W miejscu przeznaczenia montaż ogranicza się do wpięcia gotowego (uzbrojonego) „rdzenia” (3035-OMODO) we wcześniej zamontowany kanał montażowy (RAM-3035-KOZE).



1:2



Durch die durchbrochene Struktur des Montagekanals und seiner einstellbaren Elemente (Brücken) können Netzteile und andere elektronische Geräte in einem beliebigen Bereich der LED-Leuchte platziert werden, sodass keine unschönen Revisionsöffnungen in den Decken erforderlich sind.

Trotz wiederholter Montage und Demontage der Leuchte wird die Decke nicht beschädigt.

Die Montage "von unten" bietet die Möglichkeit, die Leuchten in der Decke "von Wand zu Wand" einzubauen.

Sichere und vibrationsfeste Befestigung.

### ANWENDUNG

- zum Bau von professionellen Leuchten mit der Abdeckung, bündig mit der Decken- oder Wandfläche
- für LED-Deckeneinbauleuchten, die als System installiert und gewartet werden können.

### MONTAGE

- Einbettung des "Montagekanals" (RAM-3035-KOZE) in der GK-Decke. Montage des "Kerns" der Leuchte (3035-OMODO) im "Montagekanal" (RAM-3035-KOZE).

### ZUSÄTZLICHE INFORMATIONEN

- die Leuchte ist so konzipiert, dass der "Kern" der Leuchte (Profil mit LED-Streifen, Netzteil, Leitungen und Endkappen) unter Werksbedingungen vorbereitet werden kann. Am Installationsort beschränkt sich die Montage darauf, den fertigen "Kern" (3035-OMODO) in den zuvor installierten Montagekanal (RAM-3035-KOZE) einzurasten.

### profil / Profil

długość / Länge	szerokość LED / LED-Breite	wykończenie powierzchni / Oberfläche	numer artykułu / Artikelnummer
1 m	20 mm	● Srebrny anodowany / Silber eloxiert	18056NA_1 - RAM-3035-KOZE
2 m			18056NA_2 - RAM-3035-KOZE
3 m			18056NA_3 - RAM-3035-KOZE
1 m		● Nieanodowany (surowe aluminium) / Nicht eloxiert (Aluminum Natur)	18063ANODA_1 - 3035-OMODO
2 m			18063ANODA_2 - 3035-OMODO
3 m			18063ANODA_3 - 3035-OMODO

## 3035-KOZE



### akcesoria / Zubehör

osłony mleczne / opale Abdeckungen	
3035	<b>17141</b>

zaślepki HQ / HQ Endkappen	
3035-O-HQ	<b>42635</b>

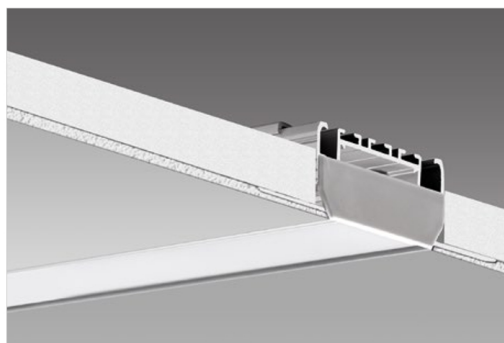
zaślepki szare / graue Endkappen	
3035-O	<b>24274</b>
RAM-3035-TEZE	<b>24349</b>

sprężyny mocujące / Befestigungsfedern	
KR	<b>42737</b>
RAM-1	<b>42738</b>

profil / Profil	
3035-KR-KOZE	<b>C1780</b>
3035-OMODO	<b>18063</b>
3035-MOS	<b>C1779</b>
RAM-3035-KOZE	<b>18056</b>

łączniki / Verbindungsstücke	
ZM-NA-180	<b>42724</b>
ZM-NA-90	<b>42723</b>
ZM-NA-135	<b>42725</b>
ZM-NA-PION-90	<b>42726</b>
ZM-NA-PION-135	<b>42727</b>

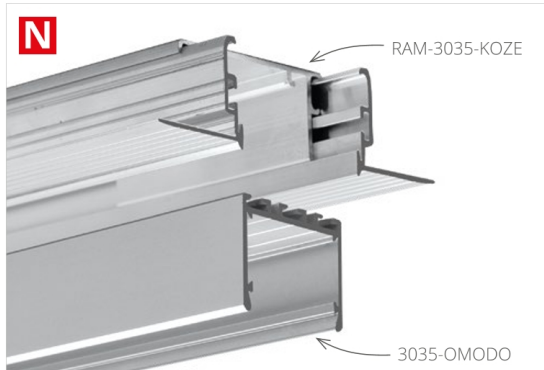
inne akcesoria / sonstiges Zubehör	
DŁAWNICA M8X1 / KABELVERSCHRAU- BUNG M8X1	<b>42265</b>
SZNUR SILIKONO- WY KR / SILIKON-SEIL KR	<b>24352</b>
KLIN / KEIL	<b>70397</b>



Architectural extrusions /  
Perfiles arquitectónicos

## 3035-KOZE

REF. 18056 - RAM-3035-KOZE  
REF. 18063 - 3035-OMODO



The openwork structure of the mounting channel and its adjustable elements (bridges) allow placing power supplies and other electronic devices in any section of the LED lighting fixture, eliminating the need for unsightly inspection openings in the ceilings.

The lighting fixture can be removed and remounted without damaging the ceiling.

The extrusion can be mounted "from below" and thus build ceiling lighting fixtures that run "wall to wall".

Secure mounting resistant to vibration.

### APPLICATION

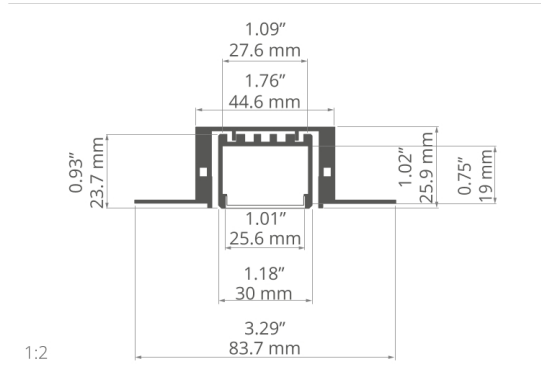
- for LED lighting fixtures recessed in the ceiling, installed and serviced as a system.
- for creating precise mounting channels in drywall for LED lighting fixtures.

### ASSEMBLY

- embedding the "mounting channel" (RAM-3035-KOZE) in the surface of a drywall ceiling. Mounting the "core" of the lighting fixture (3035-OMODO) in the "mounting channel" (RAM-3035-KOZE).

### ADDITIONAL INFORMATION

- the lighting fixture is designed so that the "core" of the lighting fixture (extrusion with LED tapes, power supply, wires and end caps) can be prepared in advance, in factory conditions. The only thing to be done at the installation site is to insert the prepared "core" (3035-OMODO) into the pre-installed mounting channel (RAM-3035-KOZE).



La estructura calada del canal de montaje y sus elementos desplazables (puentes) permiten colocar suministros de corriente y otros dispositivos electrónicos en cualquier sección de la luminaria LED, eliminando la necesidad de usar antiestéticas tapas de revisión entechos.

El montaje y desmontaje reiterado de la luminaria no daña el techo.

La cubierta empotrada elimina el efecto brillante. Permite el uso de cubiertas más eficientes y transparentes sin comprometer la estética de la iluminación (los puntos LED permanecen invisibles).

Se puede conectar fácil y rápidamente y quitarse de la superficie.

### APLICACIÓN

- para su uso en arquitectura de interiores y muebles
- para componentes de retroiluminación en los que la fuente de luz debe permanecer invisible.

### MONTAJE

- Instalación del "canal de montaje" (RAM-3035-KOZE) en la superficie del techo de pladur. Montaje del "núcleo" de la luminaria (3035-OMODO) en el "canal de montaje" (RAM-3035-KOZE).

### INFORMACIÓN ADICIONAL

- el accesorio de iluminación permite la iluminación sin colisiones de áreas en el apartamento y minimiza el deslumbramiento sin causar malestar. La fuente oculta de luz en el RAM-3035-KOZE juntas, especialmente.

### extrusion / perfil

length / longitud	space for LED strip / espacio para tira de LED	surface finish / terminado de superficie	reference number / número de artículo
39.4" / 1 m	0.78" / 20 mm	● Silver anodized / Ánodo de plata	18056NA_1 - RAM-3035-KOZE
78.7" / 2 m			18056NA_2 - RAM-3035-KOZE
118" / 3 m			18056NA_3 - RAM-3035-KOZE
39.4" / 1 m		● Non anodized (raw) / Aluminio crudo (no anodizado)	18063ANODA_1 - 3035-OMODO
78.7" / 2 m			18063ANODA_2 - 3035-OMODO
118" / 3 m			18063ANODA_3 - 3035-OMODO

## 3035-KOZE



### accessories / accesorios

frosted covers / difusores escarchada	HQ end caps / tapas finales HQ	grey end caps / tapas finales gris	connectors / conectores
3035 <b>17141</b>	3035-O-HQ <b>42635</b>	3035-O <b>24274</b>	ZM-NA-180 <b>42724</b>
		RAM-3035-TEZE <b>24349</b>	ZM-NA-90 <b>42723</b>
			ZM-NA-135 <b>42725</b>
		mounting springs / resortes de montaje	ZM-NA-PION-90 <b>42726</b>
		KR <b>42737</b>	ZM-NA-PION-135 <b>42727</b>
		RAM-1 <b>42738</b>	
		extrusions / perfiles	other accessories / otros accesorios
		3035-KR-KOZE <b>C1780</b>	GLAND / GLÁNDULA M8X1 <b>42265</b>
		3035-OMODO <b>18063</b>	SILICONE CORD KR / CABLE DE SILICONA <b>24352</b>
		3035-MOS <b>C1779</b>	WEDGE / CUÑA <b>70397</b>
		RAM-3035-KOZE <b>18056</b>	

