

Link to the product: <https://stair-lighting.com/p1-miboxer-led-dimmer-touch-panel-for-single-color-led-strips-p-1816.html>



## P1 Miboxer LED dimmer touch panel for single-color LED strips

Price	<b>25.61 Euro</b>
Previous price	<b>33.37 Euro</b>
Availability	<b>Available</b>
Shipping time	<b>4 days</b>
Number	<b>1816</b>
Manufacturer	<b>Mi.Light</b>

### Product description

Control Panel MILIGHT - Smart Panel Controller (Brightness) - P1 makes control settings intelligent lighting Milight becomes almost trivially easy. Equipped with a touch-screen device is a great option to create your own installation.

Pilot operates on the high-frequency 2.4 GHz. As a result, it has a very low level of power consumption. Handy touch screen using only one finger is capable of dealing with the control of all LED products in the range of 12 to 14 V.

The controller has a built-in 4 separate management zones. So you can in the framework plan as additional points of light. Pilot also acts as a dimmer. It allows for a comfortable fit light intensity to the circumstances. Additionally, you can change the color temperature. The light in the room very quickly to match the ambient conditions.

The control panel operates within a WiFi network. Its range is up to 30 meters. The product is characterized by sleek, modern, but also a minimalist design, so that it can successfully be used in any home.

Using intelligent remote controler MILIGHT - Smart Panel Controller (Brightness) - P1 is an excellent idea, which will significantly facilitate the daily use of modern LED lighting, regardless of the type of room. The product is inexpensive, made of durable materials, so that the characteristics of the pilot is consistent with the characteristics of the entire LED lighting.

Product Name: P1 Smart Panel Controller

Model No.: P1

Working Temperature: -20-60°C

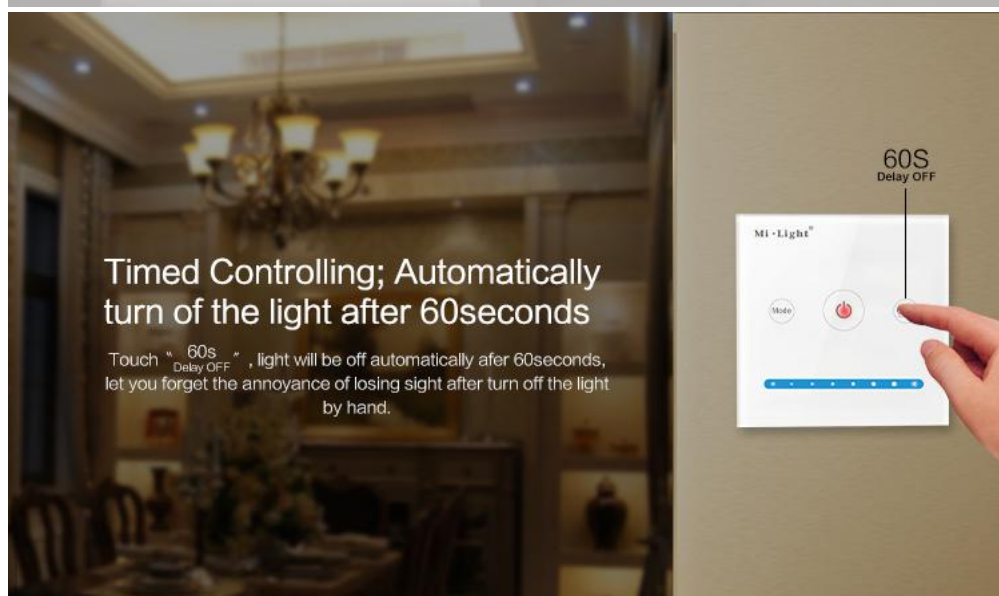
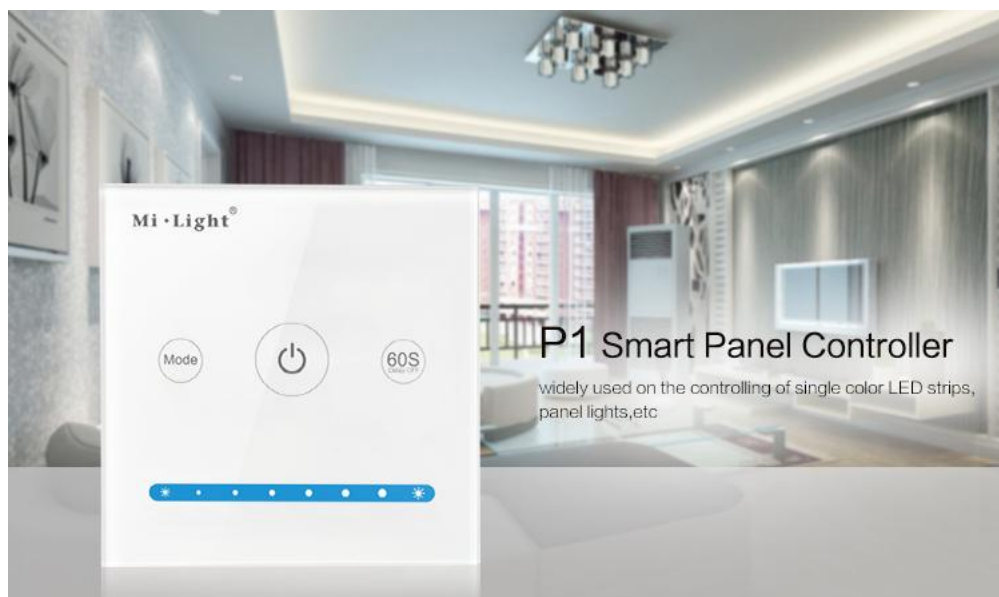
Working Voltage: DC12V-24V

Output Max: 5A/Channel

Total Output Max: 15A

Output Connection: Common anode

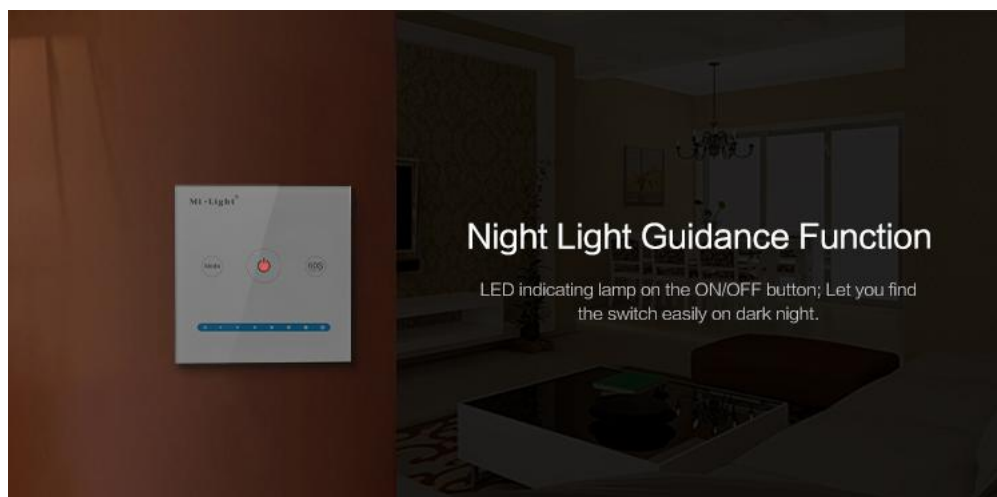
Panel Size: 86\*86mm



## 0.1%~100% brightness dimming

Pursue the quality; Brightness dimming(0.1%~100%);  
let the user get the brightness randomly.





Capacitive touch screen

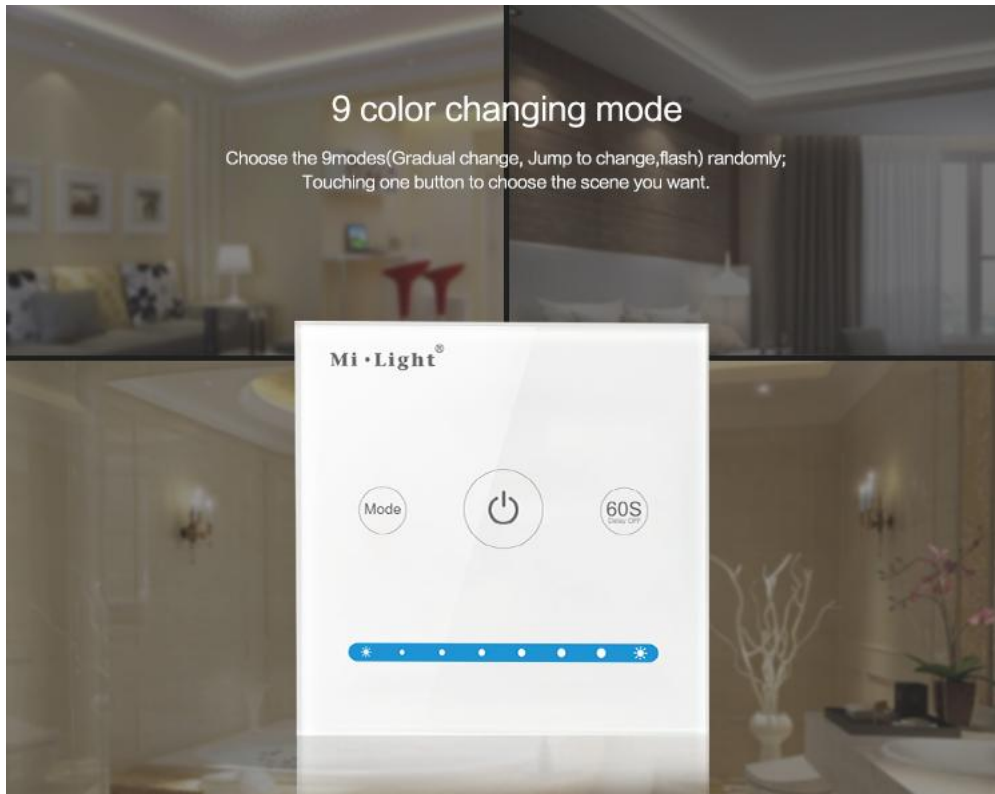
Stable touch screen

high precision Capacitive touch screen IC, touching screen is very sensitive.



## 9 color changing mode

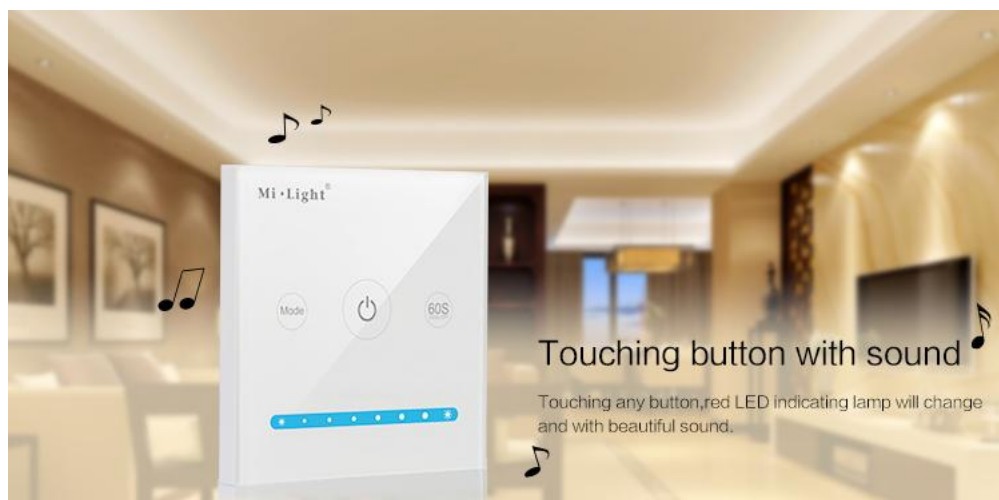
Choose the 9 modes (Gradual change, Jump to change, flash) randomly;  
Touching one button to choose the scene you want.



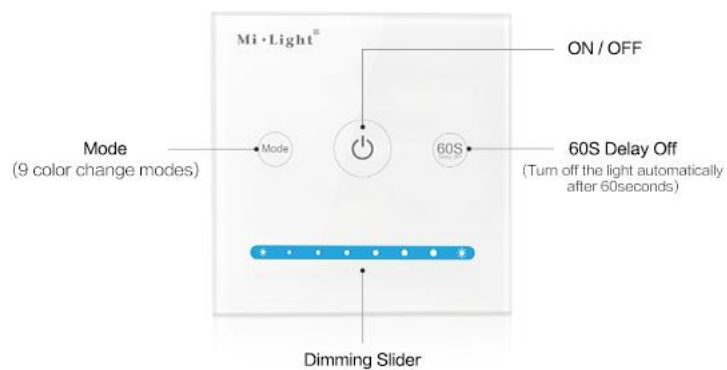
## High-end safe glass panel Scratch resistance

Adopt the high-end and elegant glass panel with good  
crushing and scratching resistance.

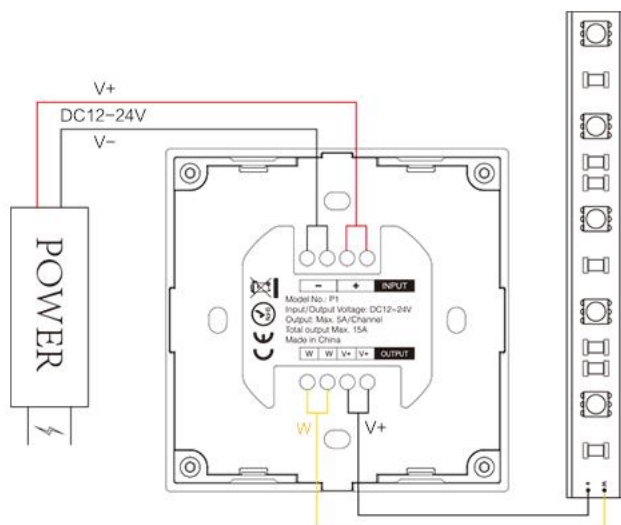




## Functional Diagram



## Diagram of connecting to LED strip

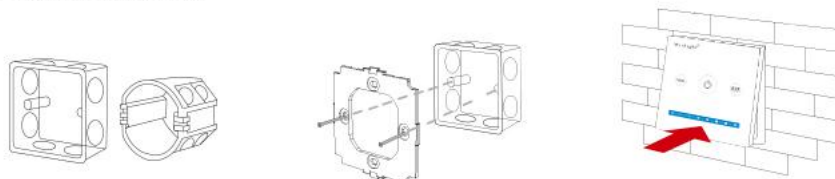


### Attention:

1. Please check whether the input voltage of the constant voltage power supply is in accordance with the controller, and please check the connection of both the cathode and anode.
2. The working Voltage is DC12-24V, the controller will be broken if the voltage is higher than 12-24V.
3. When Installation, pls handle with care to avoid the broken of the glass panel.

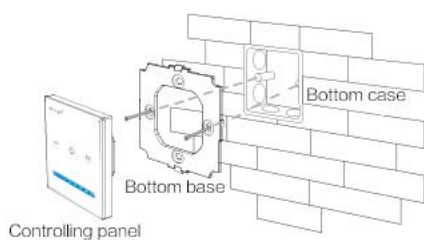
## Installation / Dismantlement

### Method of installation

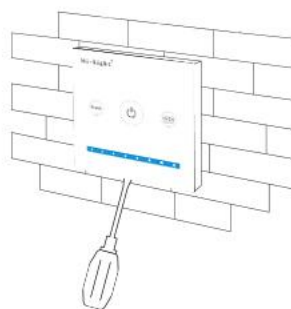


1. Install the bottom case into the wall;  
Above are the standard bottom cases.
2. Fix the controller base on the  
bottom case with screw.
3. Clicks into the upper side of glass panel  
on the controller base, then press the  
lower side slightly to make it clicks into  
the controller base.

### Installation Overview



### Method of dismantlement



Plug into the below bayonet with a screwdriver,  
and upwarp screwdriver, then you can dismantle  
the controller.

