

Link to the product: <https://stair-lighting.com/led-gypsum-downlight-round-fixed-vela-p-2145.html>

LED gypsum downlight round fixed - VELA

Price	18.32 Euro
Availability	Availability - 3 days
Shipping time	3 days
Number	2145
Manufacturer	Ledline

Product description

White color

Gypsum material ::

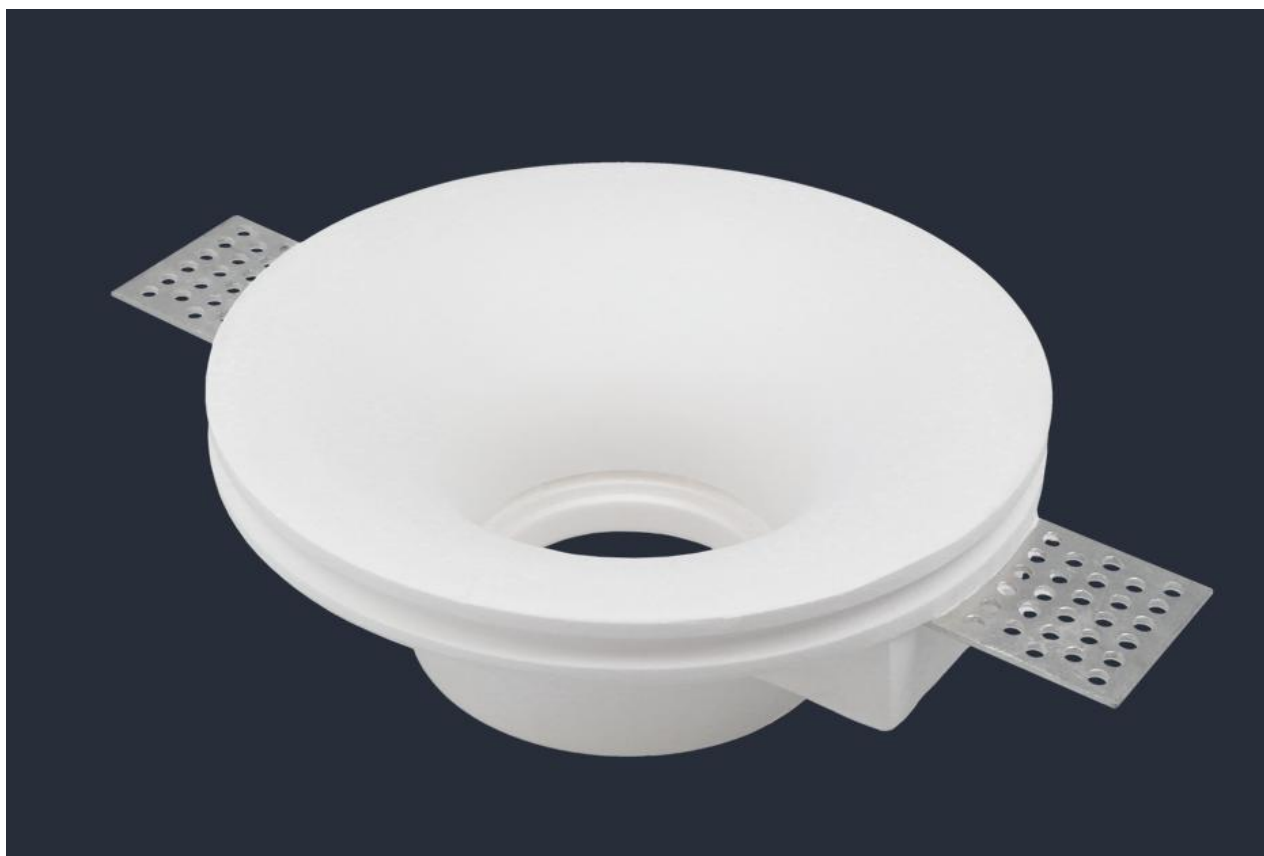
Use with bulbs with maximum power: max. 1x35W

Dimensions :: 130 x 50 mm

Diameter of mounting hole :: 100 mm

Adjustment has ::

Weight :: 584g



How to mount gypsum downlight?

1. Mark out the position of the lamp.



2. Drill holes.



3. Cut out the hole in the ceiling.



4. Clean the edges of the holes.



5. Mark the area where to drill a hole.



6. Tighten the screws in the designated place.



7. Apply a layer of finish coat (see the manufacturer's instructions for drying time)



8. Grind the surface.



9. Apply the undercoat (primer) and then, apply paint.



10. Connect the lamp to a source of power.



11. Fasten the retaining ring.



