

Link to the product: <https://stair-lighting.com/2-line-rgbw-rail-tracklight-wi-fi-25w-futw01-p-1702.html>



## 2-line RGBW Rail Tracklight Wi-Fi 25W - FUTW01

Price	<b>75.86 Euro</b>
Availability	<b>Goods are unavailable</b>
Shipping time	<b>4 days</b>
Number	<b>1702</b>
Manufacturer	<b>Mi.Light</b>

### Product description

Multifunctional device acting as a controller, it allows you to control lighting via Wi-Fi in your home using devices operating on Android or IOS.

Router MI LIGHT allows you to connect to your home network so you do not need anymore to switch between wireless networks. MILIGHT Router also enables you to control light, even when you're away from home.

Wi-Fi router can be used to support all devices 2.4G smart lighting: incandescent RGB, RGBW, dimmable lighting etc. This simple device you can control your lighting using a smartphone based on iOS or Android, a new free application available on the AppStore or Google Play (MI.LIGHT).

Power: 25W

Voltage: AC86-265V / 50-60Hz

Kelvin: WW(2700-3200K) / CW(6000-6500K)

Luminous Flux: 2000LM

Luminous Efficiency: 83LM/W

CRI: >80

Wire Type 2 wires

Rotating Angle Horizontal 350° & Vertical 350°

Beam Angle: 30°

PF: >0.92

Material: Aluminum+Transparent lens

Control Distance: 30m

Application Areas: KTVs, Bars, galleries, shopping mall

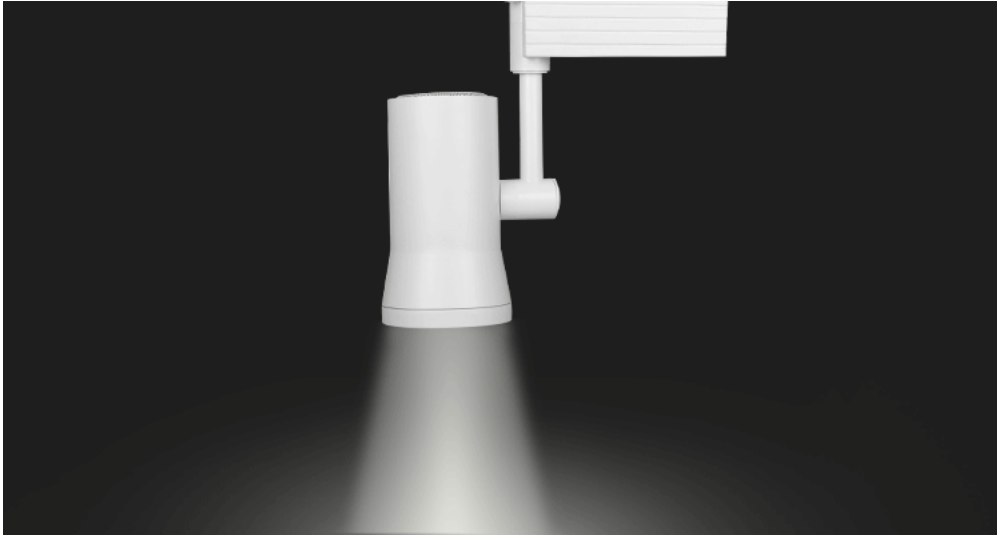
MILIGHT bulbs and fittings that light points can perform a variety of functions, including the main form interior lighting and decorations. Manufacturer deliberately created his light source so that you can use widely available in the lamps holes for screwing light bulbs - their handles are made in the most popular sizes.

Similarly constructed is called. and the English language downlight luminaire that is intended to be built. Its diameter is 12cm assembly so that fits most ceilings and fit in lighting furniture, wall cavities etc. It is not the foreign applicable also on industrial scale, or commercially in modern recesses restaurant or bar. It lights up the space in one direction, but with a large diffusion of light.

It has a built-in LED RGBW, which means that it can be lit at any one of several million colors in the most severe scenario. There is also an option for lovers of classic monochrome, which is a variant of hot or cold white.

For Milight lamps may be grouped and it does not matter the number in the group. Assigns them to the controller using the remote control, just remove it. Group may be all the points the light in the room, only light at their desk, or just hanging lamp - there is full freedom.

As with all LED light points created within the brand Milight, its durability is estimated at 50 thousand. burning hours, which in practice gives even 25 years of a fully satisfactory environmental lighting product.





## Details

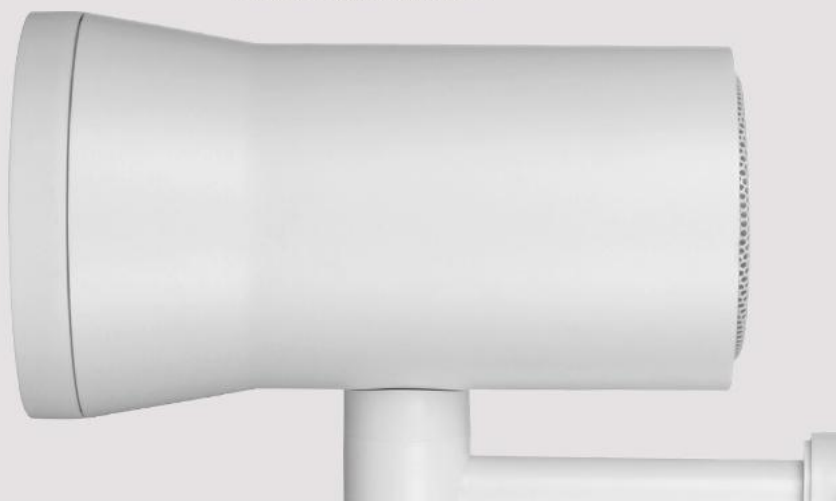
### Lens

Acrylic lens, high transmittance & even lighting, perfect lighting effect



## Lamp Body

High quality intergraded aluminum body, making  
high-efficient heat sink performance.

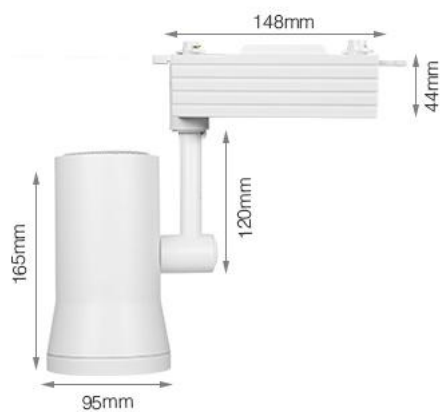


## Tail grid design

Unique grid design, make whole  
body the design feels stronger









This product has additional options:

**Light color - MILIGHT:** RGB + WW , RGB + CW